

# Unicentric comparative analysis with propensity score matching: direct SADI-S Versus two-step procedure



C. Lazzara



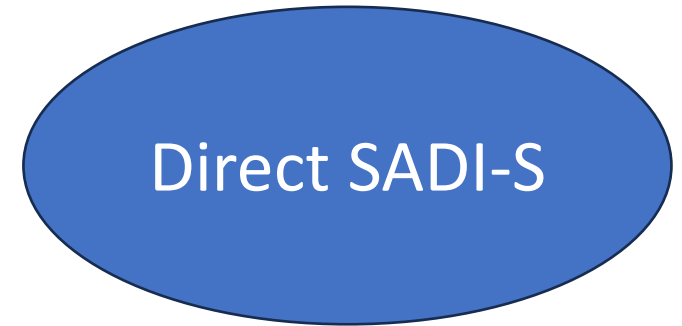
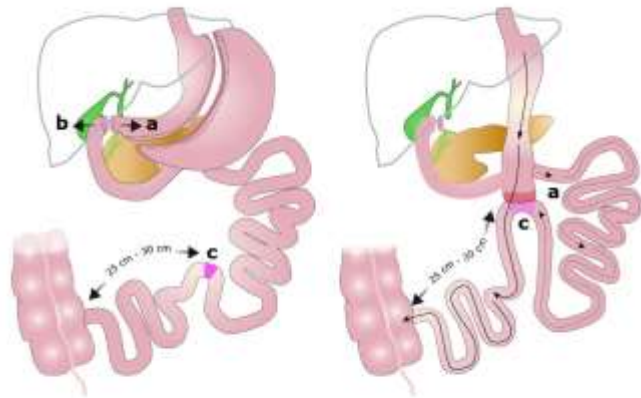
NAPOLI  
2023



> Obes Surg. 2007 Dec;17(12):1614-8. doi: 10.1007/s11695-007-9287-8. Epub 2007 Nov 27.

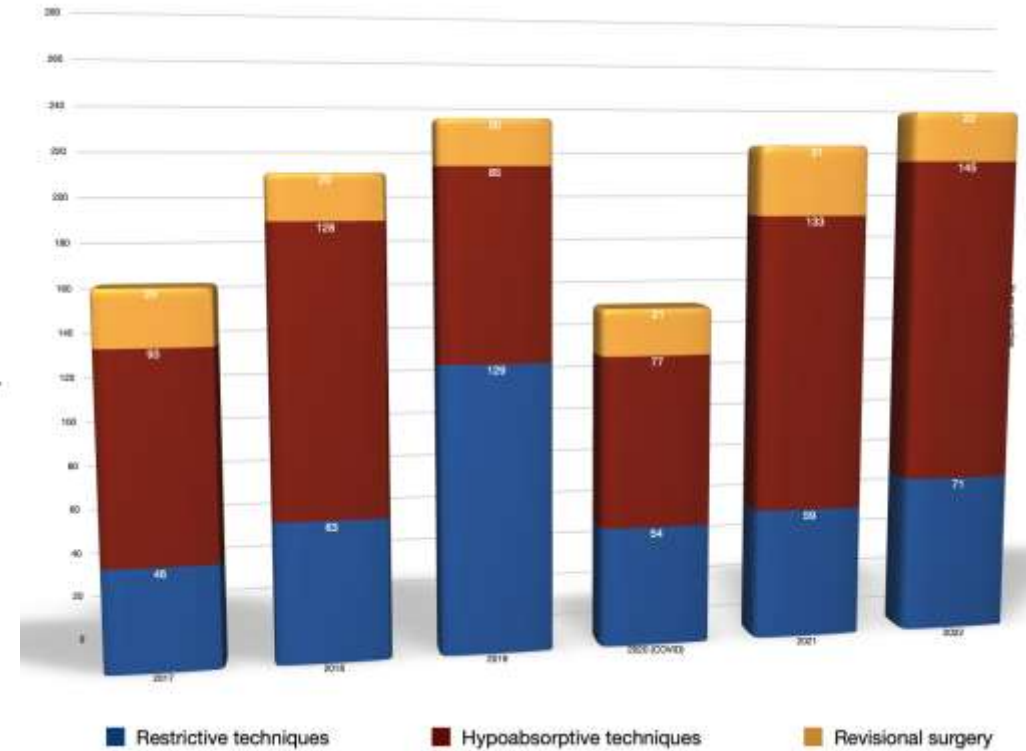
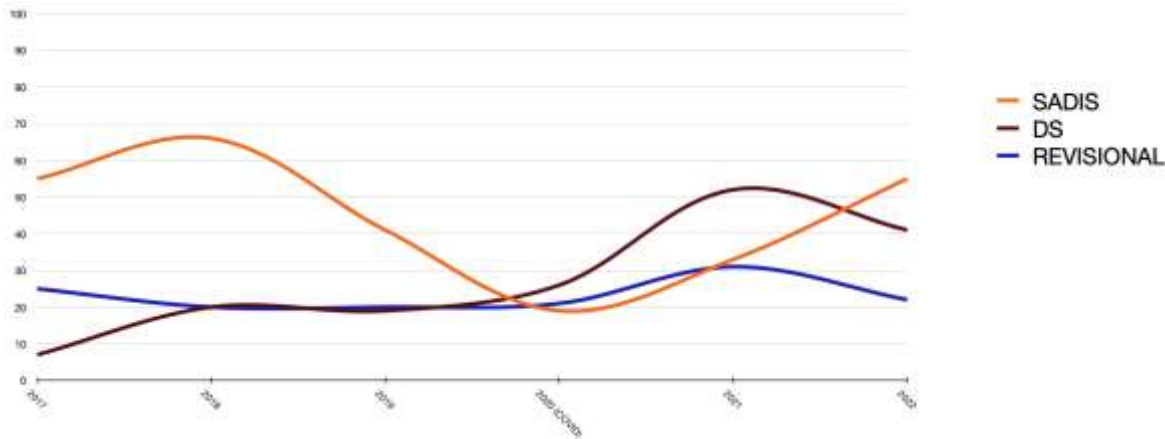
## Proximal duodenal-ileal end-to-side bypass with sleeve gastrectomy: proposed technique

Andrés Sánchez-Pernaute <sup>1</sup>, Miguel Angel Rubio Herrera, Elia Pérez-Aguirre, Juan Carlos García Pérez, Lucio Cabrerizo, Luis Díez Valladares, Cristina Fernández, Pablo Talavera, Antonio Torres



## Actividad HUB 2017-2022

	2017	2018	2019	2020 (COVID)	2021	2022	TOT
CLIP		1	7	24	13		
GV		46	56	95	38	59	71
BPG		31	42	25	32	37	35
OAGB						11	14
<b>SADIS</b>		55	66	41	19	33	55
DS		7	20	19	26	52	41
REVISIONAL		25	20	20	21	31	22
VEST				10	3		
<b>TOT</b>		165	211	234	152	223	238







## Single Versus Double-Anastomosis Duodenal Switch: Single-Site Comparative Cohort Study in 440 Consecutive Patients

Pablo Finno<sup>1</sup> · Javier Osorio<sup>1</sup> · Amador García-Ruiz-de-Gordejuela<sup>1</sup> · Anna Casajoana<sup>1</sup> · María Sorribas<sup>1</sup> · Víctor Admella<sup>1</sup> · Mónica Serrano<sup>1</sup> · Joao Batista Marchesini<sup>2</sup> · Almino C. Ramos<sup>3</sup> · Jordi Pujol-Gebelli<sup>1</sup>

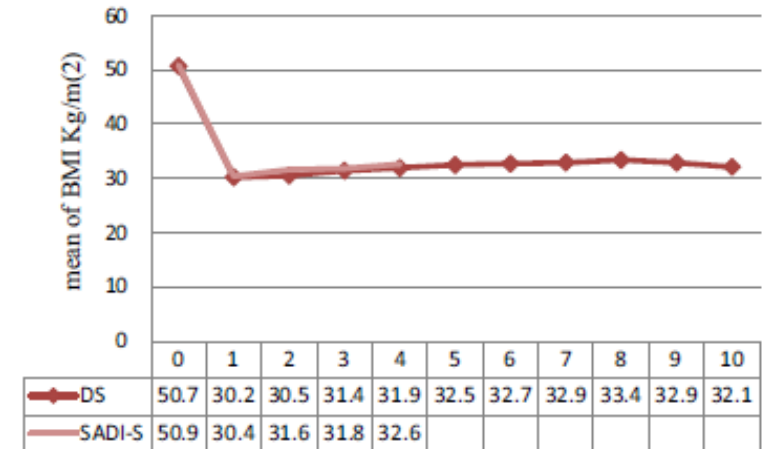
**Table 2** Anthropometric and comorbidity diseases changes stratified by initial BMI and after DS and SADI-S at 2 years

	DS group			SADI-S group		
	n = 133	n = 72	n = 54	n = 91	n = 53	n = 37
Initial BMI, Kg/m <sup>2</sup>	< 50	≥ 50–54.9	≥ 55	< 50	≥ 50–54.9	≥ 55
At 2 years						
%TWL, mean (SD)	34.7 (8.3)	51.7 (9.5)	47.2 (8.4)	33.7 (9.2)	39.7 (8.3)	42.7 (8.7)
%EWL, mean (SD)	76.6 (17.9)	79.6 (17.9)	80.7 (12)	73.8 (18.8)	76.5 (15.7)	74.2 (15.6)
BMI, Kg/m <sup>2</sup> , mean (SD)	30 (3.7)	30.6 (4.8)	31.6 (5)	30.6 (4.2)	31.3 (4.3)	33.9 (5.6)
BMI < 35Kg/m <sup>2</sup> , n (%)	95 (92.2)	41 (83.7)	32 (80)*	30 (90.9)	15 (78.9)	8 (50)*
Comorbidities n (%)						
T2D remission	44 (80)	19 (86.4)	14 (100)*	35 (83.3)	13 (100)	6 (75)*
HTN remission	47 (56.6)	24 (72.7)	16 (69.9)	34 (61.8)	19 (73.1)	11 (68.8)
DLP remission	39 (81.2)	16 (84.2)	5 (62.5)	20 (71.4)	10 (83.3)	5 (62.5)
OSA remission	58 (80.6)	38 (84.4)	25 (86.2)	29 (85.3)	21 (84)	16 (88.9)

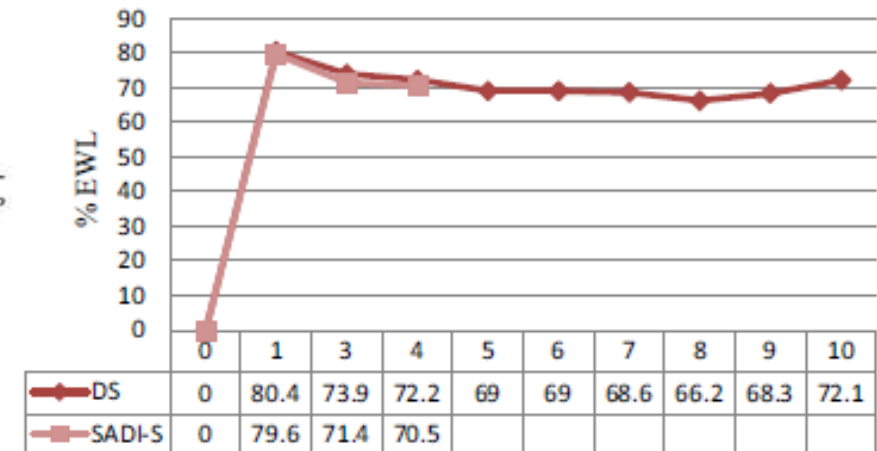
DS duodenal switch, SADI-S single anastomosis duodeno-ileal with sleeve, BMI body mass index, T2D type 2 diabetes, HTN hypertension, DLP dyslipidemia, OSA obstructive sleep apnea

\*p < 0.05; \*\*p < 0.001

### BMI changes



### % EWL changes





# Revisional Laparoscopic SADI-S vs. Duodenal Switch Following Failed Primary Sleeve Gastrectomy: a Single-Center Comparison of 101 Consecutive Cases

Javier Osorio<sup>1</sup> · Claudio Lazzara<sup>1</sup> · Victor Admella<sup>1</sup> · Sofia Franci-León<sup>1</sup> · Jordi Pujol-Gebelli<sup>1</sup>

Received: 7 April 2021 / Revised: 27 April 2021 / Accepted: 5 May 2021  
 © The Author(s), under exclusive licence to Springer Science+Business Media, LLC, part of Springer Nature 2021

Figure 1: Total weight loss evolution

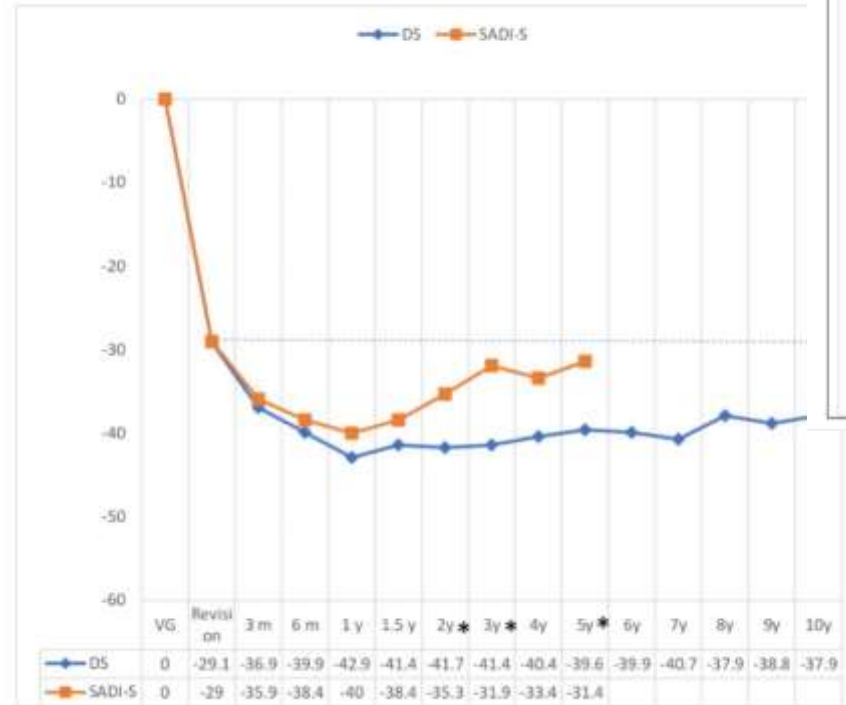
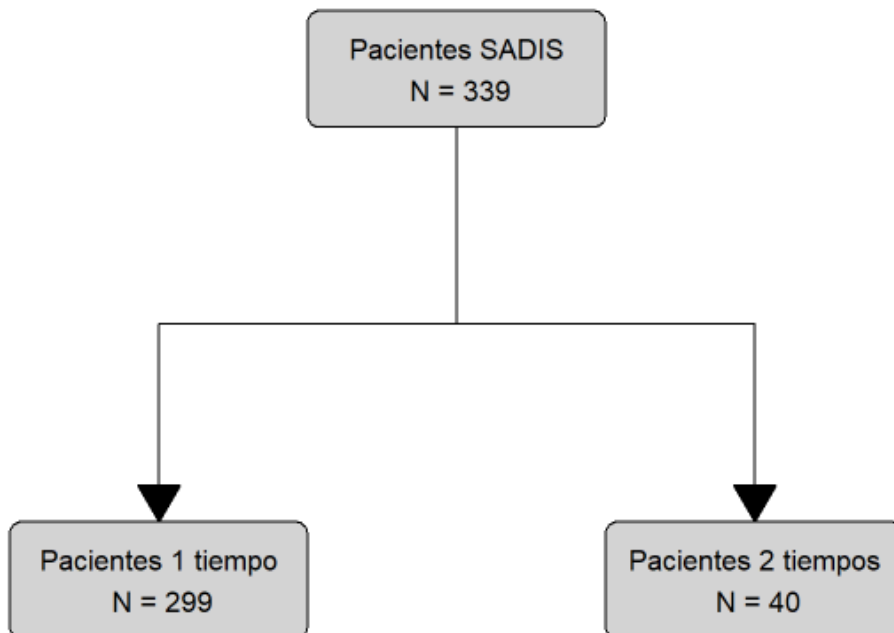
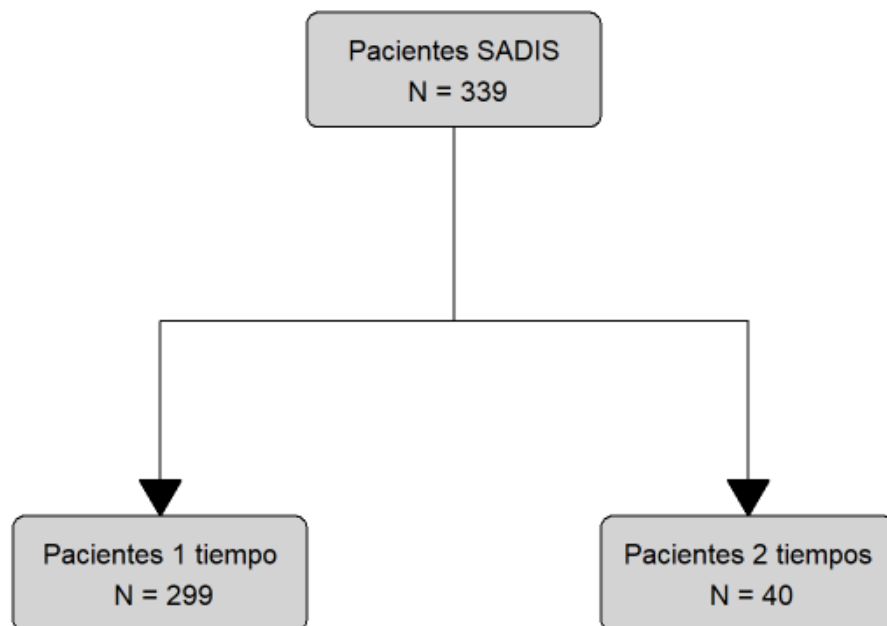


Figure 2: Excess Weight Loss evolution

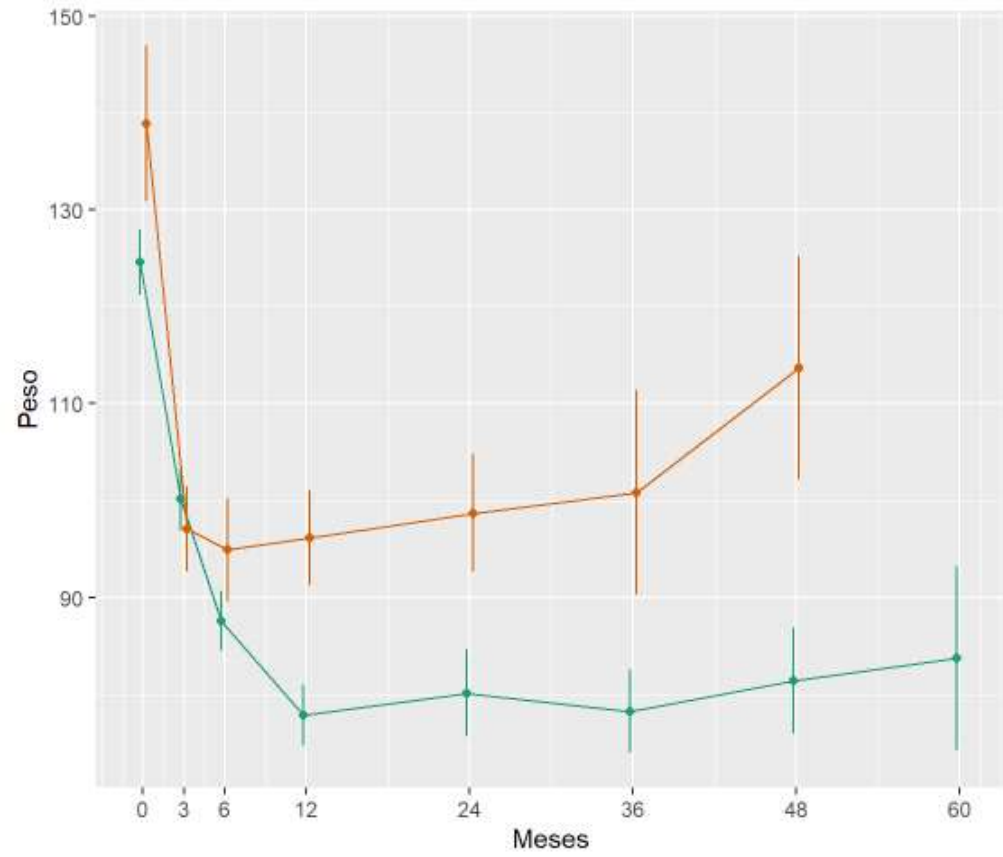




	1 tiempo N=297	2 tiempos N=40	p.overall
Sexo, N (%):			0.647
Hombre	82 (27.6%)	13 (32.5%)	
Mujer	215 (72.4%)	27 (67.5%)	
Edad, Media (desviación estándar)	51.2 (8.54)	42.6 (10.7)	<0.001
Edad, Mediana [Q1;Q3]	53.0 [46.0;58.0]	42.0 [34.8;51.0]	<0.001
IMC máximo, Media (desviación estándar)	50.1 (5.01)	55.7 (7.74)	<0.001
IMC máximo, Mediana [Q1;Q3]	50.1 [46.8;53.3]	57.6 [48.1;62.4]	<0.001
IMC máximo, N (%):			<0.001
< 50	144 (48.6%)	12 (33.3%)	
50 - 55	108 (36.5%)	4 (11.1%)	
> 55	44 (14.9%)	20 (55.6%)	
DM, N (%):			0.934
No	194 (65.3%)	24 (63.2%)	
Sí	103 (34.7%)	14 (36.8%)	
HTA, N (%):			0.159
No	124 (41.8%)	21 (55.3%)	
Sí	173 (58.2%)	17 (44.7%)	
Dislipemia, N (%):			0.155
No	196 (66.0%)	30 (78.9%)	
Sí	101 (34.0%)	8 (21.1%)	
SAOS, N (%):			0.081
No	158 (53.4%)	14 (36.8%)	
Sí	138 (46.6%)	24 (63.2%)	



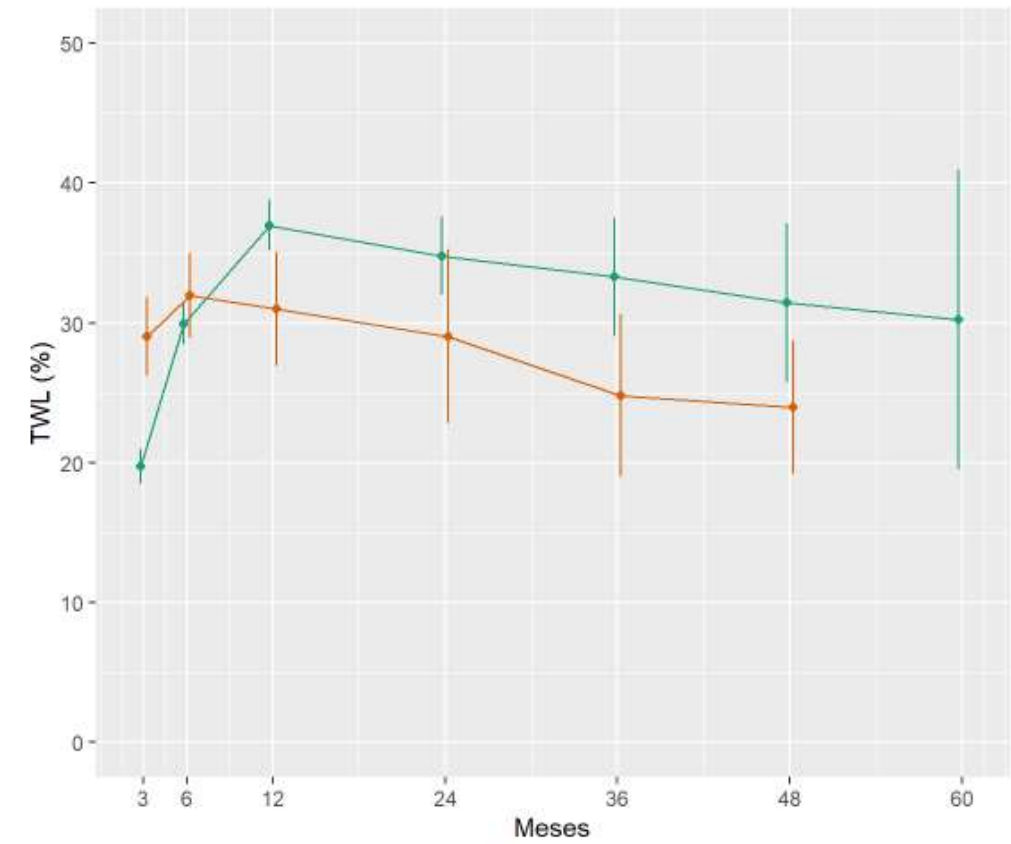
	1 tiempo N=108	2 tiempos N=36
Sexo, N (%):		
Hombre	34 (31.5%)	12 (33.3%)
Mujer	74 (68.5%)	24 (66.7%)
Edad, Media (desviación estándar)	45.8 (8.45)	42.0 (10.5)
Edad, Mediana [Q1;Q3]	47.0 [40.0;51.0]	42.0 [33.8;50.2]
IMC máximo, Media (desviación estándar)	53.9 (5.92)	55.7 (7.74)
IMC máximo, Mediana [Q1;Q3]	49.9 [47.3;56.0]	57.6 [48.1;62.4]
IMC máximo, N (%):		
< 50	55 (50.9%)	12 (33.3%)
50 - 55	15 (13.9%)	4 (11.1%)
> 55	38 (35.2%)	20 (55.6%)
DM, N (%):		
No	64 (59.3%)	23 (63.9%)
Sí	44 (40.7%)	13 (36.1%)
HTA, N (%):		
No	55 (50.9%)	20 (55.6%)
Sí	53 (49.1%)	16 (44.4%)
Dislipemia, N (%):		
No	84 (77.8%)	29 (80.6%)
Sí	24 (22.2%)	7 (19.4%)
SAOS, N (%):		
No	44 (40.7%)	13 (36.1%)
Sí	64 (59.3%)	23 (63.9%)



1 tiempo  
2 tiempos

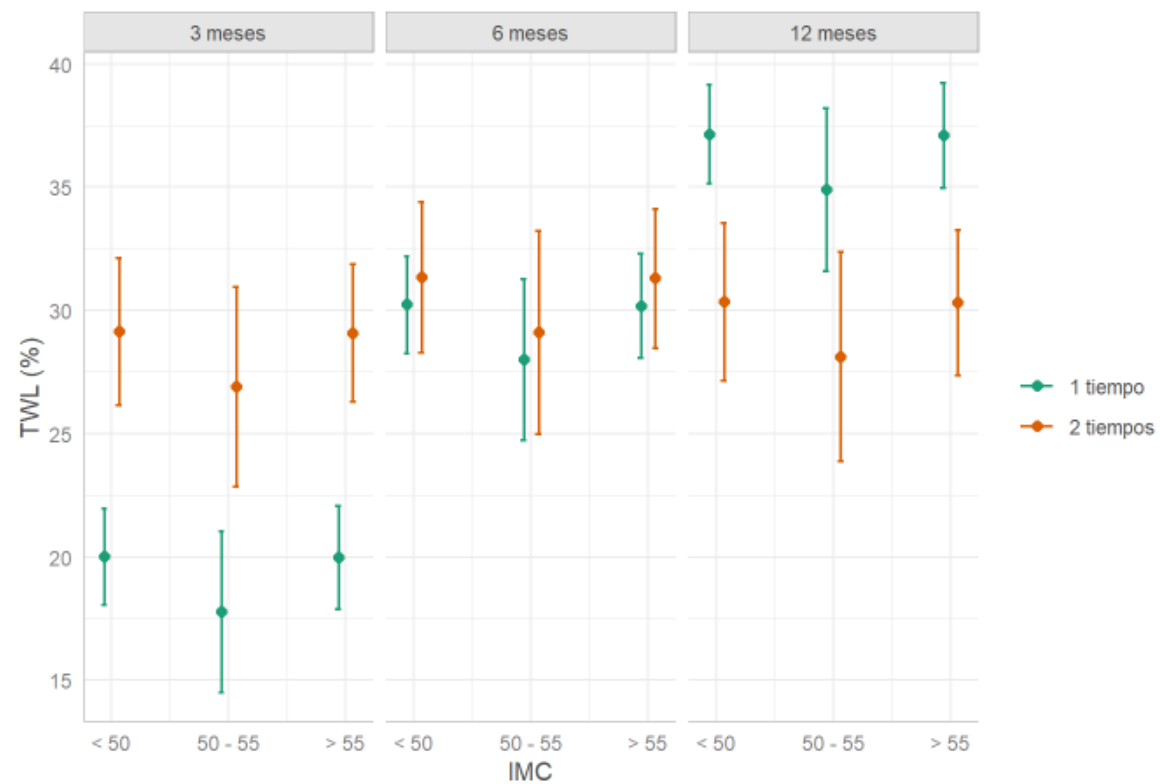
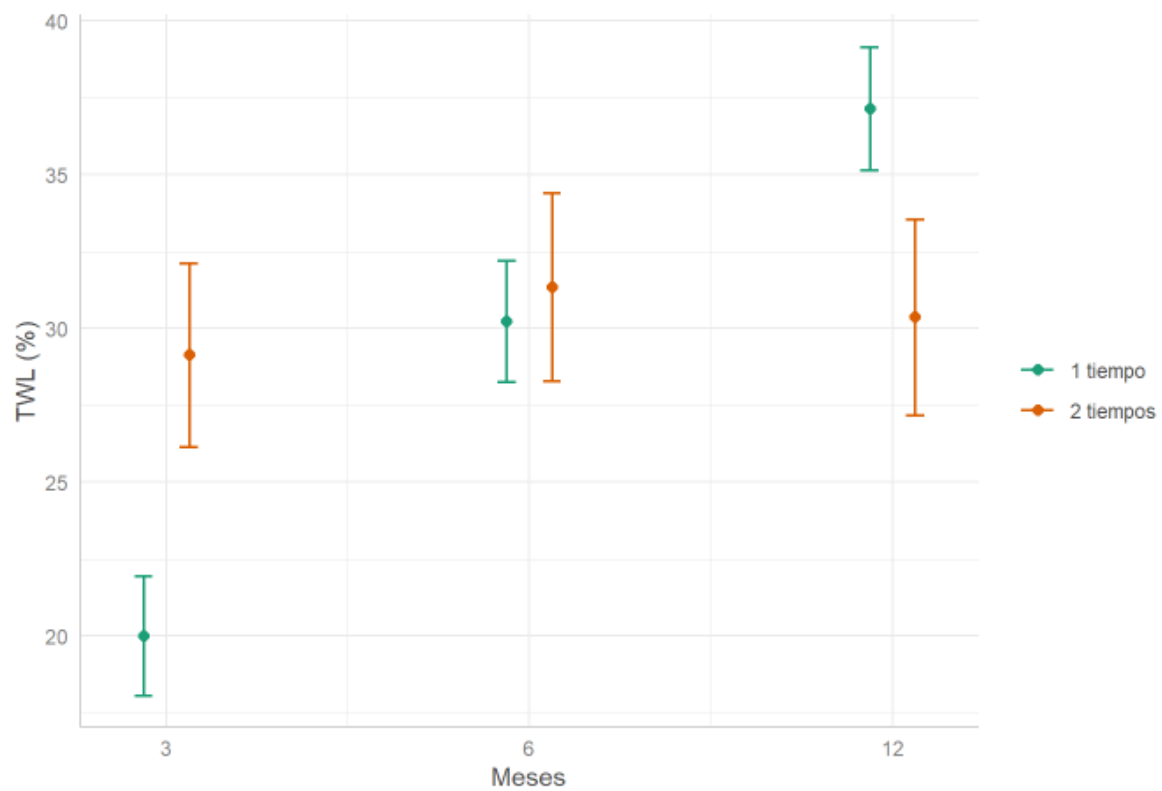
	Peso preoperatorio	Peso 3 meses	Peso 6 meses	Peso 1 año	Peso 2 años	Peso 3 años	Peso 4 años	Peso 5 años
<b>1 tiempo</b>								
Media (desviación estándar)	125 (17.7)	100 (15.8)	87.6 (14.2)	77.8 (13.6)	80.1 (16.0)	78.3 (10.4)	81.4 (10.6)	83.7 (11.3)
Mediana [Q1;Q3]	125 [113;135]	98.5 [89.0;112]	86.0 [77.1;96.6]	75.8 [68.2;84.1]	76.7 [70.0;87.0]	79.0 [73.8;84.0]	82.0 [75.0;86.5]	83.5 [78.4;91.5]
NAs (%)	0 (0%)	13 (12.04%)	22 (20.37%)	30 (27.78%)	55 (50.93%)	83 (76.85%)	91 (84.26%)	100 (92.59%)
<b>2 tiempos</b>								
Media (desviación estándar)	139 (22.5)	97.1 (12.4)	94.9 (14.1)	96.1 (11.6)	98.7 (9.94)	101 (12.6)	114 (4.62)	. (.)
Mediana [Q1;Q3]	138 [125;157]	96.7 [86.5;108]	95.0 [84.2;103]	100 [89.0;104]	98.0 [91.0;106]	102 [91.6;111]	111 [111;115]	. [.,.]
NAs (%)	3 (8.33 %)	3 (8.33 %)	6 (16.67 %)	12 (33.33 %)	23 (63.89 %)	28 (77.78 %)	33 (91.67 %)	36 (100 %)





● 1 tiempo  
● 2 tiempos

	TWL 3 meses	TWL 6 meses	TWL 1 año	TWL 2 años	TWL 3 años	TWL 4 años	TWL 5 años
<b>1 tiempo</b>							
Media (desviación estándar)	19.7 (5.93)	29.9 (6.73)	37.0 (7.82)	34.8 (10.1)	33.3 (10.1)	31.4 (11.0)	30.2 (12.8)
Mediana [Q1;Q3]	19.2 [15.9;23.4]	29.6 [25.5;34.3]	36.4 [31.5;43.2]	34.5 [28.9;42.7]	32.7 [25.7;40.1]	30.9 [26.1;40.0]	33.7 [19.3;38.4]
NAs (%)	13 (12.04%)	22 (20.37%)	30 (27.78%)	55 (50.93%)	83 (76.85%)	91 (84.26%)	100 (92.59%)
<b>2 tiempos</b>							
Media (desviación estándar)	29.0 (7.82)	32.0 (7.96)	31.0 (9.37)	29.0 (9.74)	24.8 (6.94)	24.0 (1.91)	. (.)
Mediana [Q1;Q3]	28.9 [23.5;35.1]	32.3 [27.4;37.5]	30.6 [26.6;37.0]	32.0 [23.5;34.6]	25.3 [21.4;30.7]	23.4 [22.9;24.8]	. [.;]
NAs (%)	4 ( 11.11 %)	7 ( 19.44 %)	13 ( 36.11 %)	24 ( 66.67 %)	28 ( 77.78 %)	33 ( 91.67 %)	36 ( 100 %)



	1 tiempo	2 tiempos
	N=108	N=36
Complicación, N (%):		
No	81 (75.0%)	30 (83.3%)
Sí	17 (15.7%)	6 (16.7%)
'Missing'	10 (9.26%)	0 (0.00%)
Nº complicaciones, Media (desviación estándar)	1.06 (0.25)	1.00 (0.00)
Nº complicaciones, Mediana [Q1;Q3]	1.00 [1.00;1.00]	1.00 [1.00;1.00]
Complicación grave, N (%):		
No complicación	81 (75.0%)	30 (83.3%)
No	4 (3.70%)	2 (5.56%)
Sí	9 (8.33%)	3 (8.33%)
'Missing'	14 (13.0%)	1 (2.78%)
Clavien dindo, N (%):		
No complicación	81 (75.0%)	30 (83.3%)
I	2 (1.85%)	0 (0.00%)
II	2 (1.85%)	2 (5.56%)
III a	2 (1.85%)	1 (2.78%)
III b	7 (6.48%)	1 (2.78%)
IV a	0 (0.00%)	1 (2.78%)
'Missing'	14 (13.0%)	1 (2.78%)

**Table of nutritional supplementation after SADI-S**

SADI-S n = 144	
<b>Nutritional supplementation</b>	
Vitamin A	16
Vitamin B	4
Vitamin K	0
Vitamin E	0
Vitamin D	40
<b>Calcium</b>	13
<b>Iron</b>	21
<b>Cooper</b>	2
<b>Zinc</b>	1
<b>Folic acid</b>	22
<b>Albumin</b>	0

## Conclusions

- Direct and 2 step SADI-S are sides of the same coin
- Both achieve excellent results on mid term
- There is no difference in complications
- Multidisciplinary evaluation is crucial to select the best option

We're already running a multicentric matching analysis



 Bellvitge  
Hospital Universitari  
Institut Català de la Salut



Bellvitge  
Hospital Universitari  
Institut Català  
de la Salut

BMI < 45 kg/m<sup>2</sup>

BMI 45-50 kg/m<sup>2</sup>

BMI 50-55 kg/m<sup>2</sup>

Diabetic  
Comorbidities

Non Diabetic  
No Comorbidities

Direct SADI-S

Maximum BMI  
< 50 kg/m<sup>2</sup>

BMI 50-55  
kg/m<sup>2</sup>

Maximum  
BMI > 55 kg/m<sup>2</sup>

< 1 year after Sleeve  
< 50 years old  
Non-diabetic  
Poor compliance

> 1 year after Sleeve  
> 50 years old  
Diabetic  
Good compliance

2 Step SADI-S

2 Step DS

Sleeve Gastrectomy

Insufficient weight loss / weight  
regain  
**NO GERD**