



OAGB will have more complications than it appears

Prof Francois Pattou

University Hospital of Lille, France

Multicenter randomized trial - YOMEGA

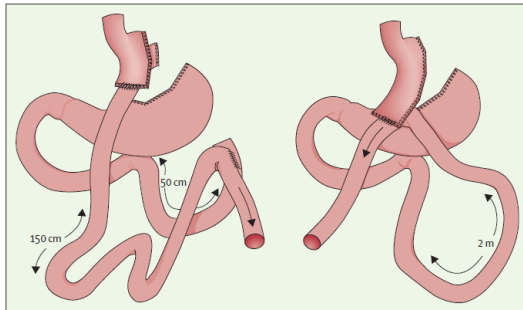


Maud Robert

Efficacy and safety of one anastomosis gastric bypass versus Roux-en-Y gastric bypass for obesity (YOMEGA): a multicentre, randomised, open-label, non-inferiority trial

Maud Robert, Philippe Espalieu, Elise Pelascini, Robert Caiazzo, Adrien Sterkers, Lita Khamphommala, Tigran Poghosyan, Jean-Marc Chevallier, Vincent Malherbe, Elie Chouillard, Fabian Reche, Adriana Torcivia, Delphine Maucort-Boulch, Sylvie Bin-Dorel, Carole Langlois-Jacques, Dominique Delaunay, François Pattou, Emmanuel Disse

*Lancet Diabetes
Endocrinol 2019*

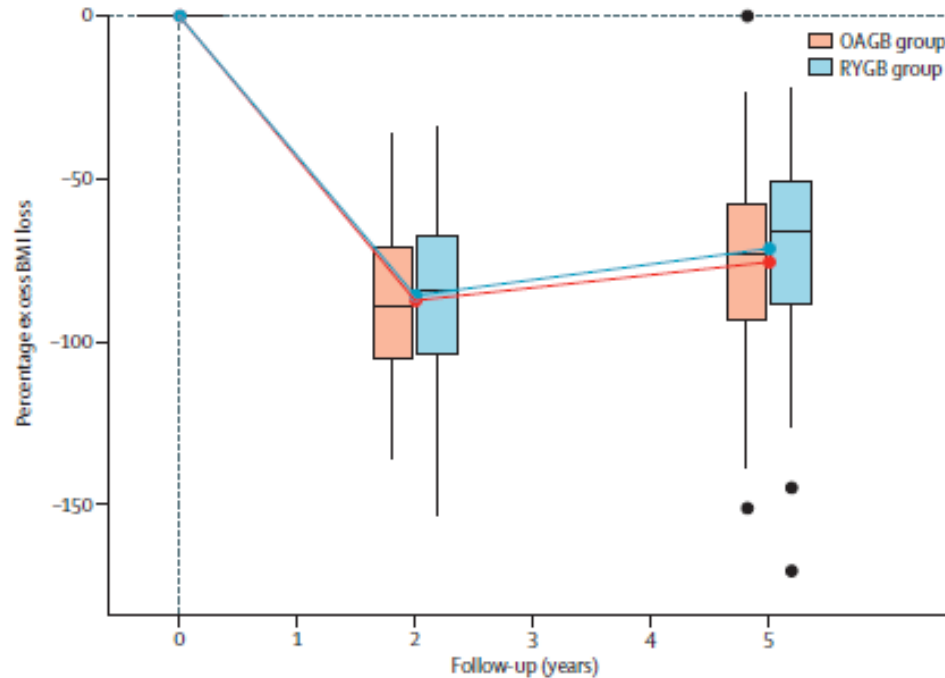


Efficacy and safety of one anastomosis gastric bypass versus Roux-en-Y gastric bypass at 5 years (YOMEGA): a **post-hoc analysis of a prospective, open-label, non-inferiority, randomised trial**

Maud Robert, Tigran Poghosyan, Delphine Maucort-Boulch, Alexandre Filippello, Robert Caiazzo, Adrien Sterkers, Lita Khamphommala, Fabian Reche, Vincent Malherbe, Adriana Torcivia, Toufic Saber, Dominique Delaunay, Carole Langlois-Jacques, Augustin Suffisseau, Sylvie Bin, Emmanuel Disse, François Pattou

*Lancet Diabetes
Endocrinol 2024*

Similar efficacy of OAGB and RYGB at 5 years

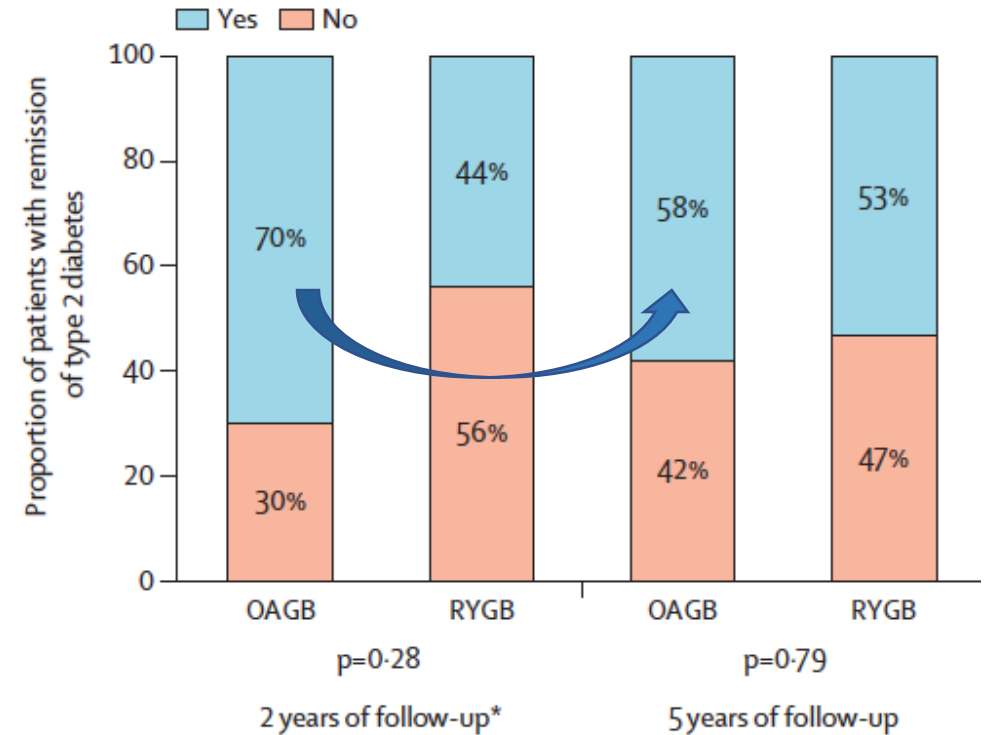


OAGB group
RYGB group

2 years of follow-up
Mean -87.4% (SD 23.9); n=71
Mean -85.8% (SD 23.3); n=85

5 years of follow-up
Mean -75.6% (SD 28.1); n=72
Mean -71.4% (SD 29.8); n=78

Weight loss



Diabetes remission

...more early nutritional severe adverse events

Choisir l'affichage de la barre latérale

	Modified intention-to-treat population (n=248)	RYGB group (n=121)	OAGB group (n=127)	p value
Serious adverse event related to the technique				
Between baseline and 2 years*	66	24	42	0.04
Nutritional complications	9	0	9	0.0034
Between 2 years and 5 years	45	22	23	0.70
Nutritional complications	0	0	2	..
Iron infusion		9/76 (12%)	11/71 (16%)	0.52
Surgical complications between 2 years and 5 years				
Number of patients	44/155 (28%)	20/78 (26%)	24/77 (31%)	0.45
Acute anastomotic ulcer	2	0	2	..
Chronic anastomotic ulcer	1	0	1	..
Internal hernia	2	2	0	..
Cholecystectomy	14	8	6	..
Incisional hernia	6	1	5	..
Weight regain	1	1	0	..
Conversion to RYGB	6	0	6	..
Others	19	10	9	..
Total surgical complications	51	22†	29‡	..

Robert et al.
*Lancet Diabetes
 Endocrinol* 2024

Twice more clinical GERD with OAGB at 5 years

	OAGB (n=114)		RYGB (n=118)	p
Clinical GERD* at 2 years	5.6%		1.4%	0.15
Cinical GERD* at 5 years	40.9%	x 2	18.4%	0.03
Use of PPI \geq 20 mg/ day at 5 years	42%		24.7%	0.026

* regurgitations, heartburn, positional syndrome, nocturnal cough and the use and dose of proton pump inhibitors in mg

Robert et al.
*Lancet Diabetes
Endocrinol* 2024

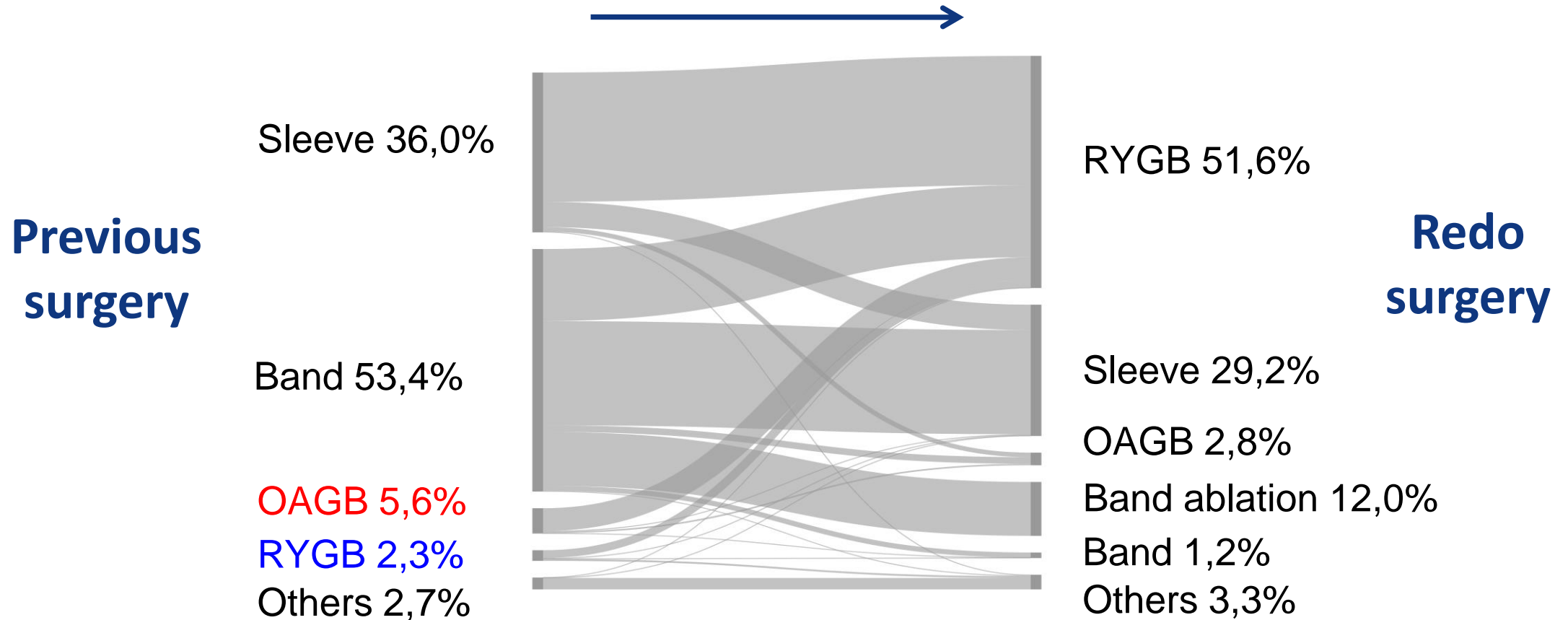
Conversions from OAGB to RYGB

time of conversion	Patient	Reason for conversion					Comments
		GERD	Ulcer +/- Esophagitis	Vitamin deficiencies	Diarrhea	Anastomotic Leak	
0-2 years	02-016					+	
	04-031			+			Wernicke encephalopathy
	07-002	+	+				
	08-003	+		+	+		
2-5 years	02-009	+	+				
	02-018	+					
	04-005			+			
	04-006		+				
	04-042	+		+	+		
	09-005	+	+				

8% after 5 years

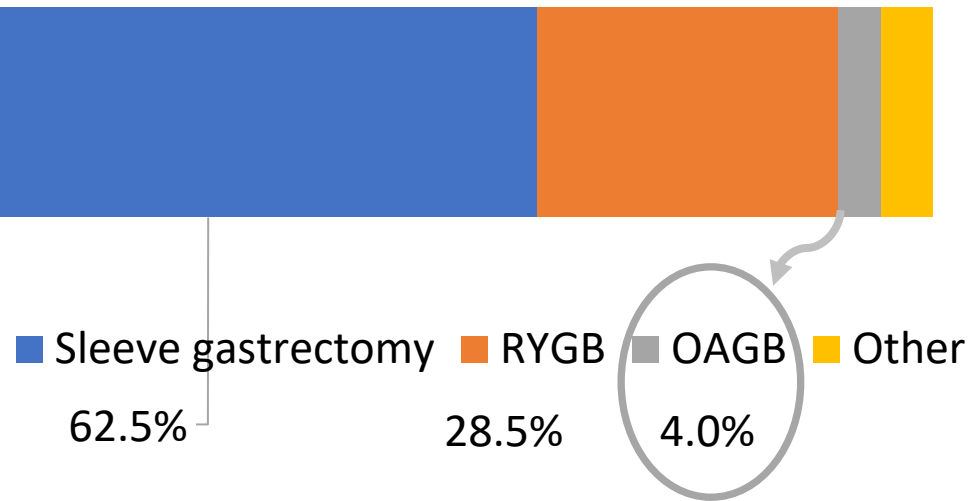
Robert et al.
Lancet Diabetes Endocrinol 2024

Redo surgery in France (SOFFCO-MM registry)

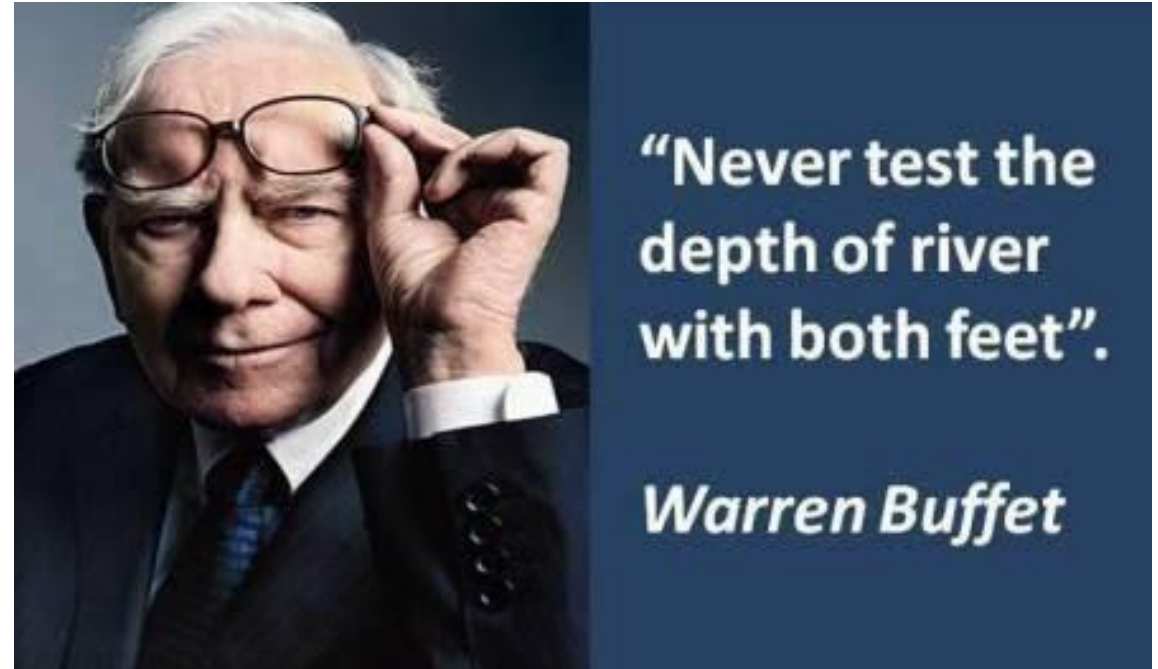


Real bariatric world (IFSO global registry)

449,000 primary procedures in 2022 (2021)



Brown et al. Obesity Surg 2024

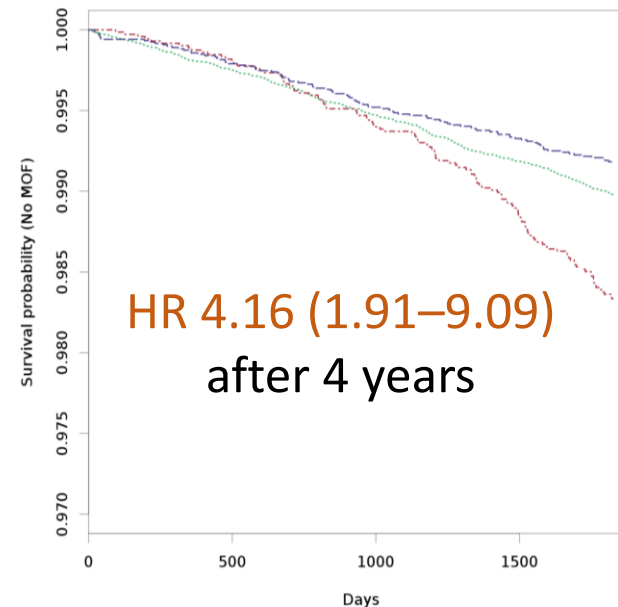


Other complications will also happen ...

1. Secondary hyperparathyroidism -> **Osteoporosis** -> one fractures

Major bone fractures
in 19,000 BS patients (> 40 years)
vs 45,000 matched controls

Paccou et al. *J Bone Mineral Res* 2022
Paccou et al. *SOARD* 2022



Restrictive surgery

No surgery

Hypobsoptive surgery

2. Hyperoxaluria -> **Kidney stones** -> End stage renal disease

Histological findings will likely worsen with time

Long term (12–21 Years) endoscopic findings in a RCT
Billroth II vs Roux-en-Y anastomosis after partial gastrectomy for ulcers

	Billroth II n = 33	Roux-en-Y n = 31	P
Endoscopic findings			
Normal	17 (51.5%)	28 (90.3%)	<0.0009
Erosive esophagitis	4 (12.1%)	1 (3.2%)	n.s.
Moniliasis	2 (6.1%)	1 (3.2%)	n.s.
Carcinoma	1 (3.0%)	—	
Short segment columnar epithelium	8 (24.2%)	1 (3.2%)	<0.0001
Histological findings			
Funditis	10 (30.3%)	16 (51.6%)	n.s.
Carditis	15 (45.4%)	14 (45.2%)	n.s.
Intestinal metaplasia	7 (21.2%)	1 (3.2%)	<0.001
Squamous cell carcinoma	1 (3.1%)	—	
Moniliasis	2 (6.1%)	1 (3.2%)	n.s.
<i>Helicobacter pylori</i>	5 (15.1%)	5 (16.1%)	n.s.

Scendes, Diaz et al.
Ann Surg 2009