

SASI will rise as easier and reasonable option after Sleeve Gastrectomy

John Rodriguez, MD, FACS
Chair of Surgery
Cleveland Clinic Abu Dhabi



كليفلاند كلينك أبوظبي
Cleveland Clinic Abu Dhabi

XXVII IFSO World Congress



Melbourne 2024

In accordance with «EACCME criteria for the Accreditation of Live Educational Events», please disclose whether you have or not any conflict of interest with the companies:

Speaker/Consultant

Medtronic

Ethicon

Endogastric Solutions

Apollo Endosurgery

Boston Scientific

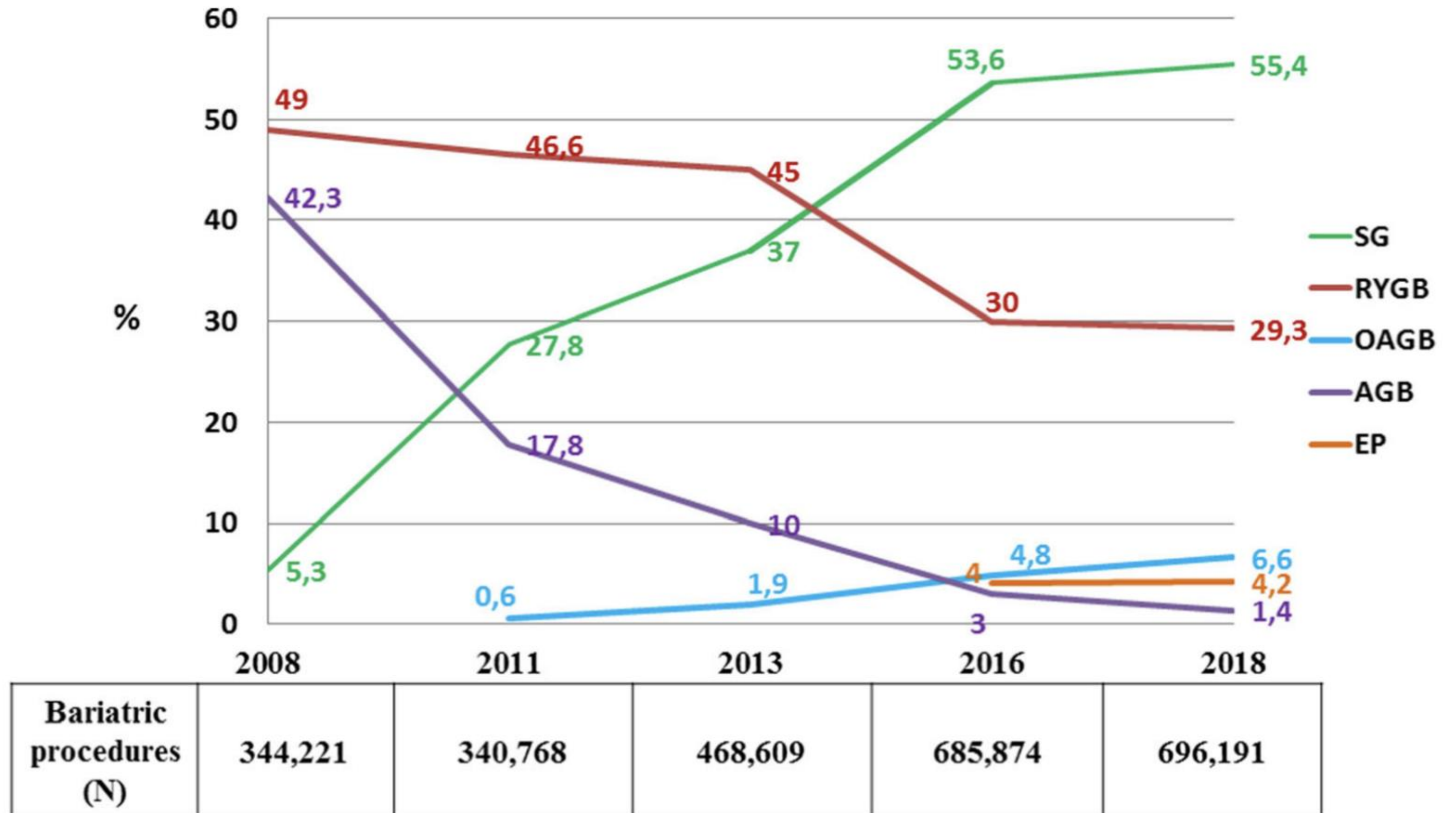
Cook

Gore

Bariatric Surgery Survey 2018: Similarities and Disparities Among the 5 IFSO Chapters.

Luigi Angrisani, Antonella Santonicola, Paola Iovino, Almino Ramos, Scott Shikora, Lilian Kow

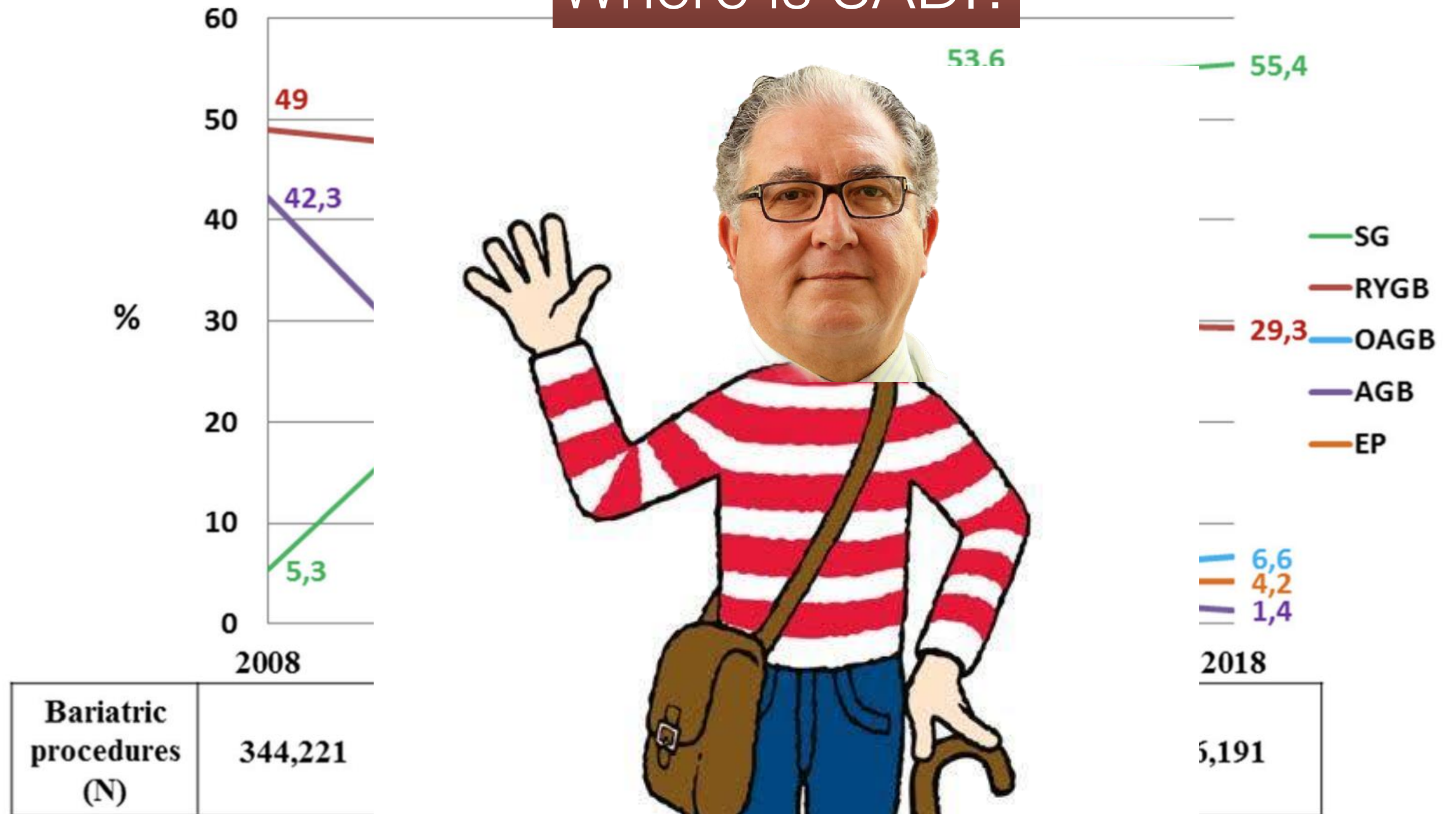
Fig. 1 Long-term trend and total number of bariatric/metabolic surgical operations from 2008 to 2018, and endoluminal procedures in the world from 2016 to 2018



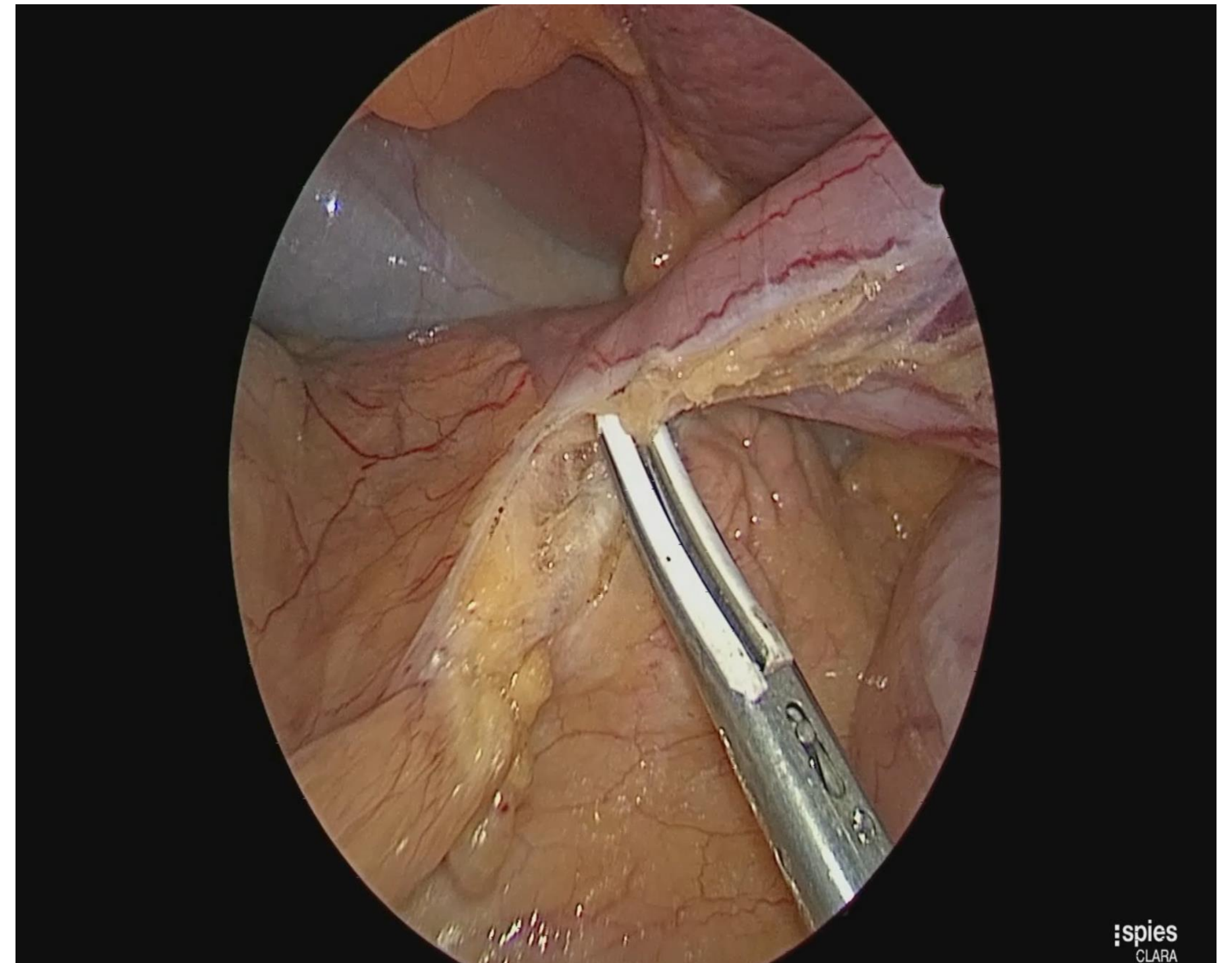
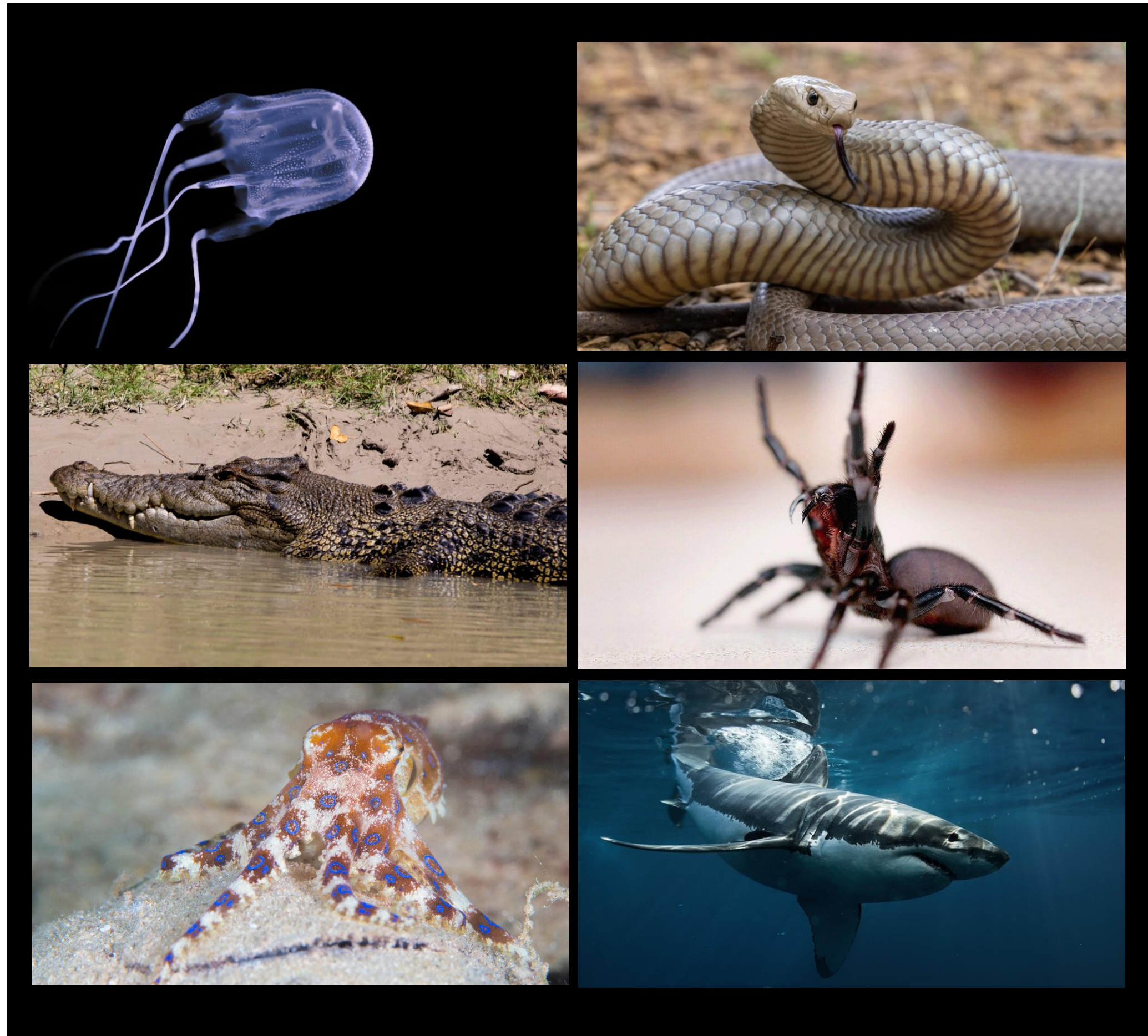
Bariatric Surgery Survey 2018: Similarities and Disparities Among the 5 IFSO Chapters.

Luigi Angrisani, Antonella Santonicola, Paola Iovino, Almino Ramos, Scott Shikora, Lilian Kow

Fig. 1 Long-term trend and total number of bariatric/metabolic surgical operations from 2008 to 2018, and endoluminal procedures in the world from 2016 to 2018



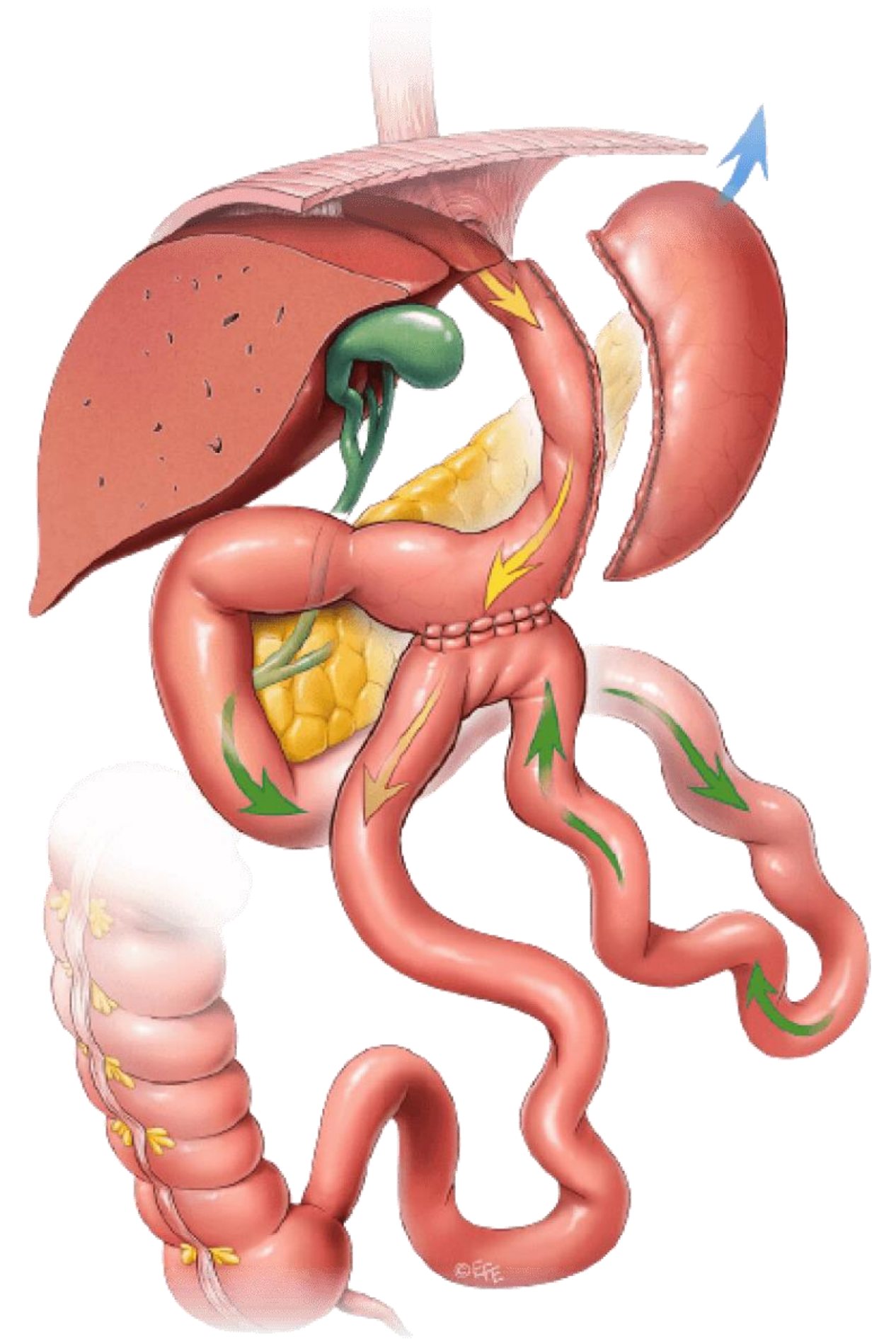
THINGS THAT NORMAL PEOPLE ARE AFRAID OF...



spies
CLARA

RATIONALE FOR SINGLE ANASTOMOSIS SLEEVE ILEAL BYPASS

- ▶ Bipartition physiology
- ▶ Technical simplicity
- ▶ Maintains access to biliary system
- ▶ Early metabolic results similar to SADI
- ▶ Decrease technical and nutritional complications



Systematic review of the outcome of single-anastomosis sleeve ileal (SASI) bypass in treatment of morbid obesity with proportion meta-analysis of improvement in diabetes mellitus.

Sameh Hany Emile, Tarek Mahdy, Carl Schou, Michael Kramer, Scott Shikora

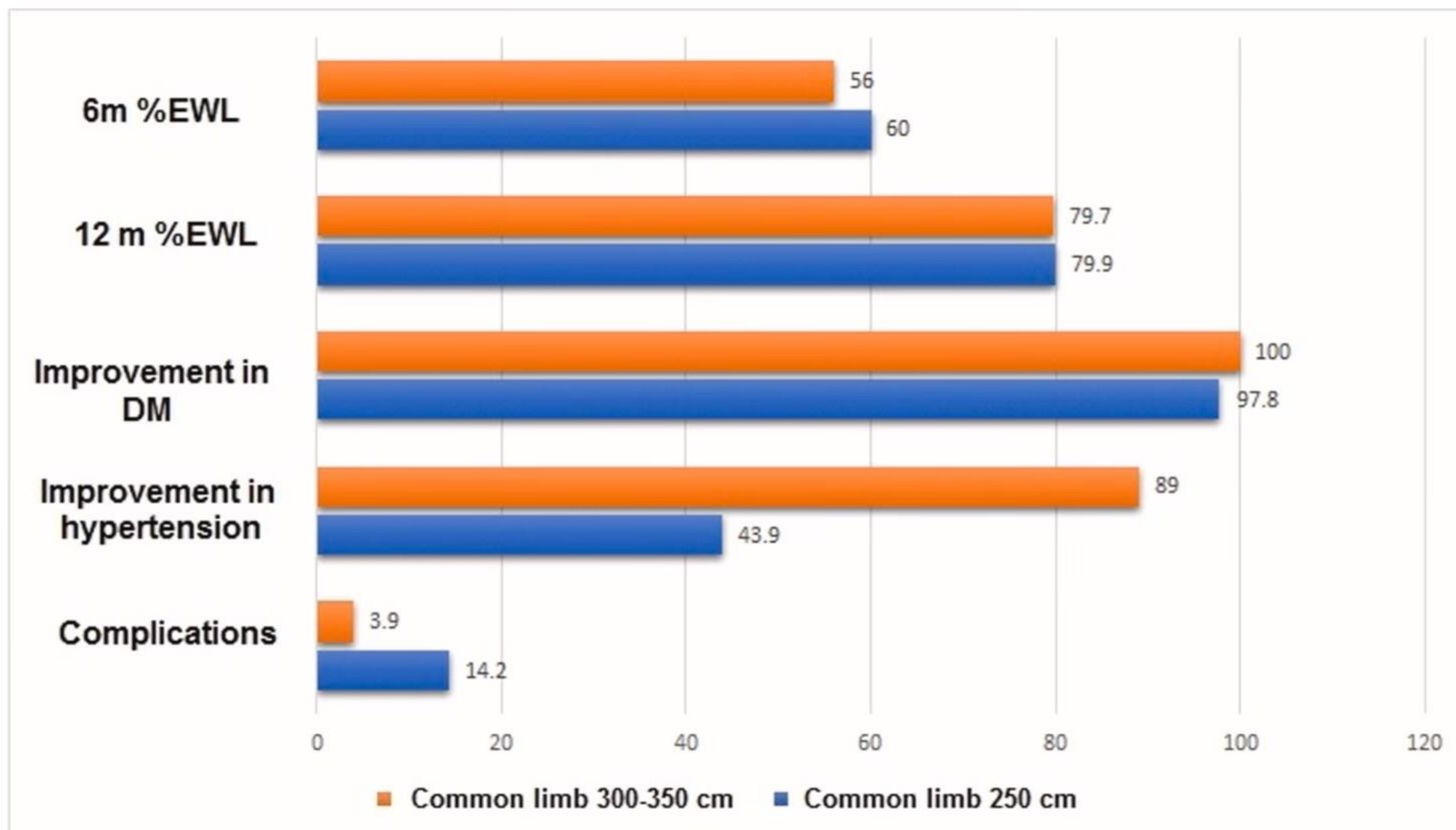


Fig. 3. Outcomes of SASI bypass with common limb of 250 cm versus 300–350 cm.

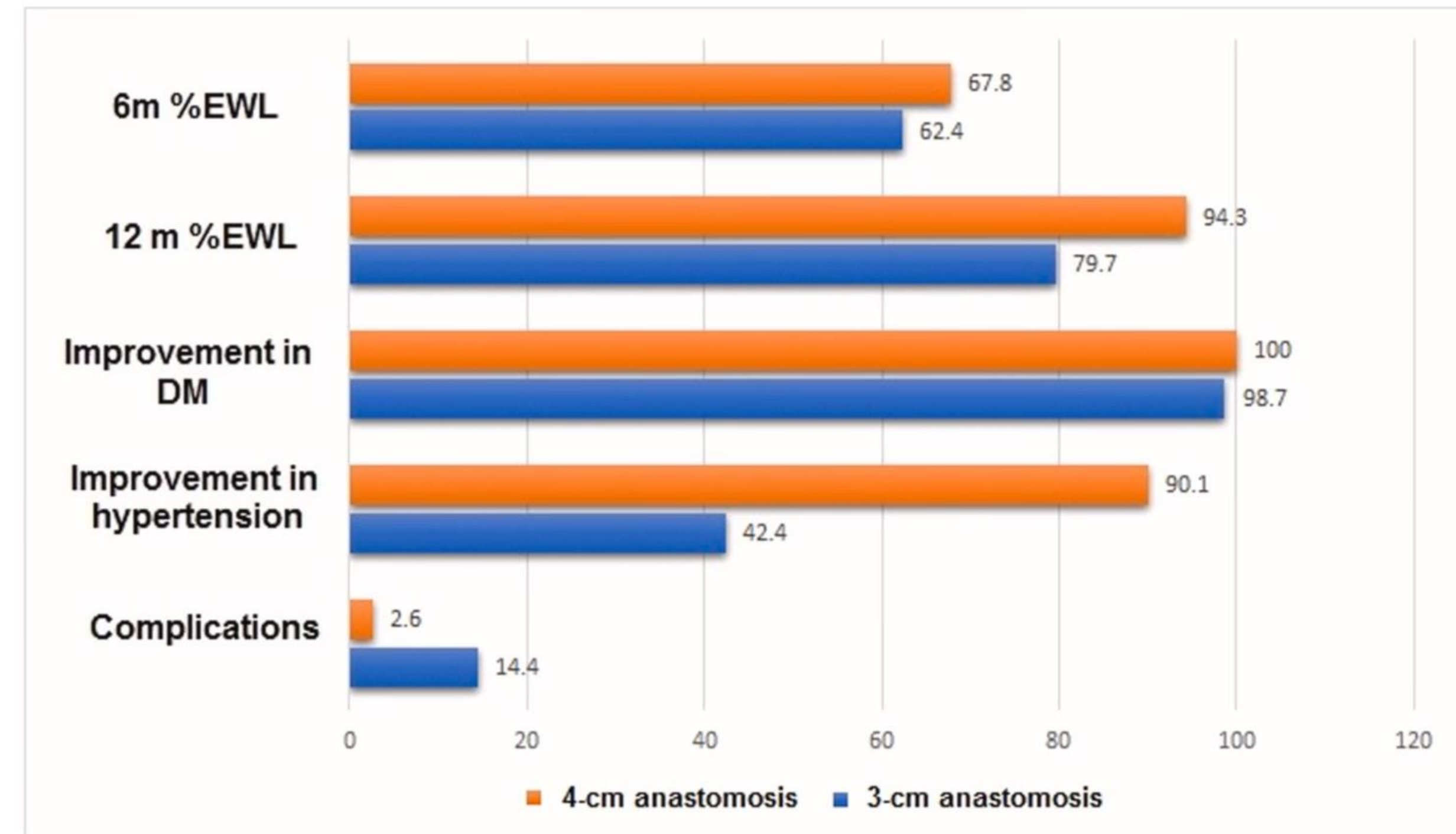
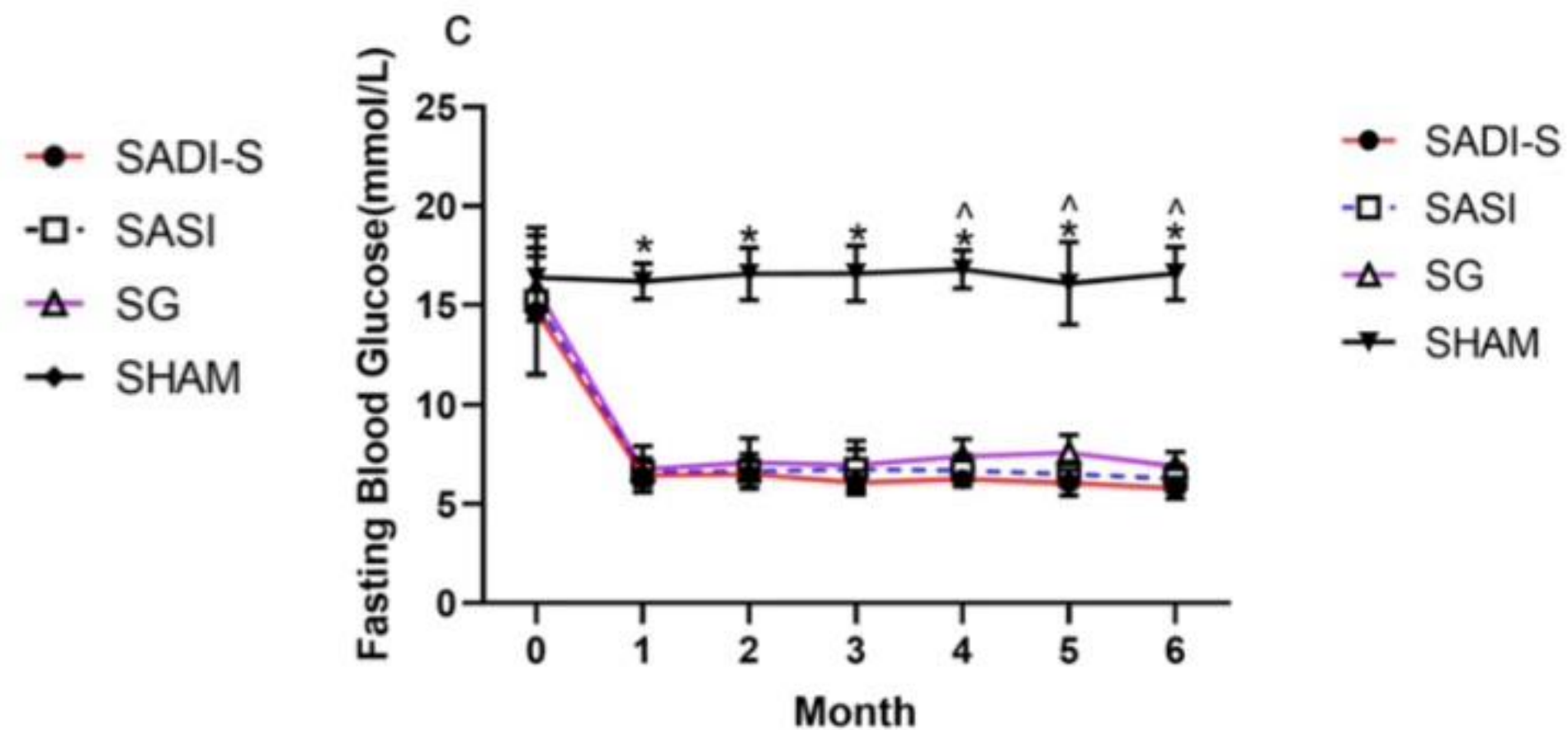
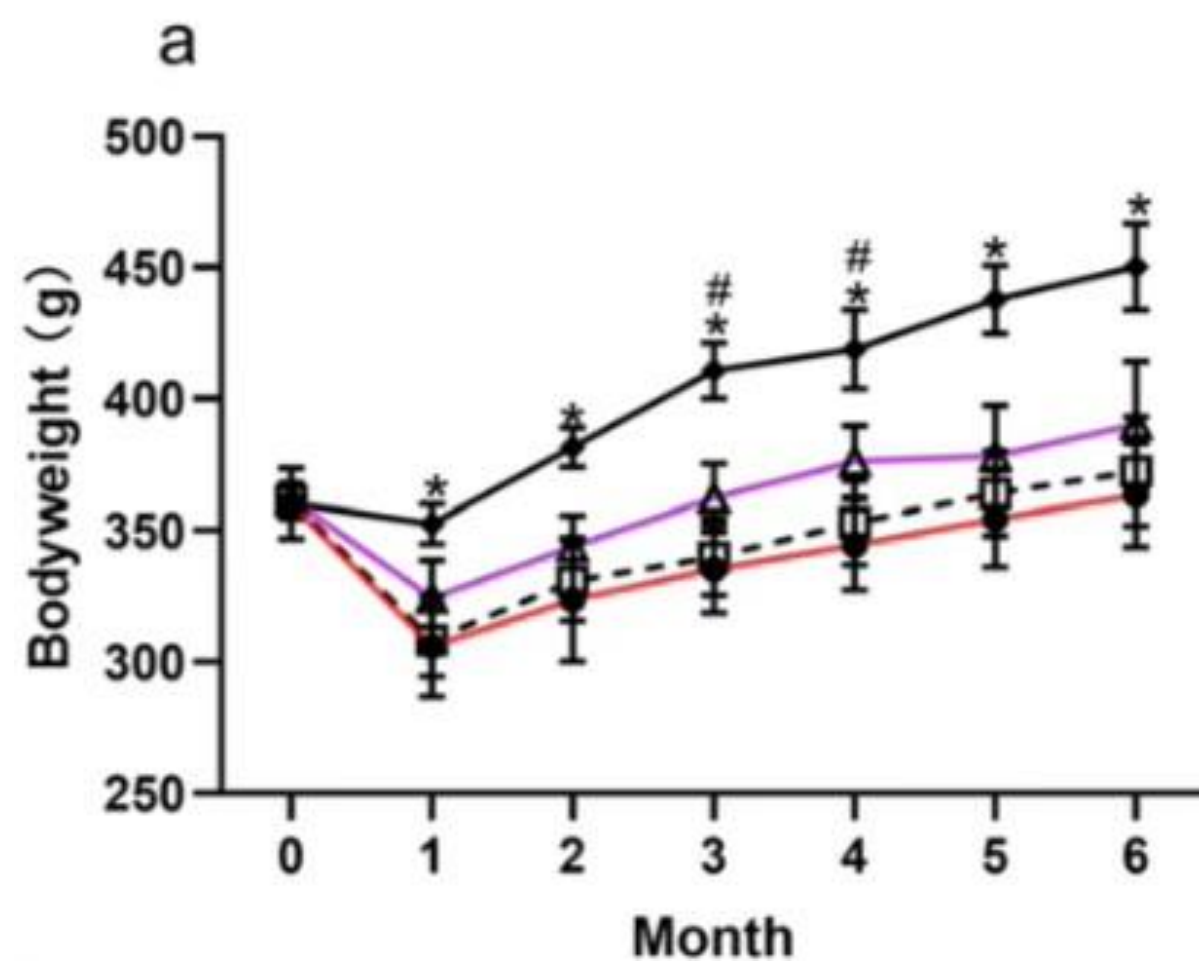


Fig. 4. Outcomes of SASI bypass with anastomosis size of 3 cm versus 4 cm.

Obesity Surgery. 2022 Apr; 32 (4) : 1209-1215.

Comparison of the Outcomes of Single Anastomosis Duodeno-Ileostomy with Sleeve Gastrectomy (SADI-S), Single Anastomosis Sleeve Ileal (SASI) Bypass with Sleeve Gastrectomy, and Sleeve Gastrectomy Using a Rodent Model with Diabetes.

Wei Wu, Jason Widjaja, Sheng Lu, Jian Hong, Libin Yao, Xiaocheng Zhu



- Hypoalbuminemia
SADI > SASI
- Ferropenia
SADI > SASI



+971589882298

rodrigj2@clevelandclinicabudhabi.ae