

# Identification of patients' needs in follow up care after bariatric surgery

Freya Brodersen, Jonas Wagner, Madita Roll, Oliver Mann, Angelika Weigel, Anna Duprée

Department of General, Visceral and Thoracic Surgery

Department of Psychosomatic Medicine and Psychotherapy

University Medical Center Hamburg-Eppendorf

**I have no potential conflict of interest to report**

## Background

- Bariatric surgery is the most effective treatment for severe obesity (Sjostrom et al. 2007 NEJM)
- Lifelong follow up is recommended (O'Brien et al. 2019 Obesity Surgery)

## Postoperative Follow-up Compliance: The Achilles' Heel of Bariatric Surgery

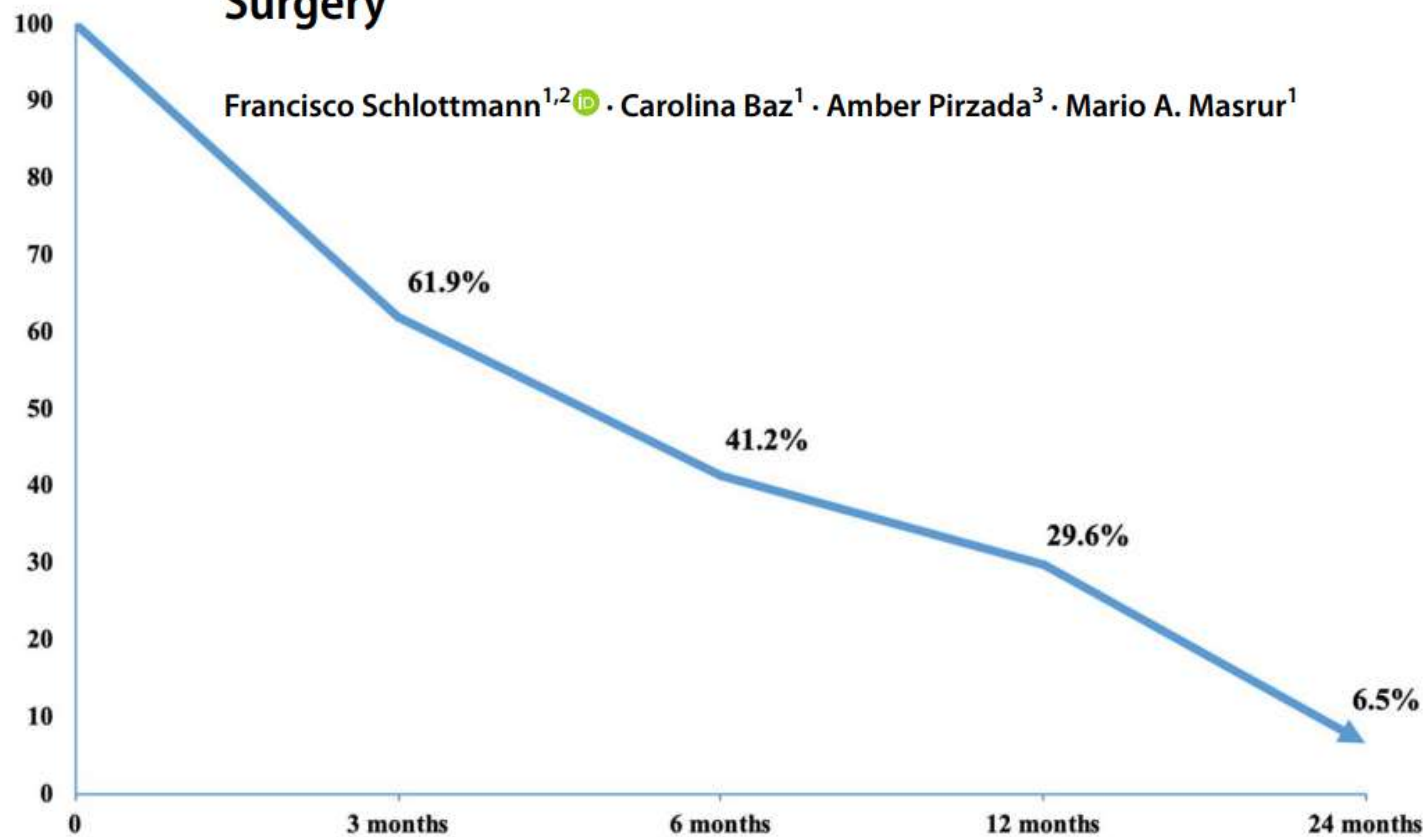
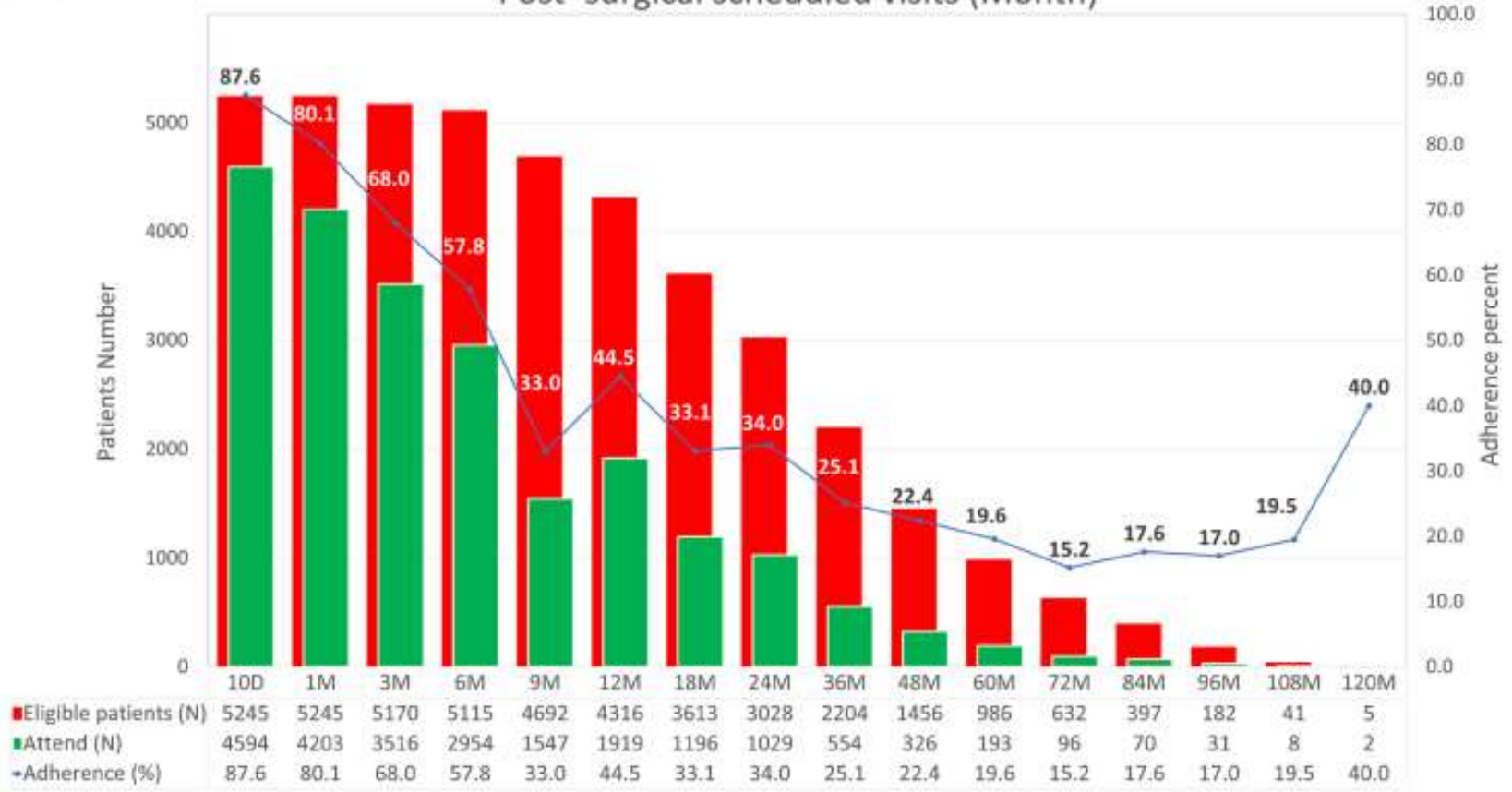


Fig. 1 Follow-up rates after bariatric surgery

# Determinants of Patient's Adherence to the Predefined Follow-up Visits After Bariatric Surgery

Seyed Amin Setarehdan<sup>1,2</sup> · Ali Sheidaei<sup>3</sup> · Somayeh Mokhber<sup>1,2</sup> · Fatemeh Varse<sup>2</sup> · Abdolreza Pazouki<sup>1,4</sup> · Masoud Solaymani-Dodaran<sup>1,2</sup>


Post-surgical scheduled visits (Month)

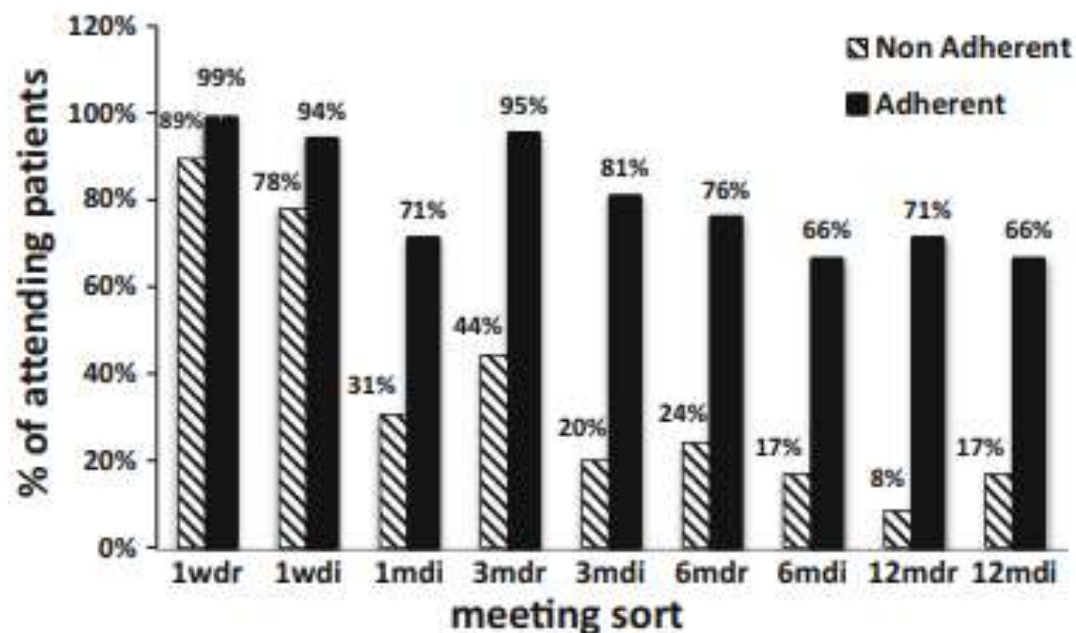


**UKE** Hamburg  
 Freya Brodersen  
 Obesity Center of Excellence  
 adipositas@uke.de



# Predictors for Adherence to Multidisciplinary Follow-Up Care after Sleeve Gastrectomy

Ariela Goldenshluger<sup>1</sup>  · R. Elazary<sup>2</sup> · M. J. Cohen<sup>3</sup> · M. Goldenshluger<sup>4</sup> · T. Ben-Porat<sup>1</sup> · J. Nowotni<sup>5</sup> · H. Geraiši<sup>2</sup> · M. Amun<sup>2</sup> · A. J. Pikarsky<sup>2</sup> · L. Keinan-Boker<sup>6</sup>



**Fig. 1** Proportions of post-bariatric surgery patients that attended scheduled surgeon and dietitian meetings in the adherent and non-adherent groups. 1wdr = Dr. appointment after 1 postoperative week; 1wdi = dietitian appointment after 1 postoperative week; 1mdi = dietitian

appointment after 1 postoperative month; 3mdr = 3 postoperative months Dr. appointment; 3mdi = 3 postoperative months dietitian appointment; 6mdr/6mdi/12mdr/12mdi = 6 or 12 postoperative months Dr. and dietitian appointments, respectively

## 'The rollercoaster of follow-up care' after bariatric surgery: a rapid review and qualitative synthesis

H. M. Parretti<sup>1</sup> , C. A. Hughes<sup>2,3</sup> and L. L. Jones<sup>1</sup>

### 5-Year Follow up

*„He weighed me and was not impressed. That year I had regained a lot of weight. [...] After that, he lost complete interest in me. He didn't suggest or offer any advice on programs to help get me back on track. Nothing like that, because I was the stuppid one eating chocolate every day, so I only had myself to blame. [...]  
I got the feeling the follow up was really more for their sake than for mine.“*

## Obesity Surgery

### **‘The rollercoaster of follow-up care’ after bariatric surgery: a rapid review and qualitative synthesis**

H. M. Parretti<sup>1</sup> , C. A. Hughes<sup>2,3</sup> and L. L. Jones<sup>1</sup>

*„There’s a serious gap in the health care system. What’s the use of being monitored, followed up for 5 years, measured, and weighed, if you’re not encouraged to talk about where you are in your life? [...]“*



Knowing our patients' needs seems to be crucial for successful bariatric follow up care.

## Method

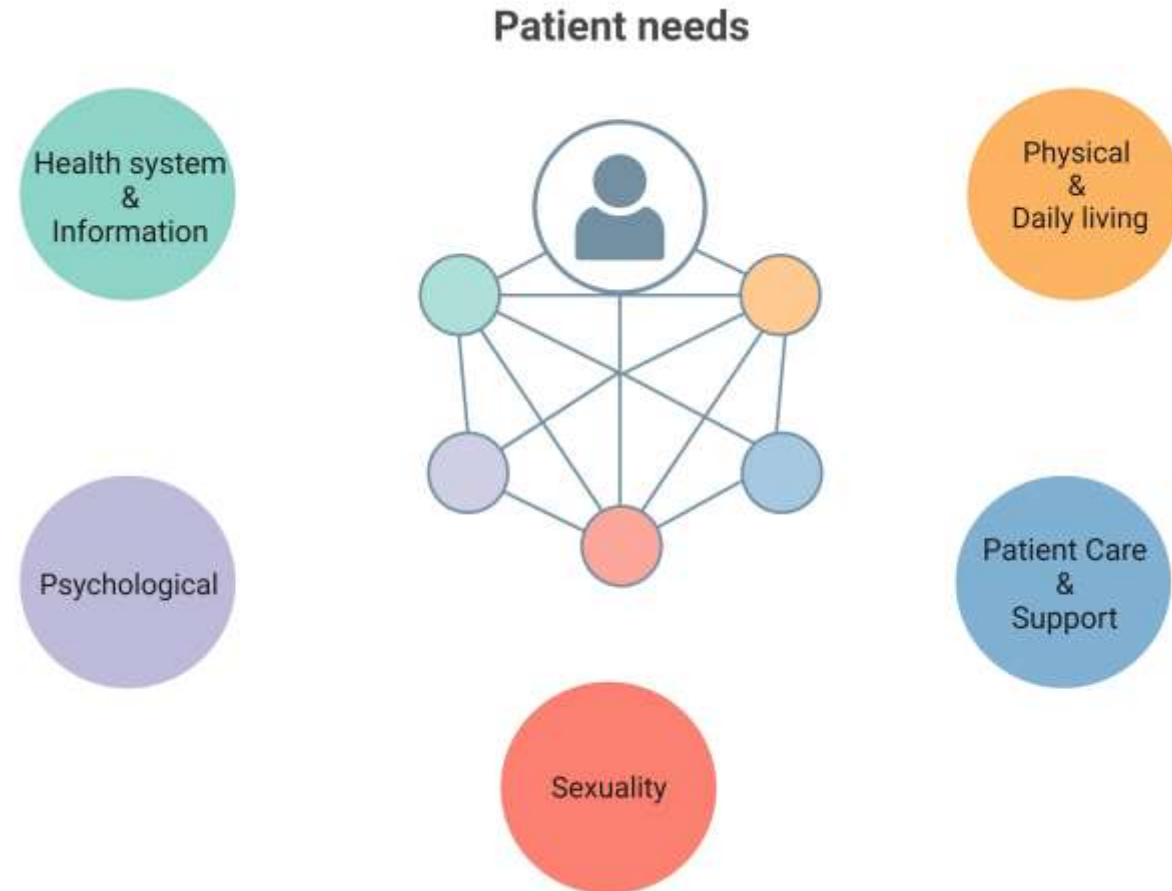
- Online questionnaire Supportive Care Needs Form (SCNF –SF34)
- Adaption to patients after bariatric surgery
- Contacted patients underwent bariatric surgery in period 2018-2022

## Method

Supportive Care

needs short form 34

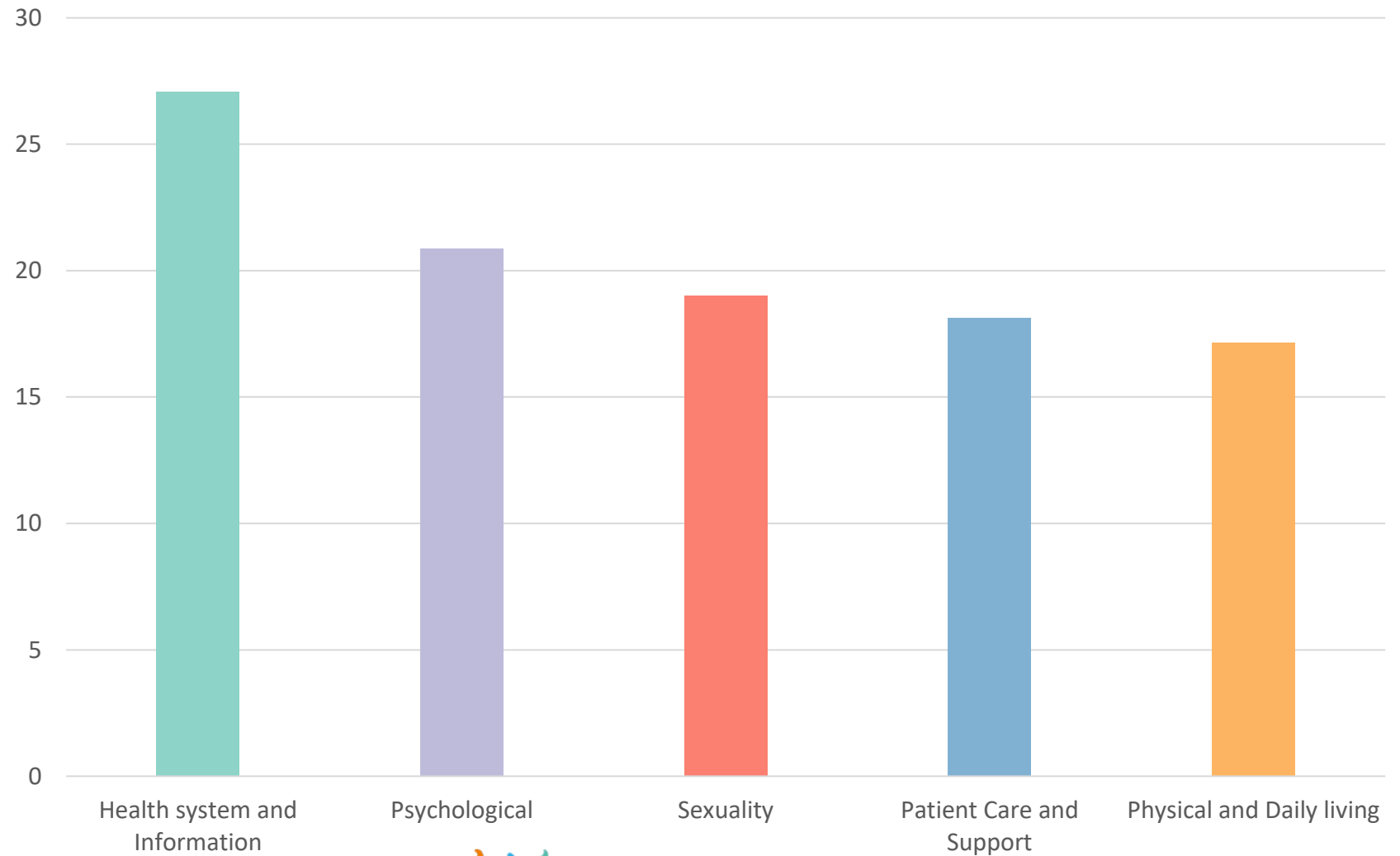
(SCNF –SF34)



## Results

- 238 patients gave consent to participate
- 185 patients completed the questionnaire

# Results



Freya Brodersen  
Obesity Center of Excellence  
adipositas@uke.de



NAPOLI  
2023

## Results

- Low scores of needs among our patients with SCNF –SF34
- informational and health system-related needs appears to be the most important among the categories
- Especially access to further support seems to be important in bariatric follow up care

## Conclusion

- Patients in bariatric follow up care seem to have informational und health system related needs
- The needs within the categories tended to be lower than anticipated
- No validated tool to assess patients' needs in bariatric follow up care
- More research is needed