

بِسْمِ اللَّهِ الرَّحْمَنِ الرَّحِيمِ

بِسْمِ اللَّهِ الرَّحْمَنِ الرَّحِيمِ

In the name of Allah, the Most Gracious, the Most Merciful.

INTEGRATE
YOUR...



IFSO
MELBOURNE 2024



XXVII IFSo World Congress
3 - 6 September 2024

Melbourne Convention
and Exhibition Centre



www.ifso2024.org

Congress Co-Presidents
Ahmad Aly & Harry Frydenberg



BILE FLOW AND TYPES OF ANASTOMOSIS IN OAGB

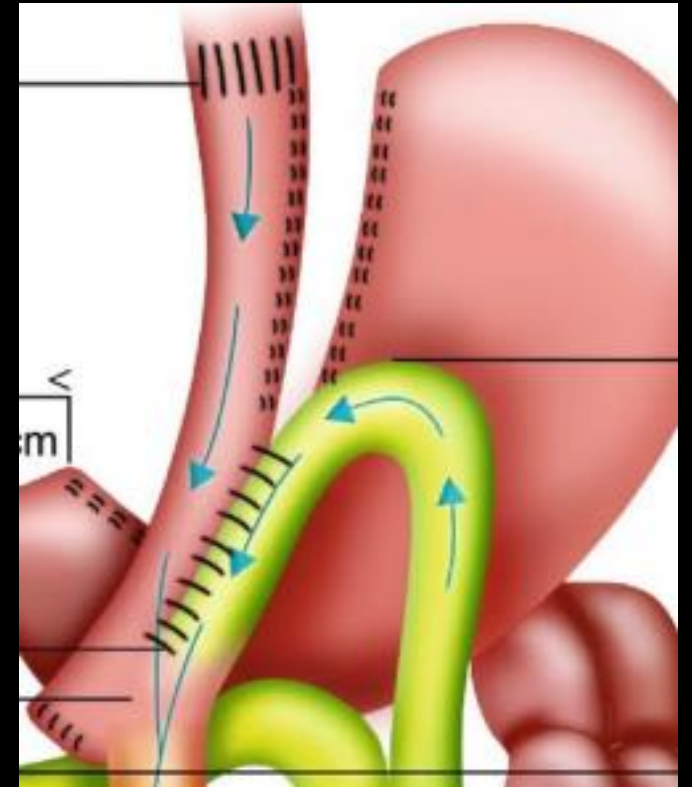
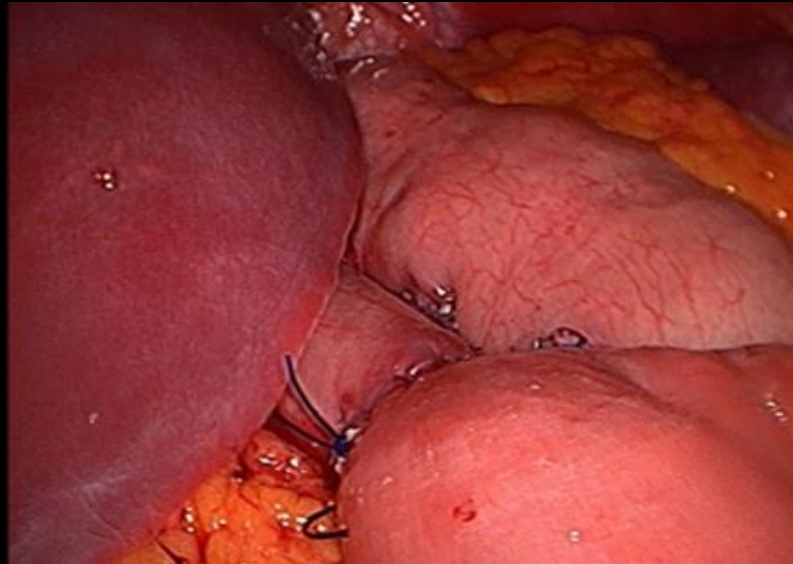


DR MOHAMMAD TALEBPOUR
PROF OF TUMS



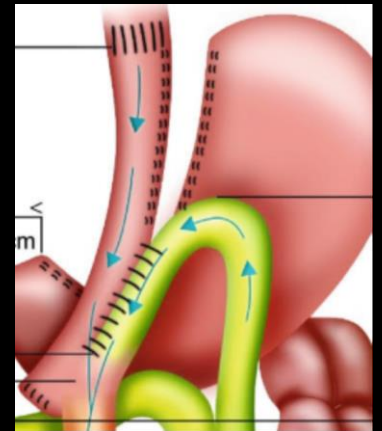
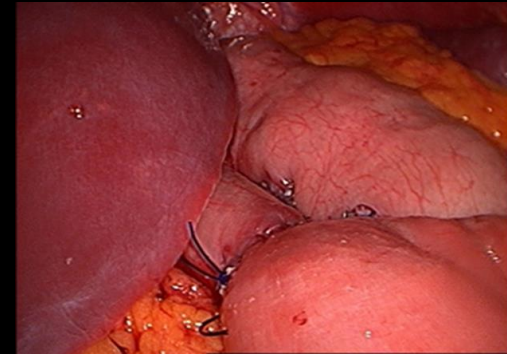
TYPES OF ANASTOMOSIS BETWEEN POUCH AND JEJUNUM

- Side to side, stapler
- Side to Side, hand sewn
- End to side, hand sewn



ENDOSCOPIC BILE FLOW ASSESSMENT IN TWO BELOW GROUPS (ASYMPTOMATIC)

- **G1:** Hand sewn end to side
Pouches at the level of incisura
The length of anastomosis is 2 cm.
- **G2:** Side to side
Pouches at the level of Crow's food nerve about 5 cm distal to incisura
The length of anastomosis is about 5 cm.
- **Endoscopy:**
Rate of bile existence,
Edema or ulcer at the level of anastomosis, pouch and esophagus
One expert endoscopic man.
Documented by pictures.



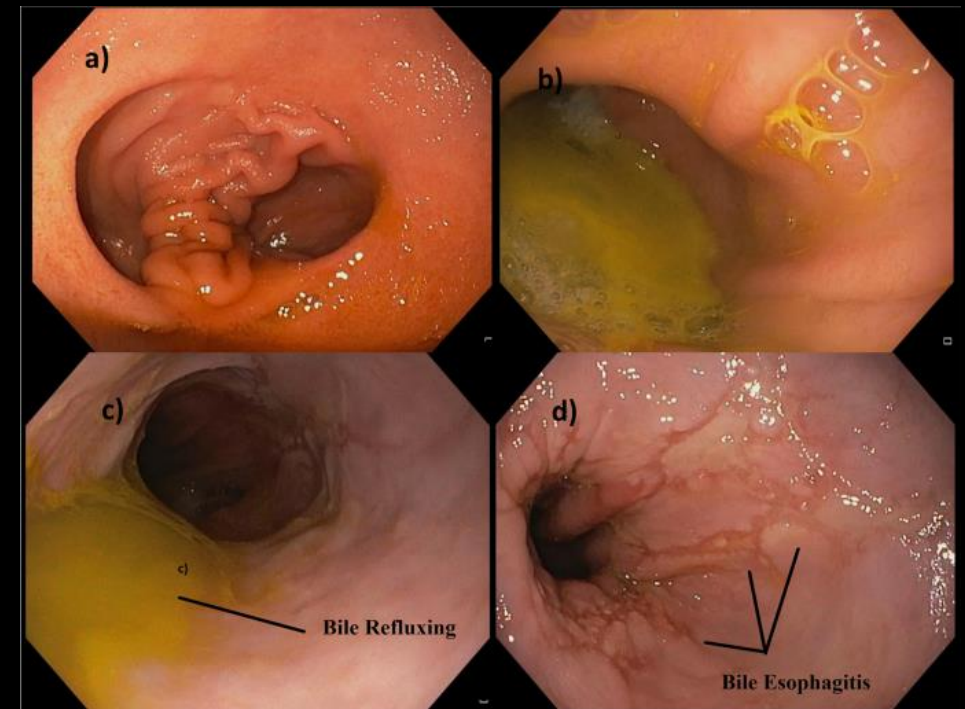
RESULT

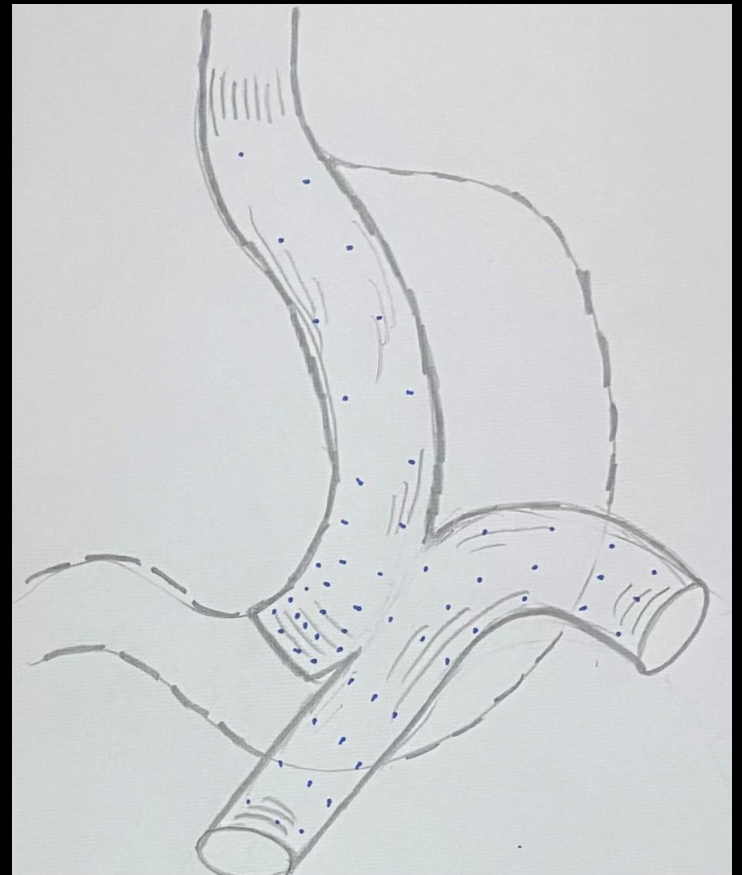
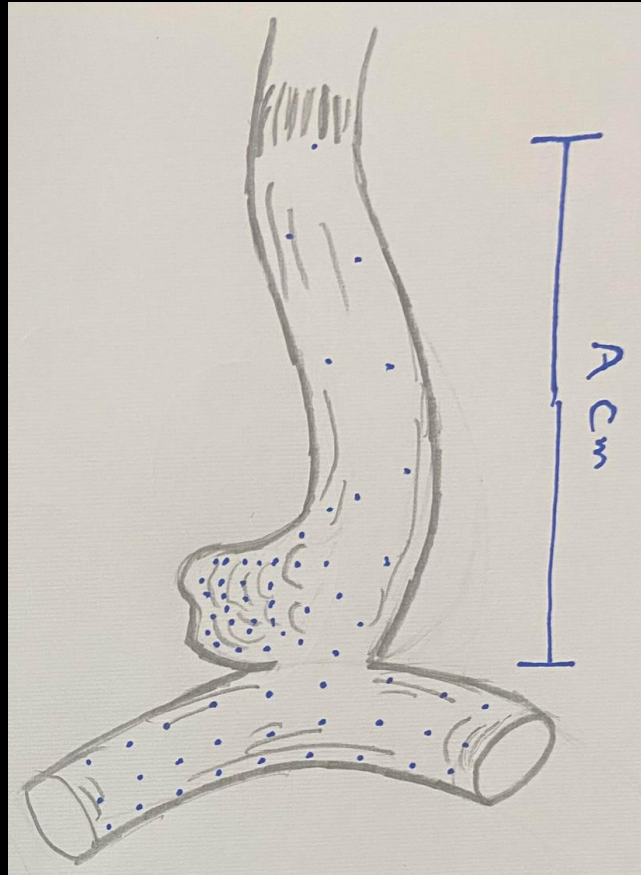
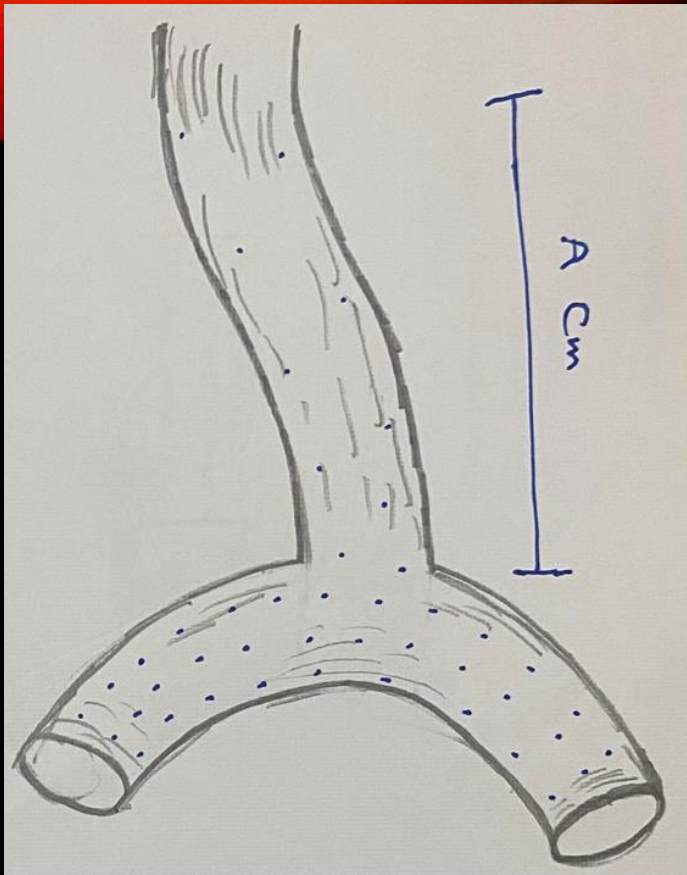
- **10** cases in each group
- All of patients were **asymptomatic** (any reflux or epigastric pain).
-
- Endoscopy data documented by pictures as well and it collected in **Minimally invasive surgery research Center, Sina Hospital.**
- BMI of both groups was **45.5/46** in G1/G2.
- **F/M**: 6/5, 5/5 in G1, G2



RESULT

- Existence of **bile in pouch** was **3/5** in G1/G2.
- **Edema at pouch** was **2/5** in G1/G2.
- **Ulcer** at pouch was **0/1** in G1/G2.
- **Edema at anastomosis** was **3/5** in G1/G2.
- **Marginal ulcer** was **0/0** in G1/G2.
- **Bile in esophagus** was **1/1** in G1/G2.
- **Edema at esophagus** was **0/0** in G1/G2.





- Small hand sewn E-S anastomosis has **sphincter effect** to prevent passage of bile into pouch and esophagus in asymptomatic patients.
- As the risk of bile in pouch and esophagus is less in E-S anastomosis, it seems the rate of **bile reflux should be less** in this group.



• THANK YOU