

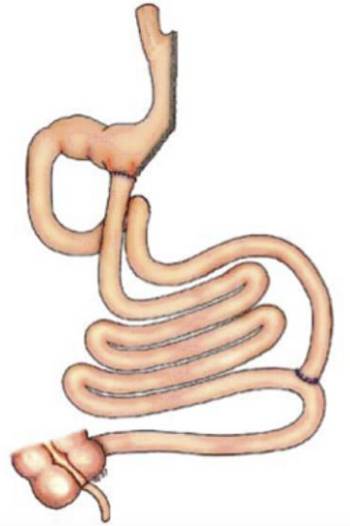
Transit bipartition and intestinal glc absorption

François Pattou

Department of Endocrine and Metabolic Surgery , CHRU Lille

UMR1190 Translational Research in Diabetes , INSERM - Univ Lille

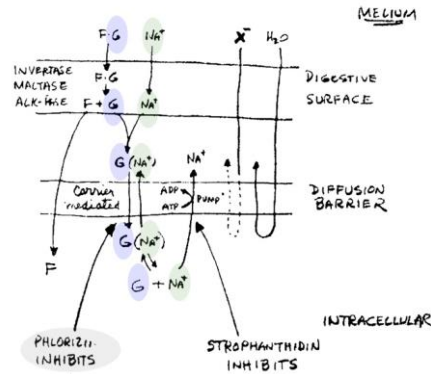
European Genomic Institute for Diabetes, Lille, France



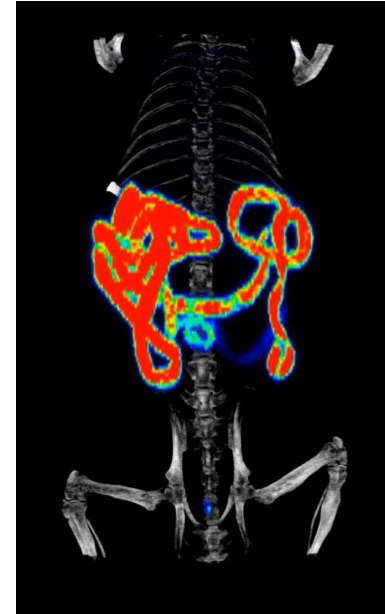
Intestinal glucose absorption

Sodium-glucose co-transporter 1

oral Fluorodeoxyglucose / TEP



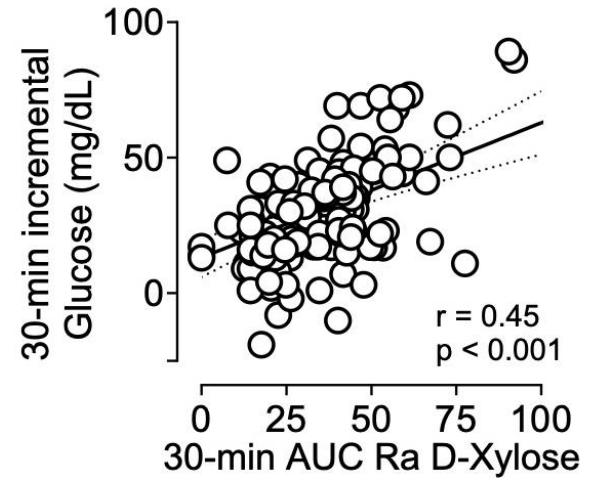
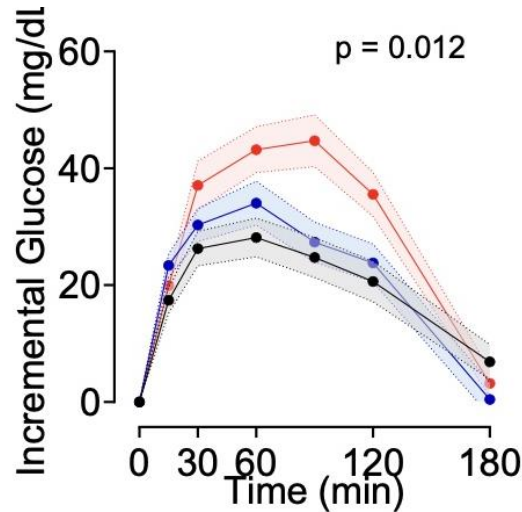
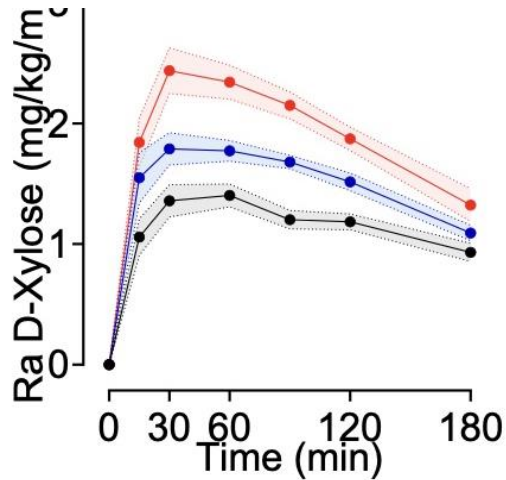
Bob Crane 1960



Lorea Zubiaga et al. *iScience* 2023

D-Xylose is a biomarker of glc absorption

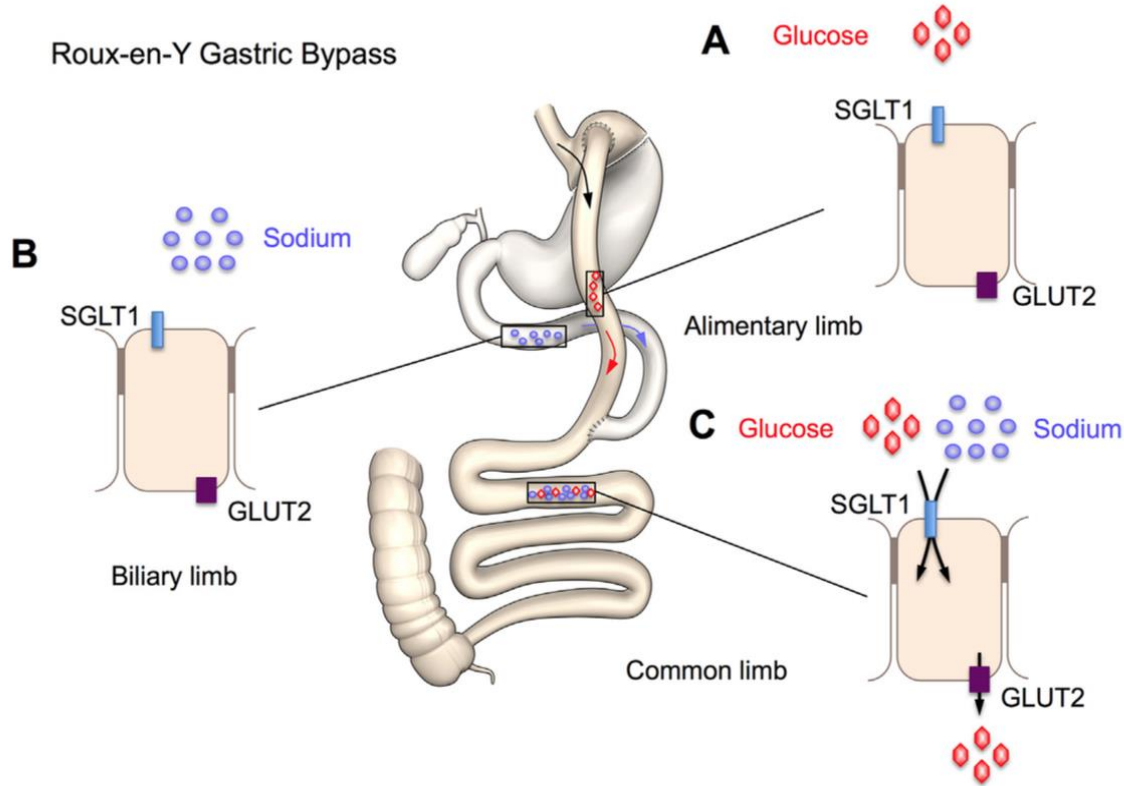
Mixed meal Xylose test in 130 patients



(Goutchtat et al (submitted))

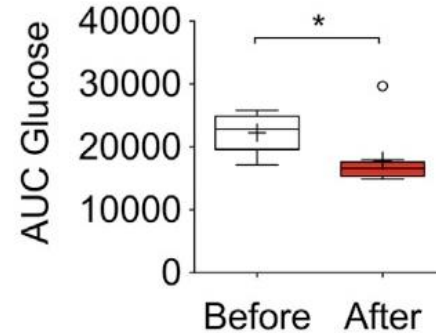
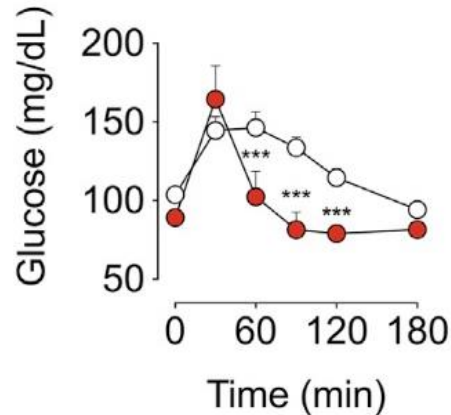
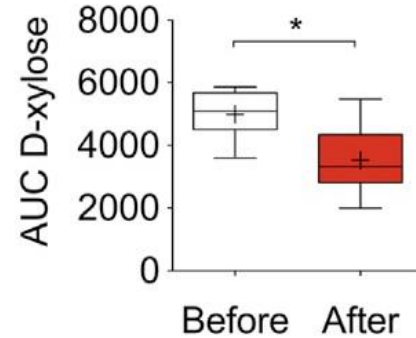
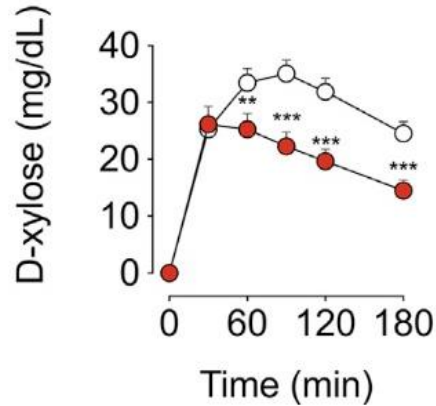
Glc is only absorbed in the Common limb

Roux-en-Y Gastric Bypass



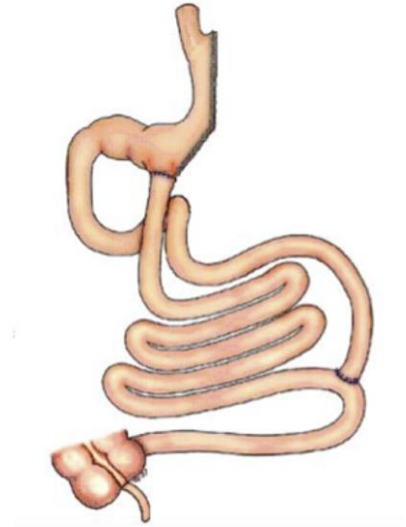
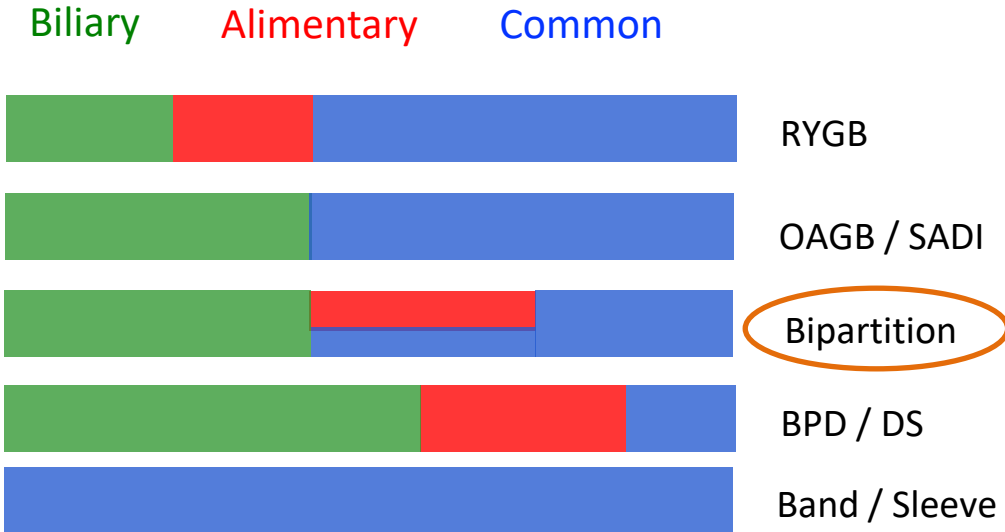
RYGB reduces intestinal glc absorption

Mixed meal
Xylose test
(n=9)



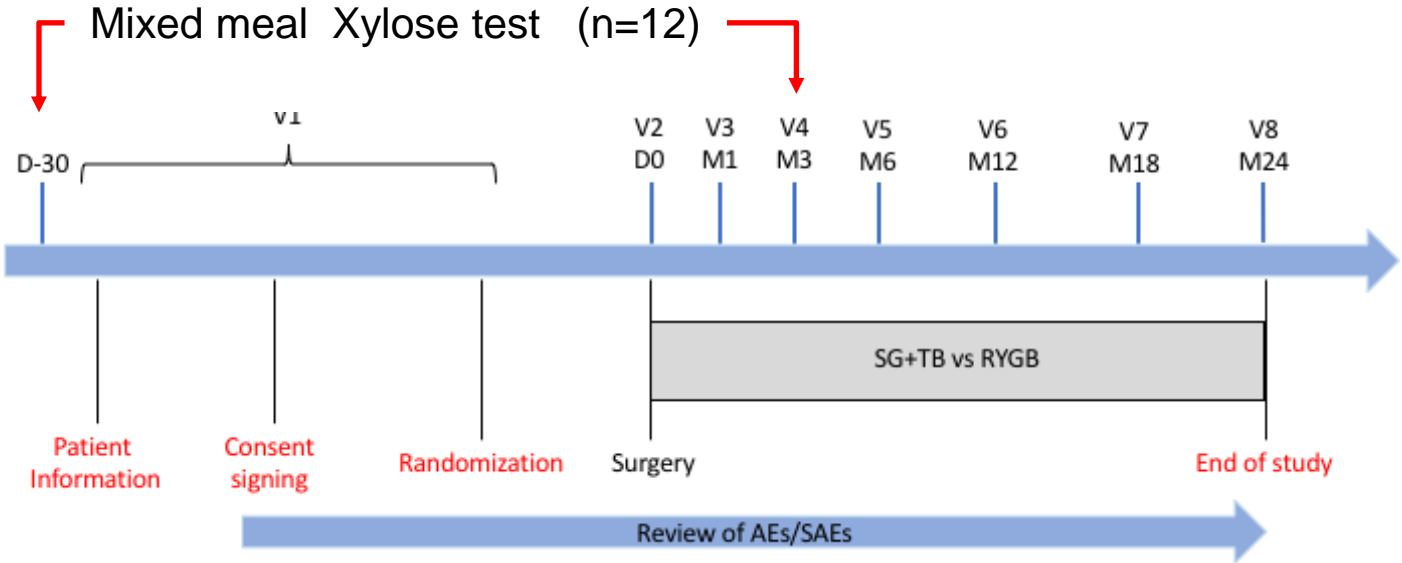
Gregory Baud et al.
Cell Metabolism 2016

Surgical gastrointestinal diversion(s)



BIPASS - Transit bipartition vs RYGBP (RCT)

Robert Caiazzo (PI)

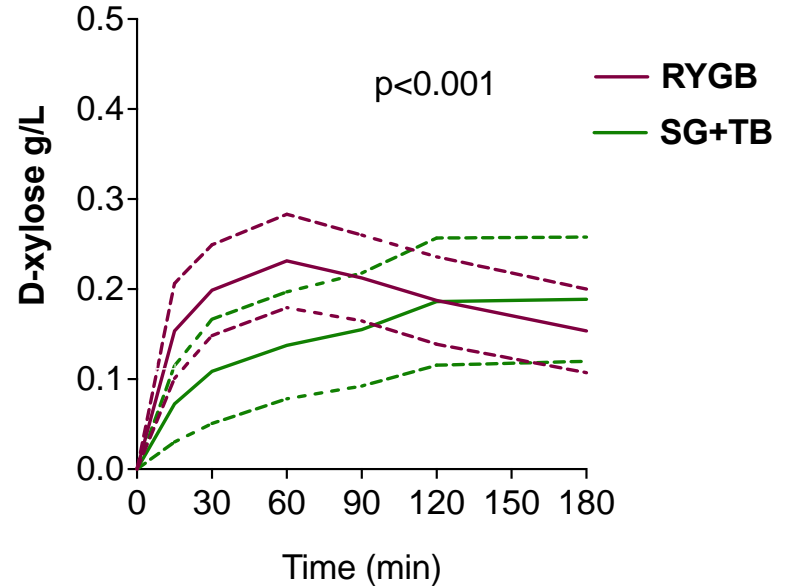
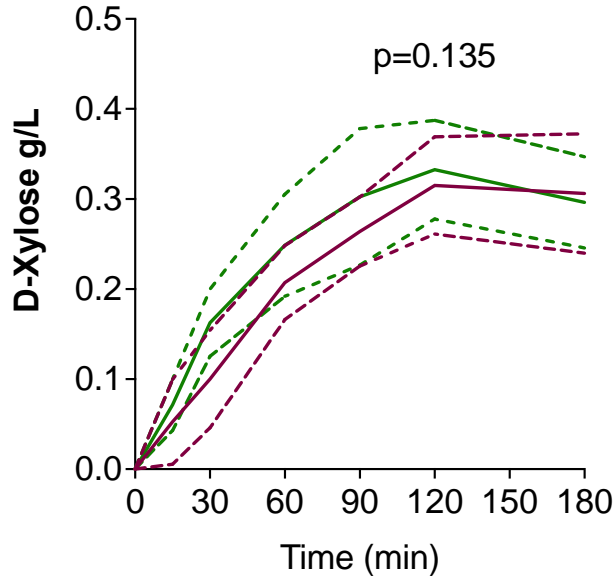


Mixed meal test : Xylose

Before surgery

(n=6 per group)

After surgery

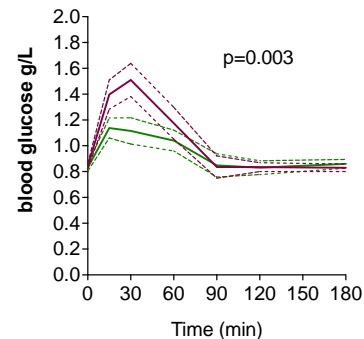
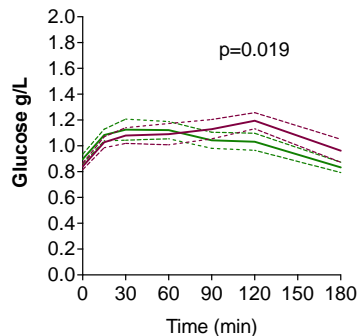


Mixed meal test : Glc response

Before surgery

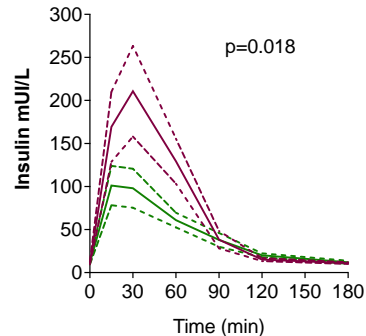
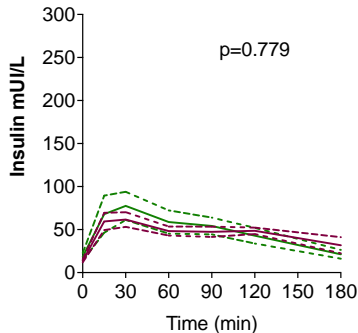
After surgery

Blood glucose



RYGB
SG+TB

Plasma insulin



Transit bipartition reduces intestinal glucose absorption

