



SleeveBypass trial

Exploring long-term quality of life after sleeve gastrectomy versus roux-en-y gastric bypass in patients with severe obesity

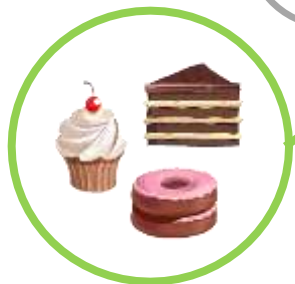
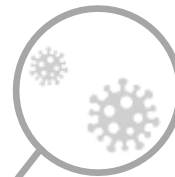
J.W.H. 't Hart, B.J. Noordman, J.F. Smulders, S. Nienhuijs, M. Dunkelgrün, J.F. Zengerink, I.A.M. Friskes, G.H.H. Mannaerts, J.A. Apers, L.U. Biter

CONFLICT OF INTEREST DISCLOSURE

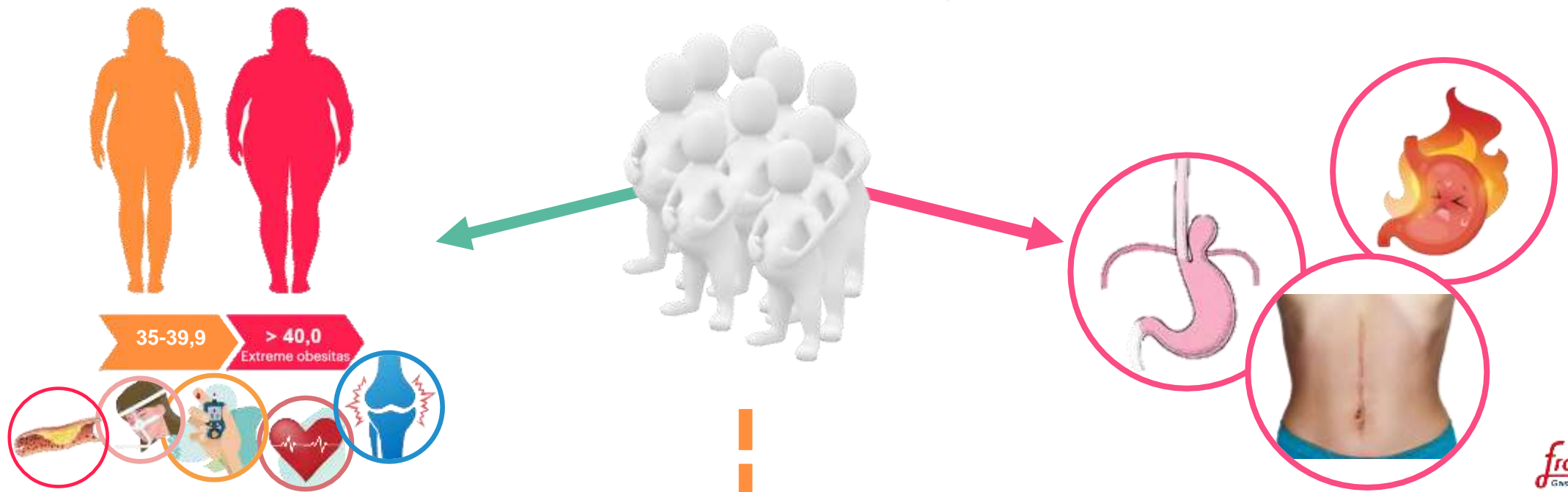
In accordance with criterion 14 of document UEMS 2016/20 “EACCME® criteria for the Accreditation of Live Educational Events (LEEs)”, all declarations of potential or actual conflicts of interest, whether due to a financial or other relationship, must be provided to the EACCME® upon submission of the application.

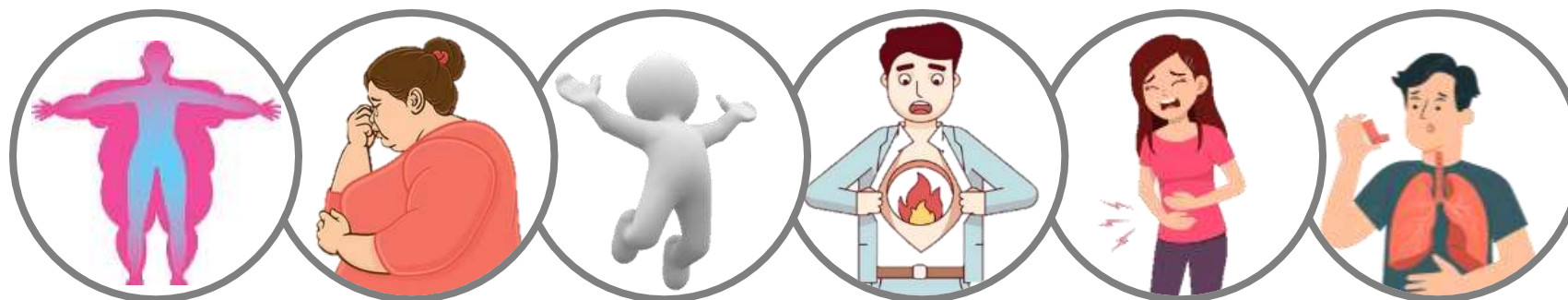
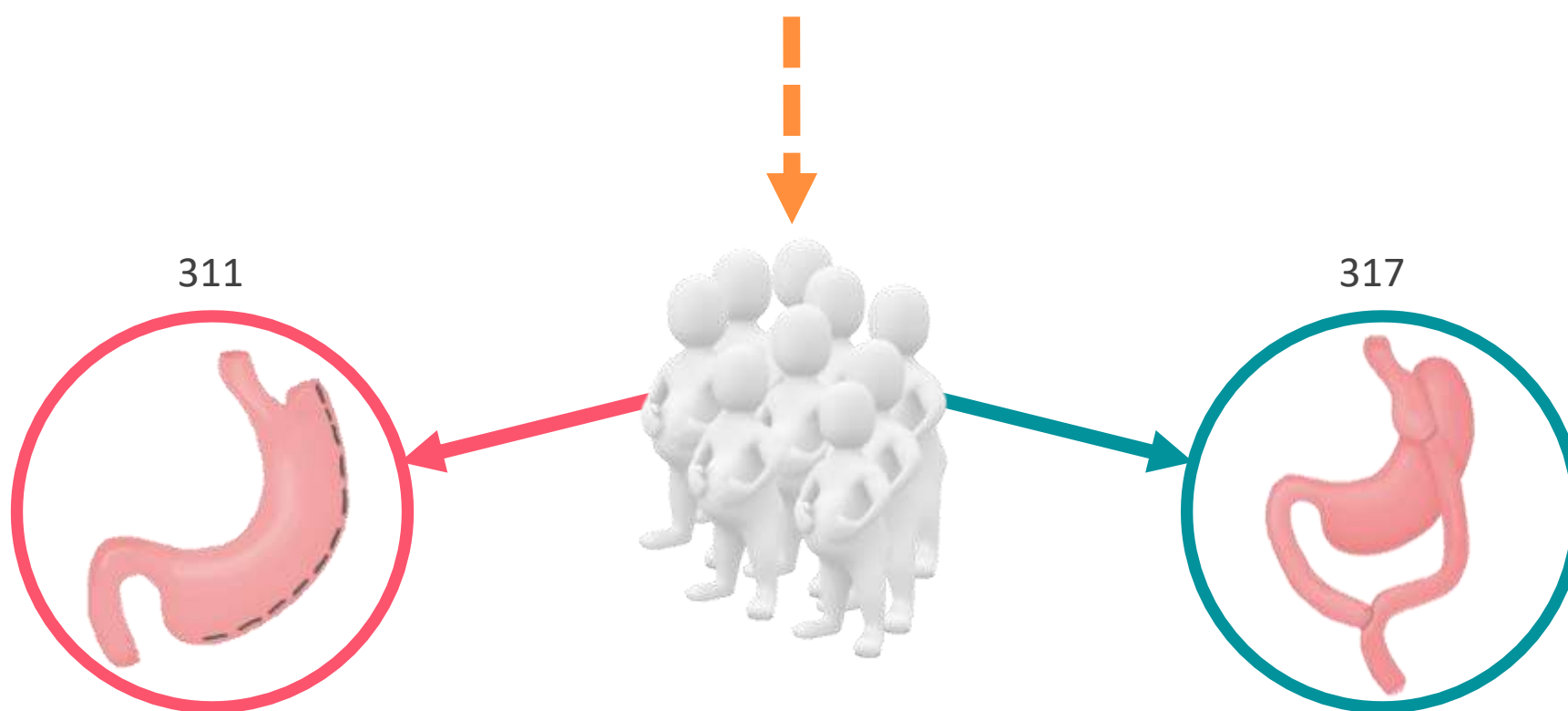
I have no potential conflict of interest to report

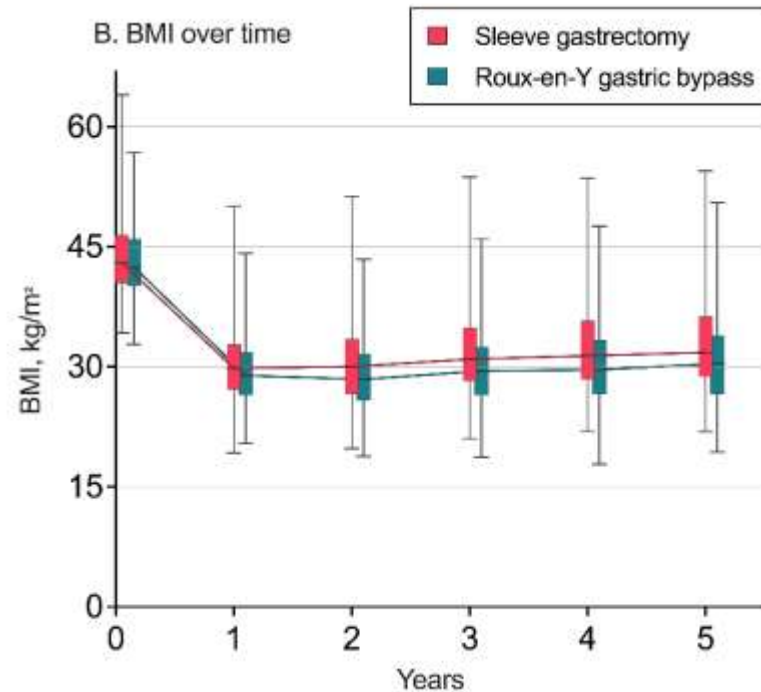
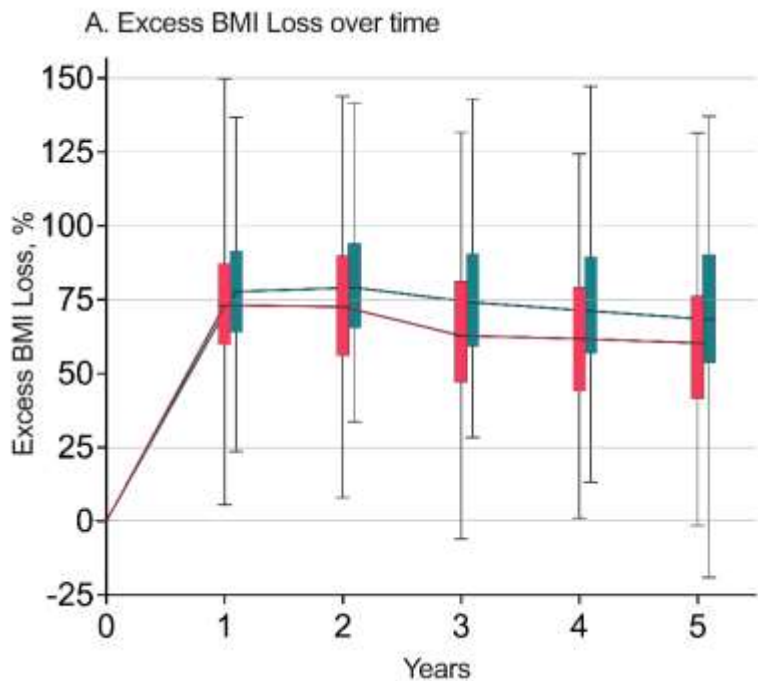




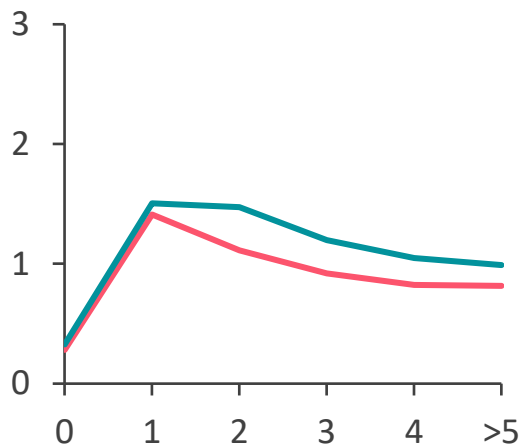
NAPOLI
2023



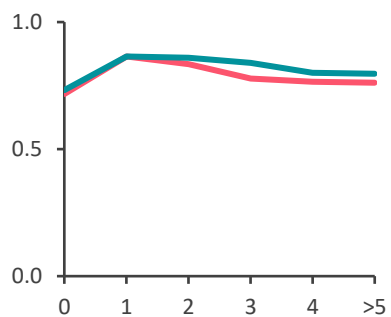




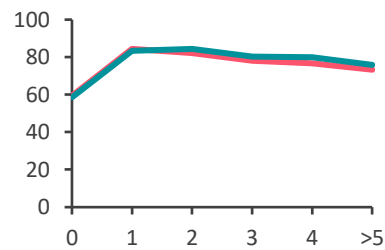
Moorehead-Aldert



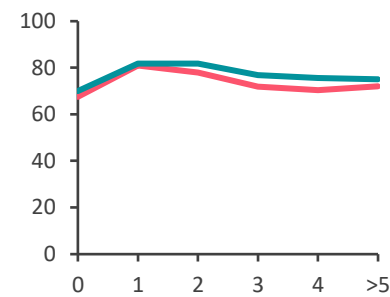
EQ-5D-3L



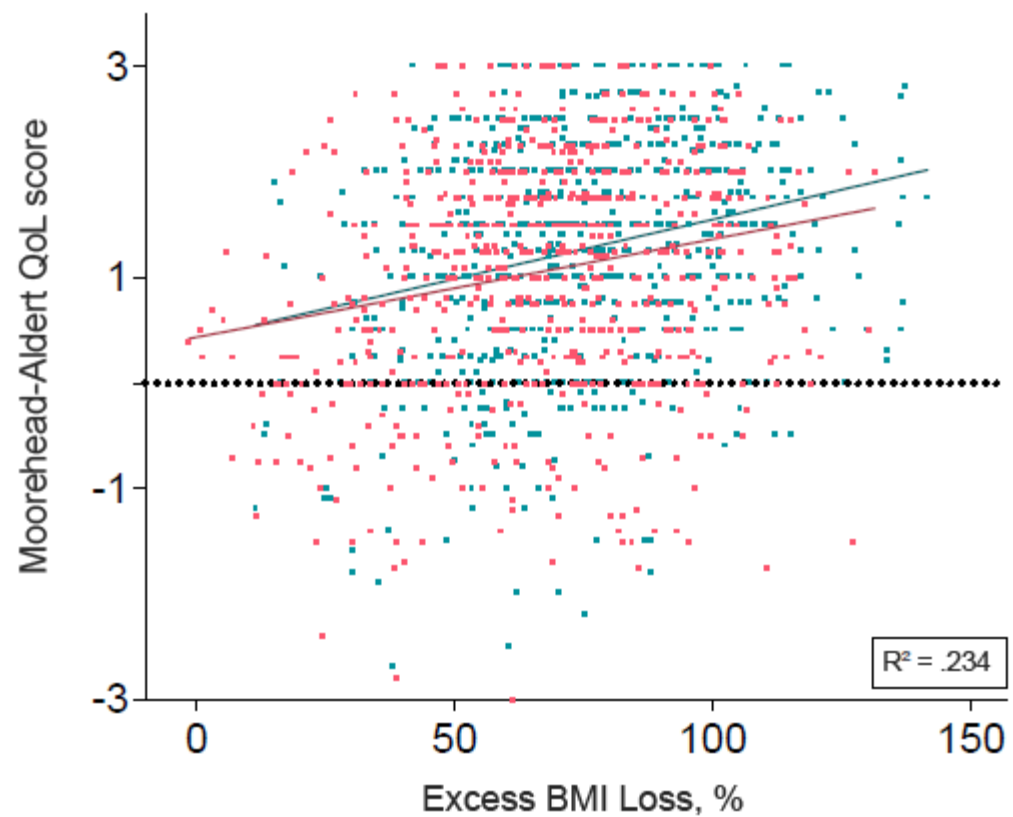
SF-36 Physical Health



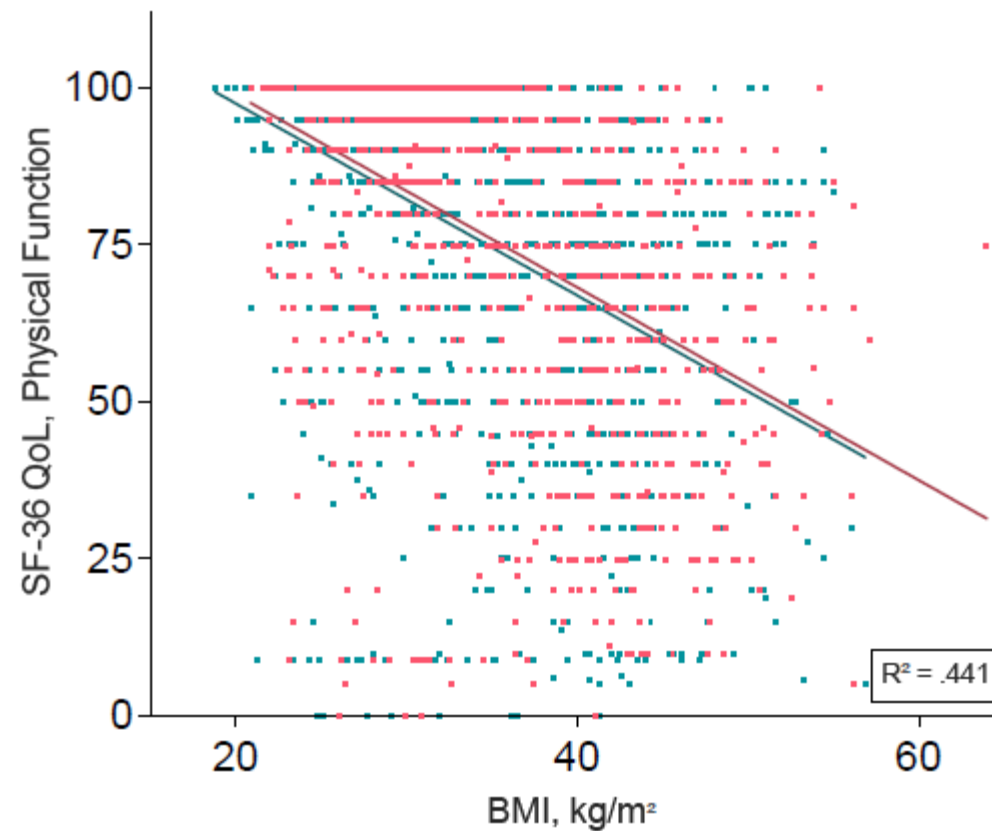
SF-36 Mental Health



C. Correlation between: Excess BMI Loss and QoL



D. Correlation between: BMI and QoL - Physical Function

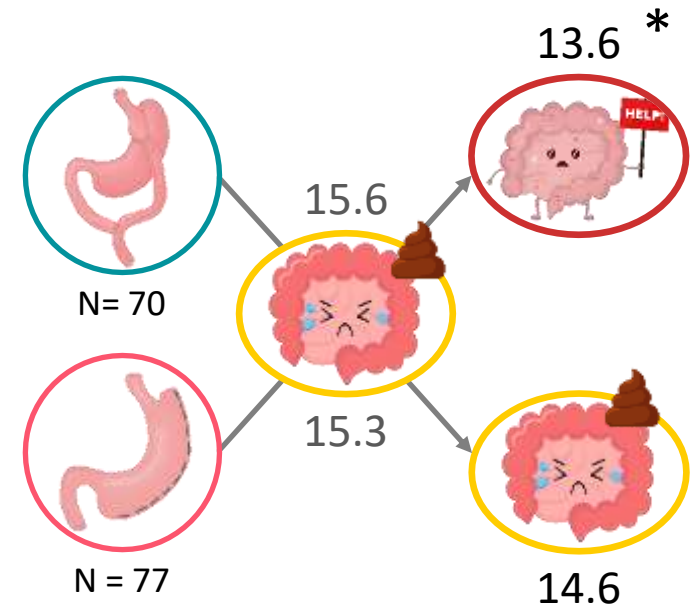
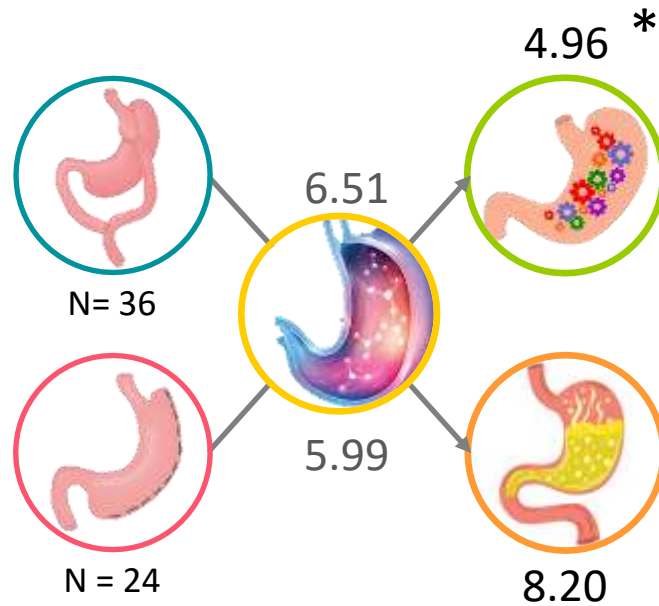
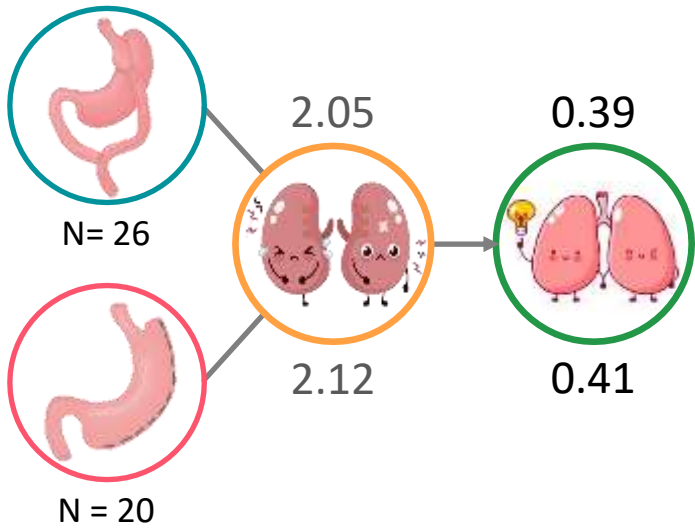


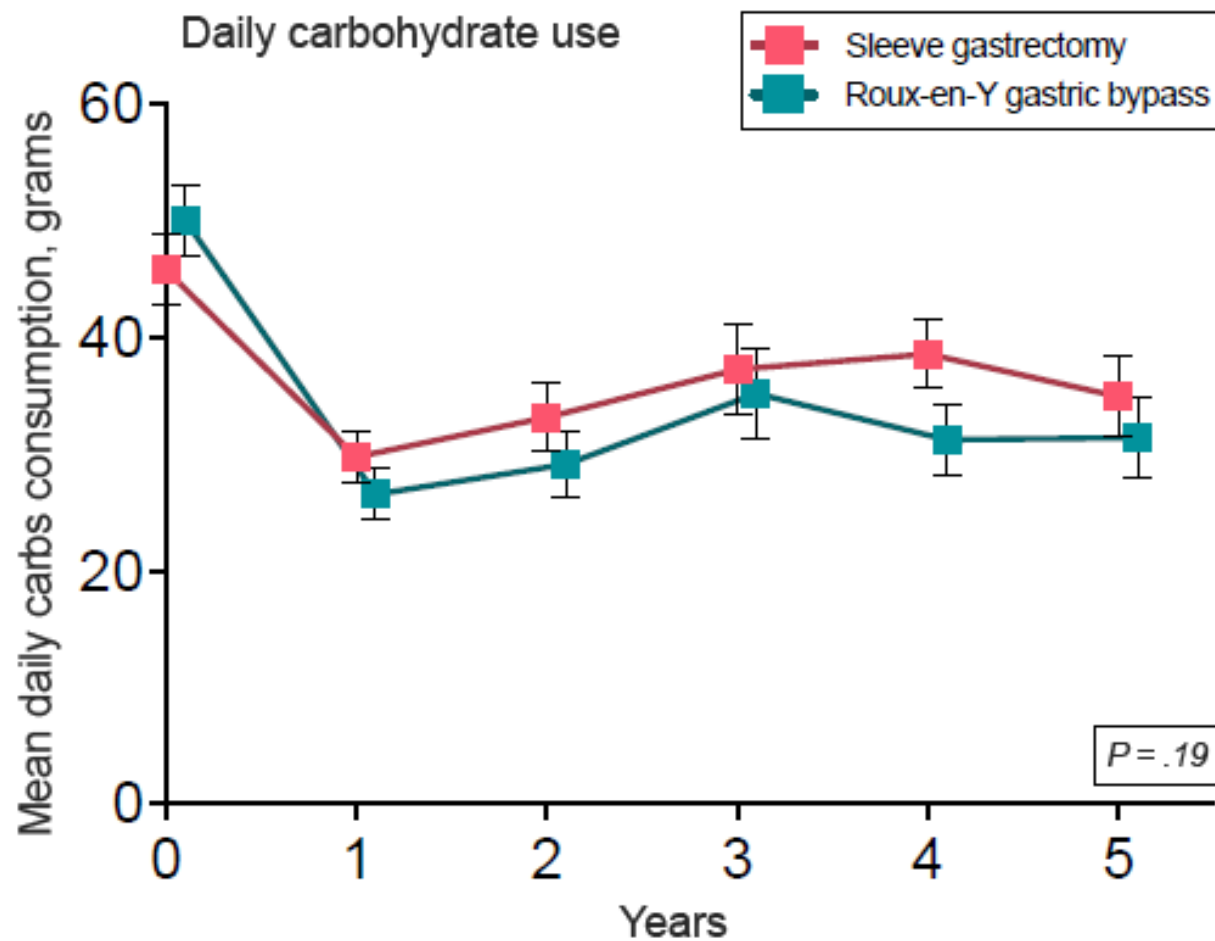


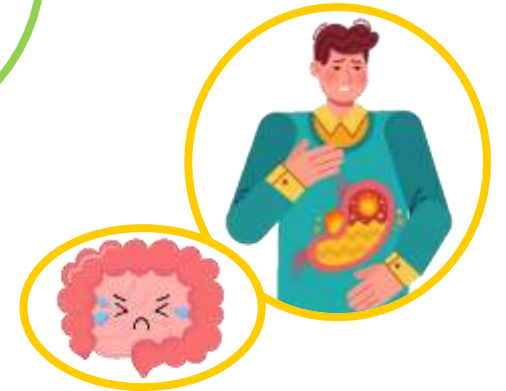
0y → 5y

0y → 5y

0y → 5y







NAPOLI
2023



NAPOLI
2023