



IFSO 2023

ENDOSCOPIC SUTURING TO MANAGE POST SLEEVE GASTRECTOMY WEIGHT RECURRENCE

Barham Abu Dayyeh, MD MPH FASGE FAGA

Director of Advanced Endoscopy

Professor of Medicine

Associate Research Chair for Innovation, Department of Medicine

Assistant Medical Director, Business Development

Mayo Clinic, Rochester MN

Abudayyeh.Barham@mayo.edu



DISCLOSURES

- **Consultant:** Boston Scientific, Metamodix, BFKW, Apollo Endosurgery, Medtronic, Endogenex
- **Cofounder:** Endogenex
- **Research Support:** Apollo Endosurgery, USGI, Endogastric Solutions, Boston Scientific, Medtronic, Spatz, Cairn.
- **Speaker:** Johnson & Johnson, Olympus, Endogastric Solutions

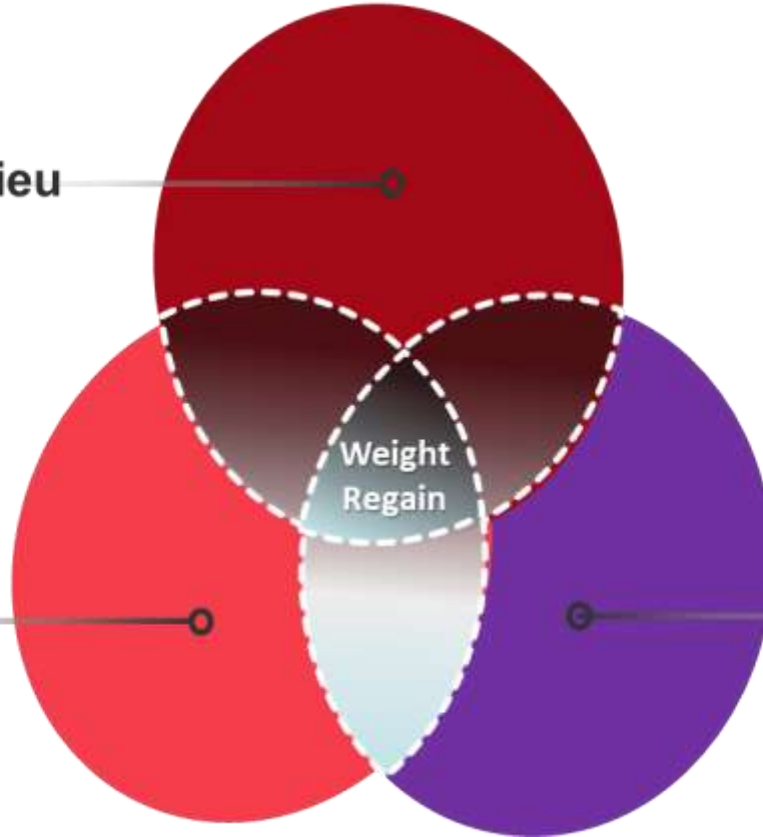
What Happens?



Genetic Milieu



Modifiable
Risk Factors



Environmental
and Psychosocial

How does the Sleeve Gastrectomy Work?

New Insights

Changes in Time of Gastric Emptying After Surgical and Endoscopic Bariatrics and Weight Loss: A Systematic Review and Meta-Analysis



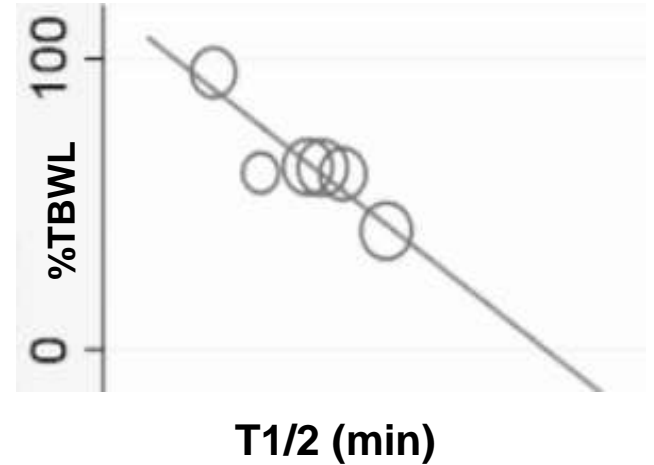
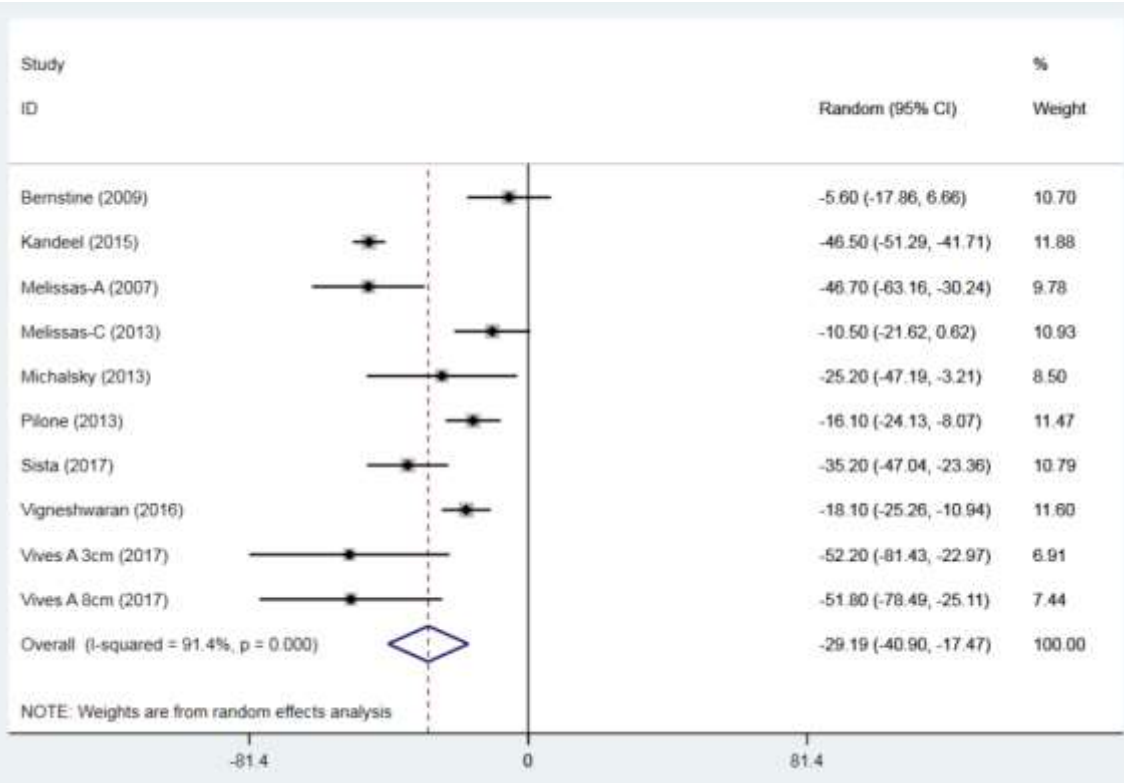
Eric J Vargas ¹, Fateh Bazerbachi ¹, Gerardo Calderon ¹, Larry J Prokop ²,
Victoria Gomez ³, M Hassan Murad ⁴, Andres Acosta ¹, Michael Camilleri ⁵,
Barham K Abu Dayyeh ⁶

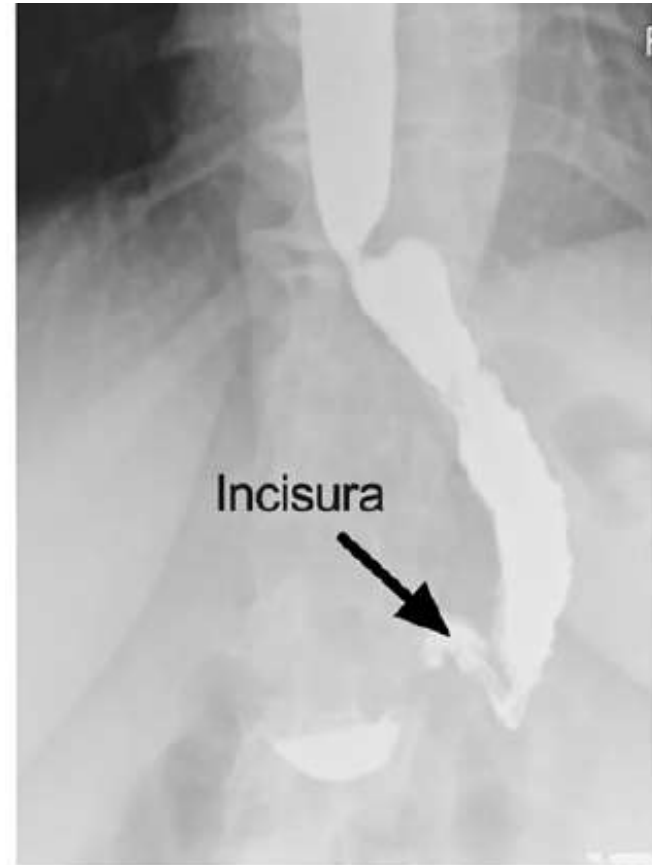
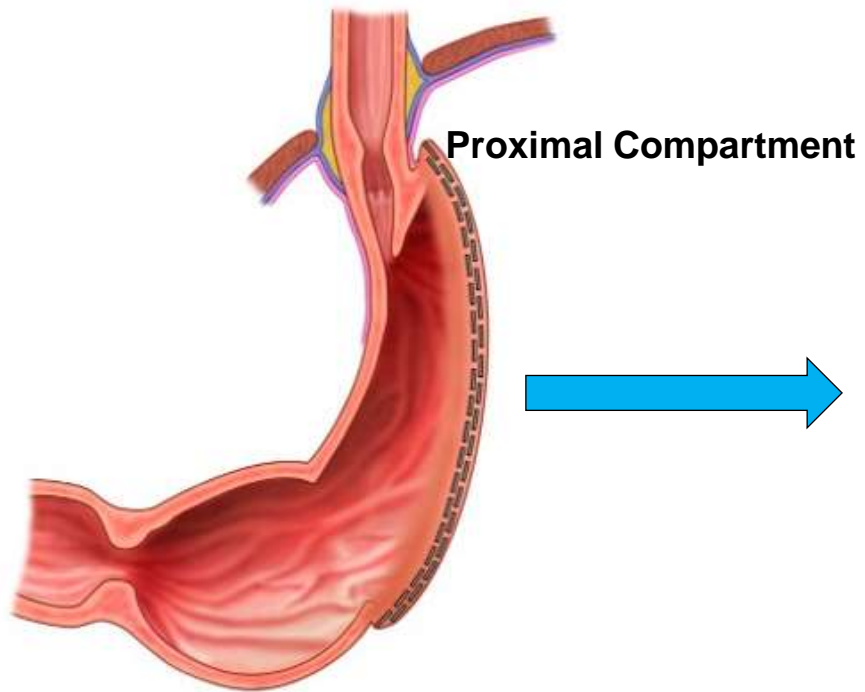
Affiliations + expand

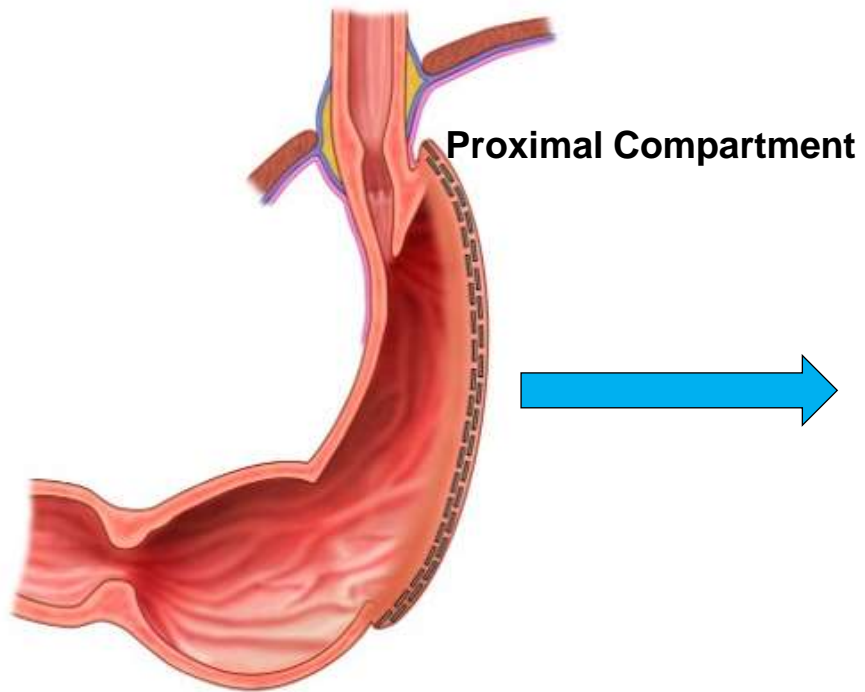
PMID: 30954712 PMID: PMC6776718 DOI: 10.1016/j.cgh.2019.03.047

How does the Sleeve Gastrectomy Work?

Accelerates Gastric Emptying

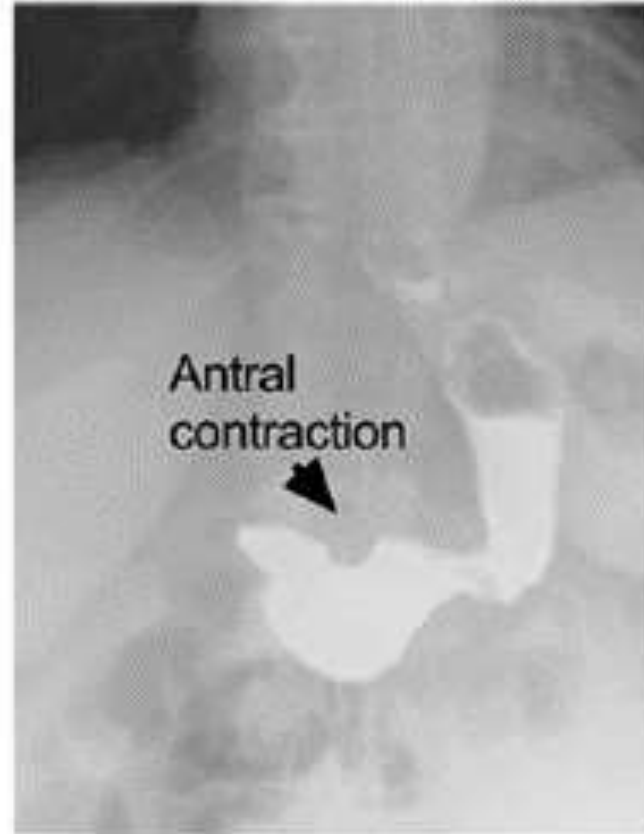


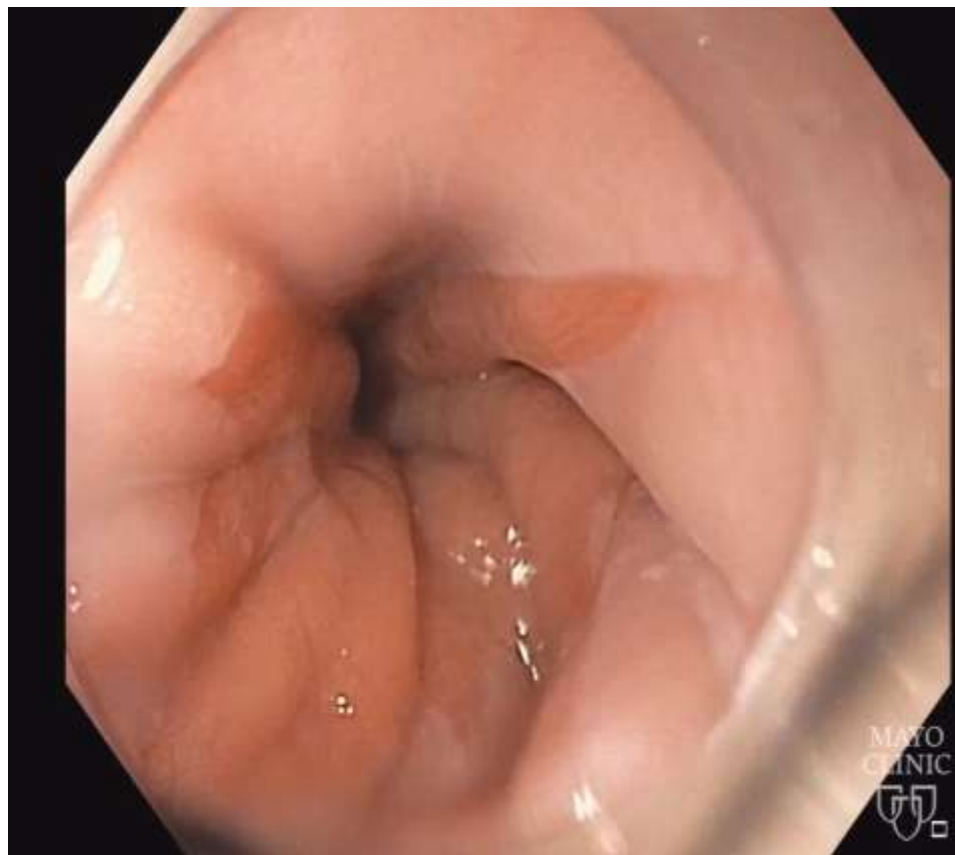
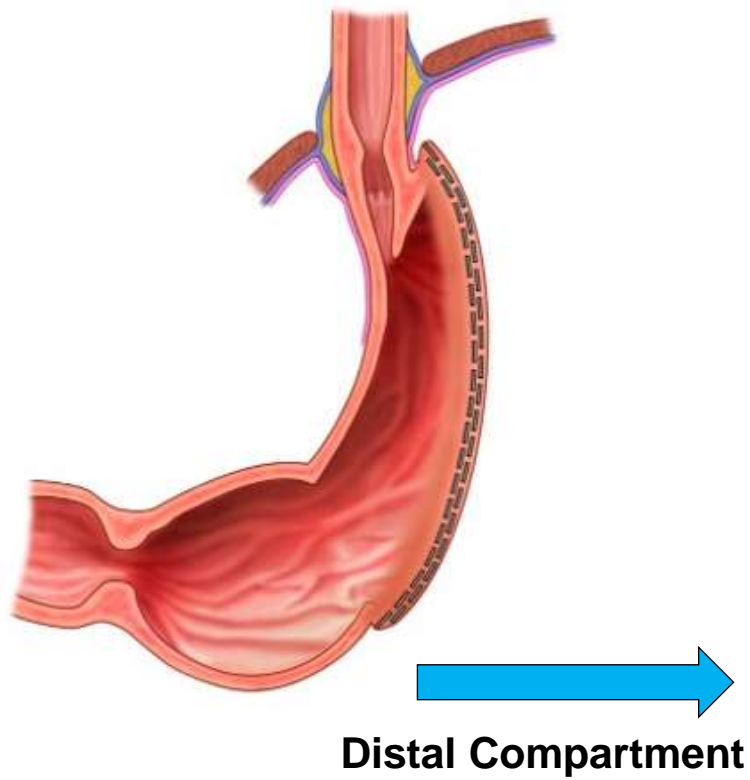




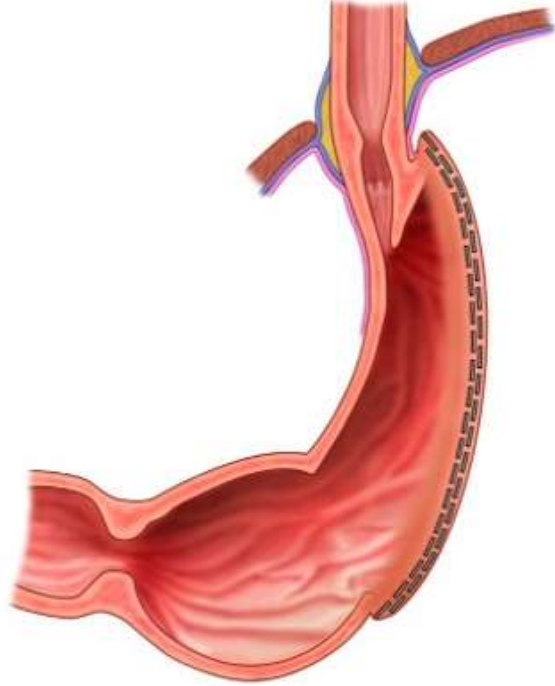


Distal Compartment





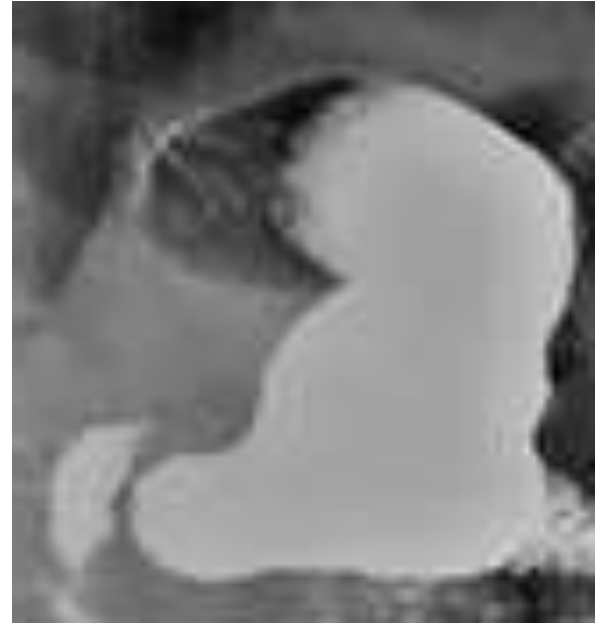
Phenotype 1 for Weight Recurrence: **Loss of acceleration**



Proximal Compartment Dilates

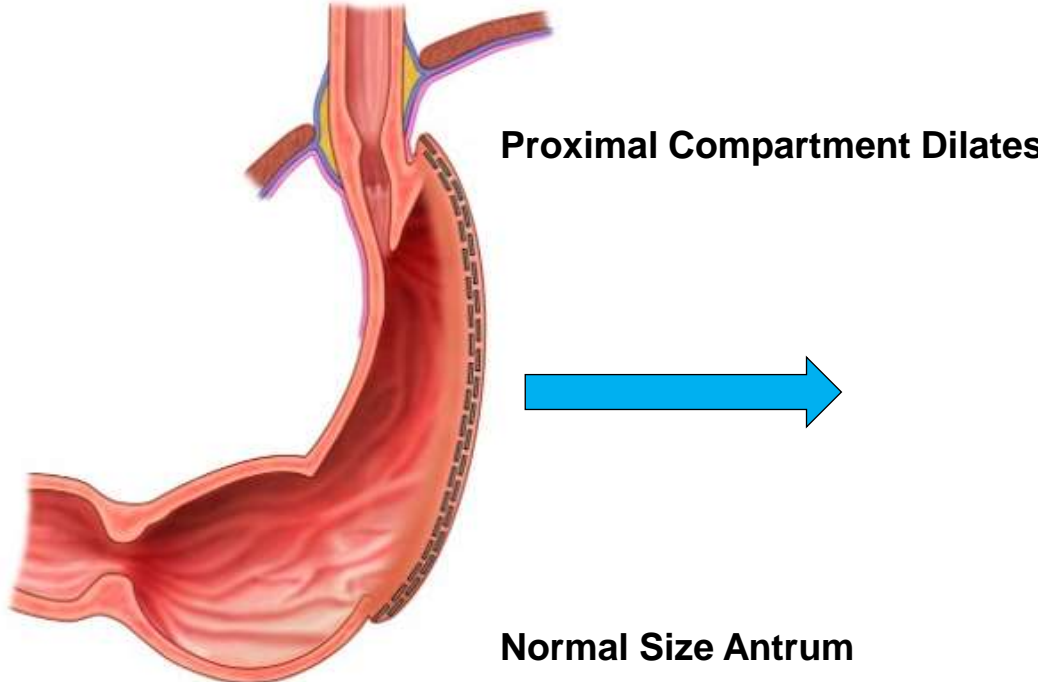


Normal Size Antrum

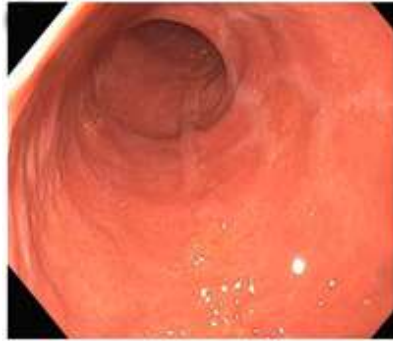


Phenotype 1 for Weight Recurrence

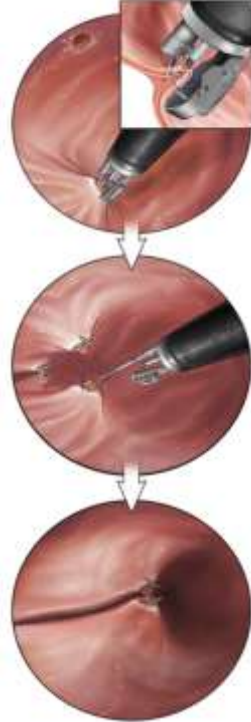
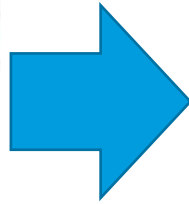
Loss of acceleration



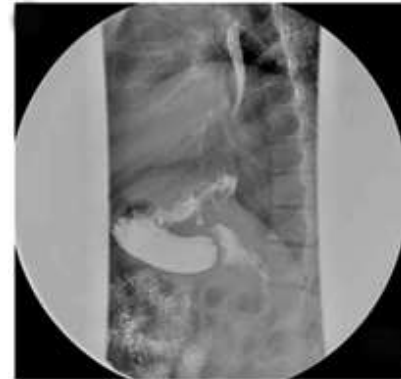
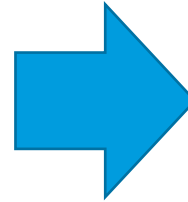
Revisional Endoscopic Sleeve Gastroplasty (R-ESG)



Before R-ESG

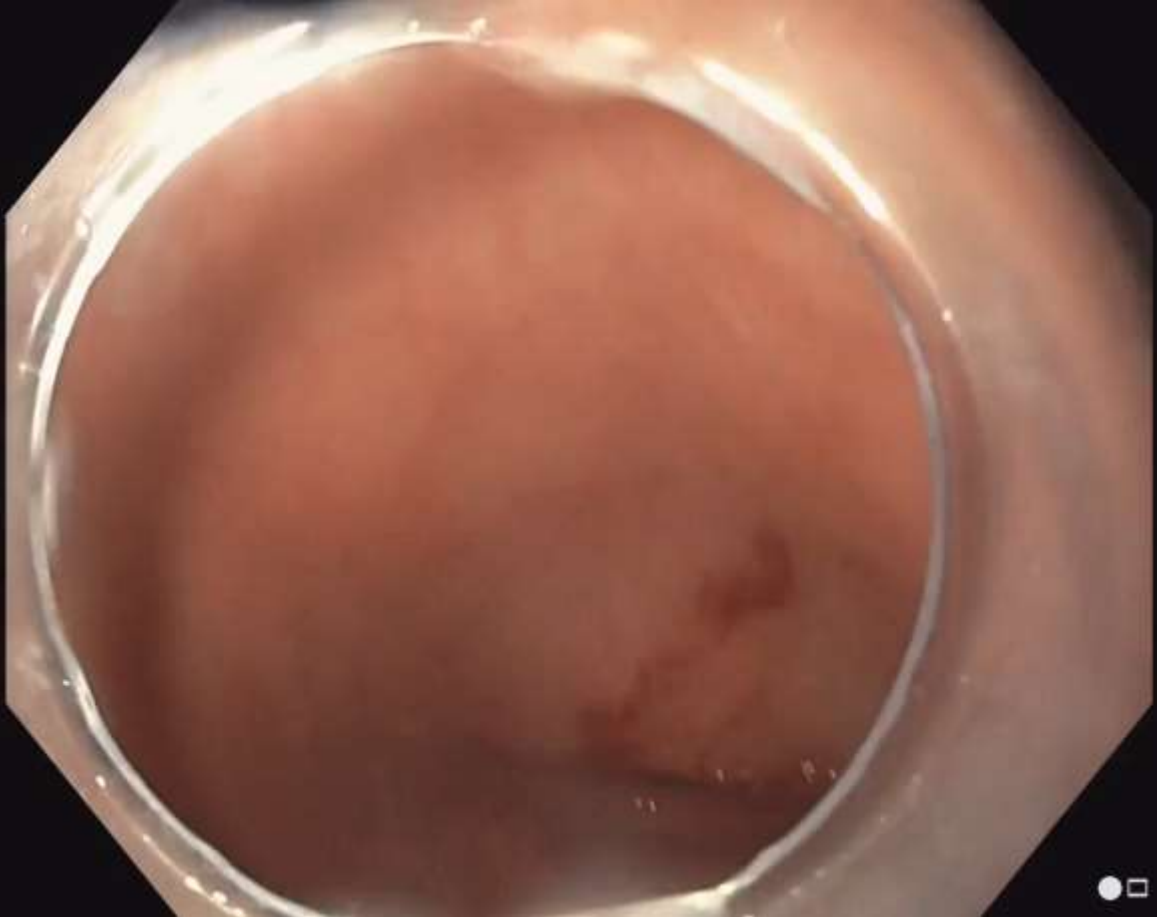


R-ESG: full-thickness endoscopic suturing



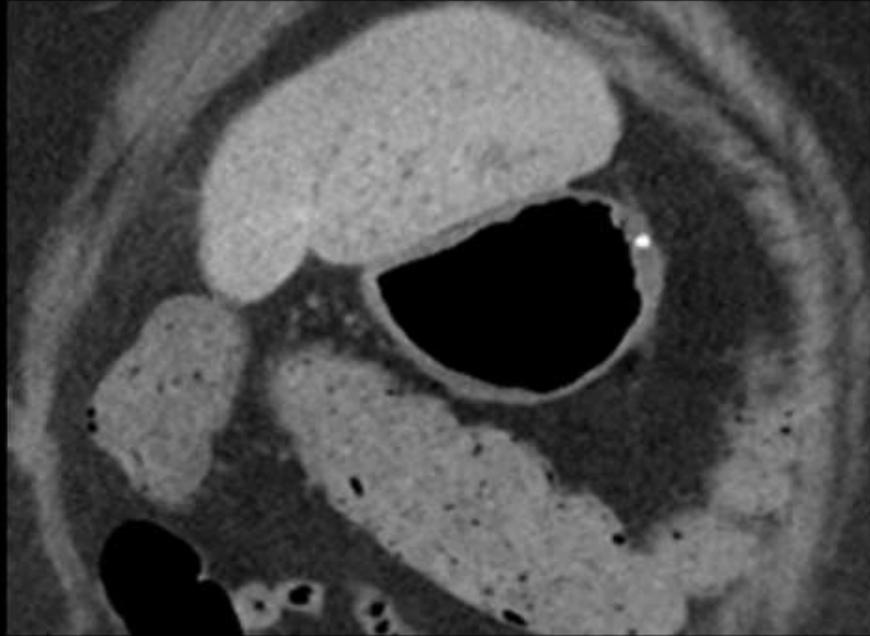
4 weeks after R-ESG

Revisional Endoscopic Sleeve Gastroplasty (R-ESG)

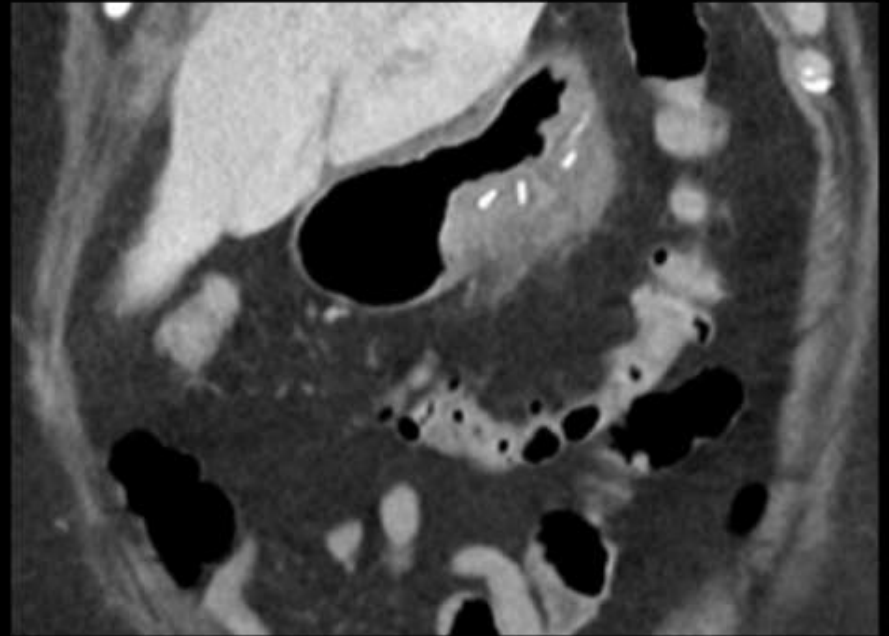


Phenotype 2 for Weight Recurrence:

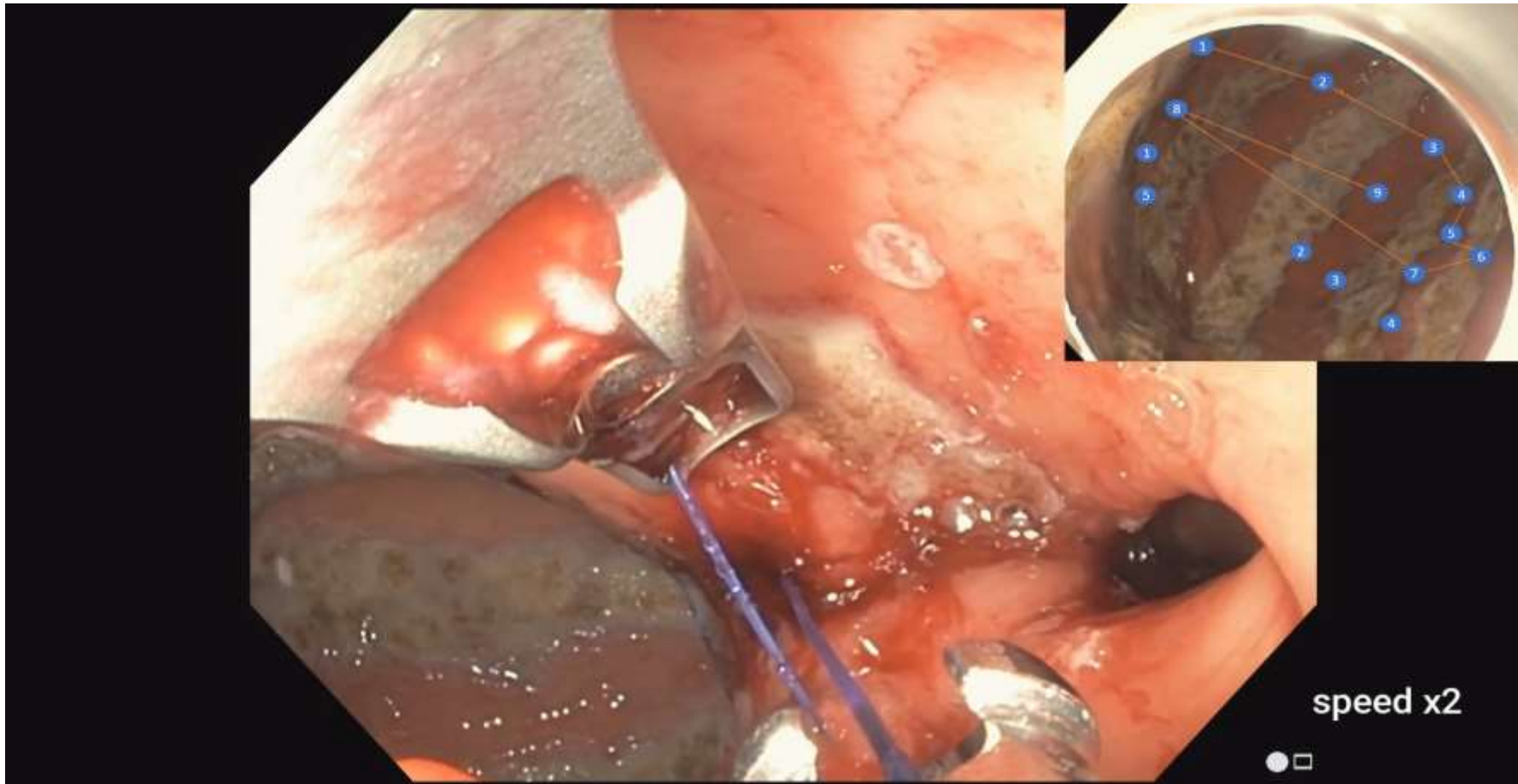
Antral dilation with weakening of antral pump



Before



After



speed x2



Revisional endoscopic sleeve gastroplasty of laparoscopic sleeve gastrectomy: an international, multicenter study



Daniel B Maselli ¹, Aayed R Alqahtani ², Barham K Abu Dayyeh ¹, Mohamed Elahmedi ², Andrew C Storm ¹, Reem Matar ¹, Jose Nieto ³, Andre Teixeira ⁴, Maryam Al Khatry ⁵, Manoel Galvao Neto ⁶, Vivek Kumbhari ⁷, Eric J Vargas ¹, Veeravich Jaruvongvanich ¹, Manpreet S Mundi ⁸, Ameya Deshmukh ³, Mohamad I Itani ⁷, Jad Farha ⁷, Christopher G Chapman ⁹, Reem Sharaiha ¹⁰

Conclusions

- 1- Not all weight recurrence after LSG is the same
- 2- Think before choosing the best approach
- 3- Utilize endoscopic revision if one of three Phenotypes
 - **Proximal dilation** - accelerate emptying with R-ESG
 - **Antral dilation** - delay emptying with R-ESG
 - **Mixed** - R-ESG proximally and distally restriction
- 4- Normal LSG or failed endoscopy – RYGB

QUESTIONS

