



University of Sydney

# Patients with diabetes require more stapler reloads per bariatric procedure

IFSO Melbourne; Sept 2024

---

**Joel Rabindran**

Bariatric Fellow Box Hill Hospital, Melbourne

**David Martin**

Upper GI Surgeon Concord, Royal Prince Alfred & Strathfield Private Hospitals University of Sydney

Chair of the Sydney Upper GI Surgical Society

Head of Upper GI and Bariatric Surgery Strathfield Private Hospital

Executive Board. Australian and New Zealand Oesophago-Gastric Surgical Association (2015-2024)

Juliane Hafermann, Fabian Distler Coreva Scientific

XXVII IFSO World Congress

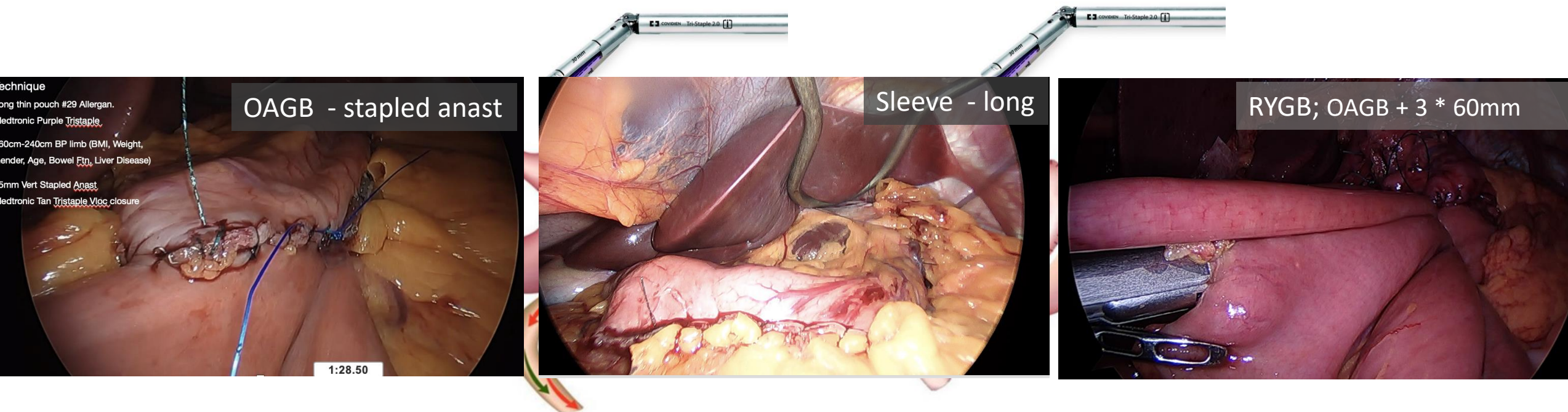


Melbourne 2024

# Patients with diabetes require more stapler reloads per bariatric procedure

David Martin (Strathfield Private Hospital, USYD)

## MBS procedures use surgical stapling



**Aim:** Identify factors that influence the number of stapler reloads required to complete an MBS procedure

Figure adapted from Sauter ER, Heckman-Stoddard B. Metabolic Surgery and Cancer Risk: An Opportunity for Mechanistic Research. *Cancers*. 2021; 13(13):3183. <https://doi.org/10.3390/cancers13133183> under the terms and conditions of the Creative Commons Attribution (CC BY) license (<https://creativecommons.org/licenses/by/4.0/>)

# Methodology: Multivariable regression analysis

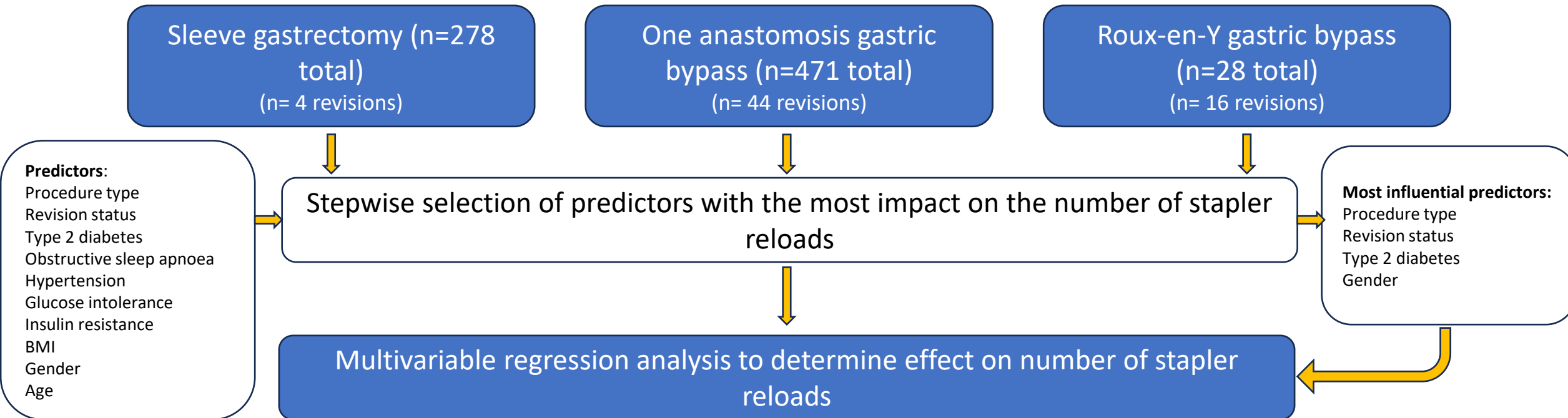
n = 777

- Multivariable regression analysis

**Setting:** Private Australian hospital, 2018 – 2023 Single Surgeon (1/5 centres used during this period)

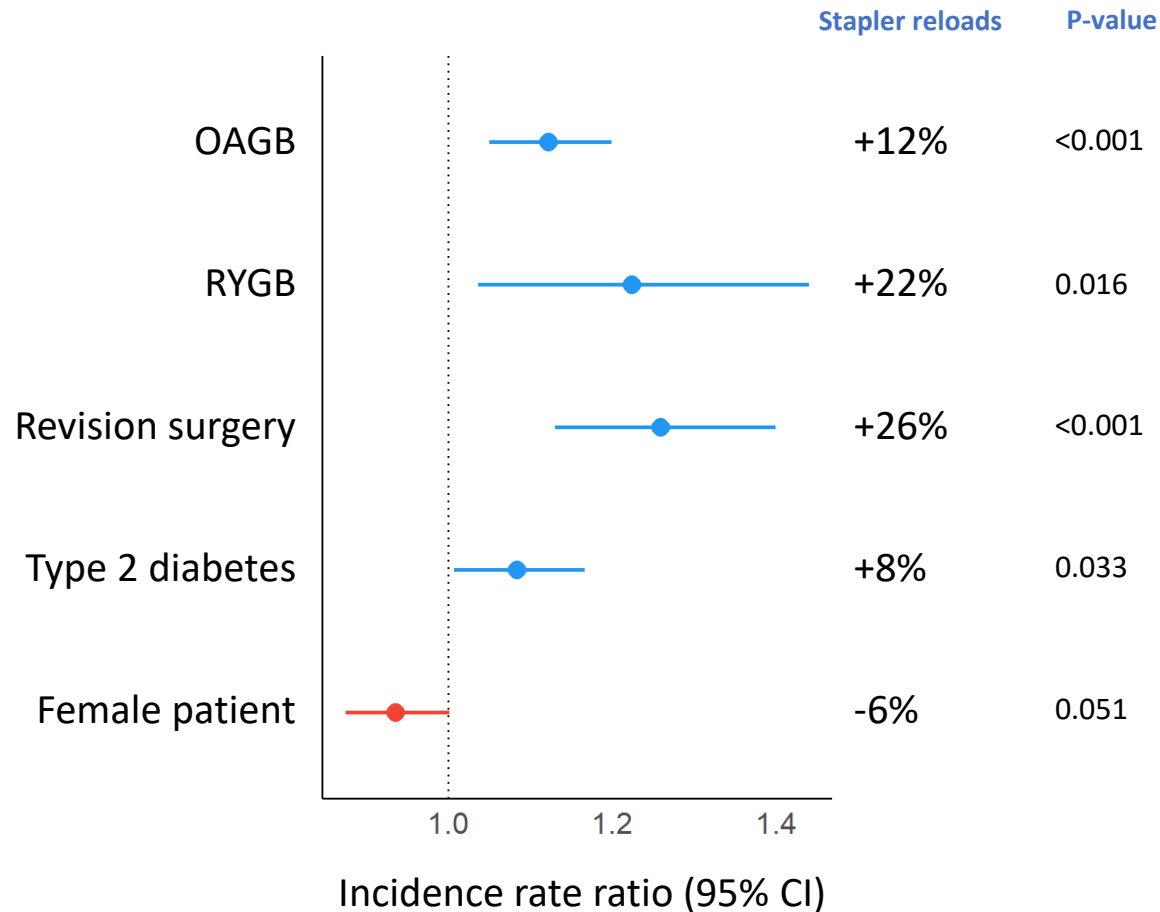
**Study type:** Retrospective analysis of prospectively collected patient data

**Surgery type:** Primary or revision MBS



# Factors influencing stapler reloads used

Surgery type and patient comorbidity influence number of reloads needed



More stapler reloads needed for

- Gastric bypass (compared to sleeve gastrectomy)
- Revisions (compared to primary surgeries)
- People with type 2 diabetes

THANK YOU