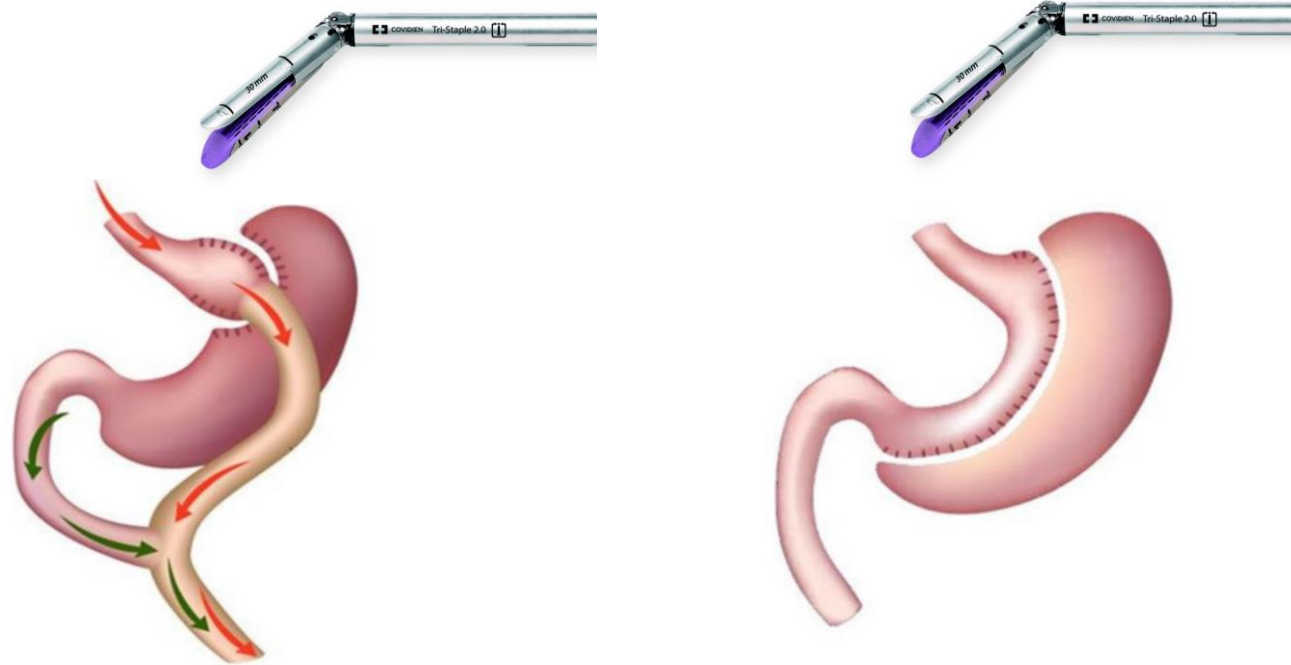


Patients with diabetes require more stapler reloads per bariatric procedure

David Martin (Strathfield Private Hospital, USYD)

MBS procedures use surgical stapling



Aim: Identify factors that influence the number of stapler reloads required to complete an MBS procedure

Figure adapted from Sauter ER, Heckman-Stoddard B. Metabolic Surgery and Cancer Risk: An Opportunity for Mechanistic Research. *Cancers*. 2021; 13(13):3183. <https://doi.org/10.3390/cancers13133183> under the terms and conditions of the Creative Commons Attribution (CC BY) license (<https://creativecommons.org/licenses/by/4.0/>)

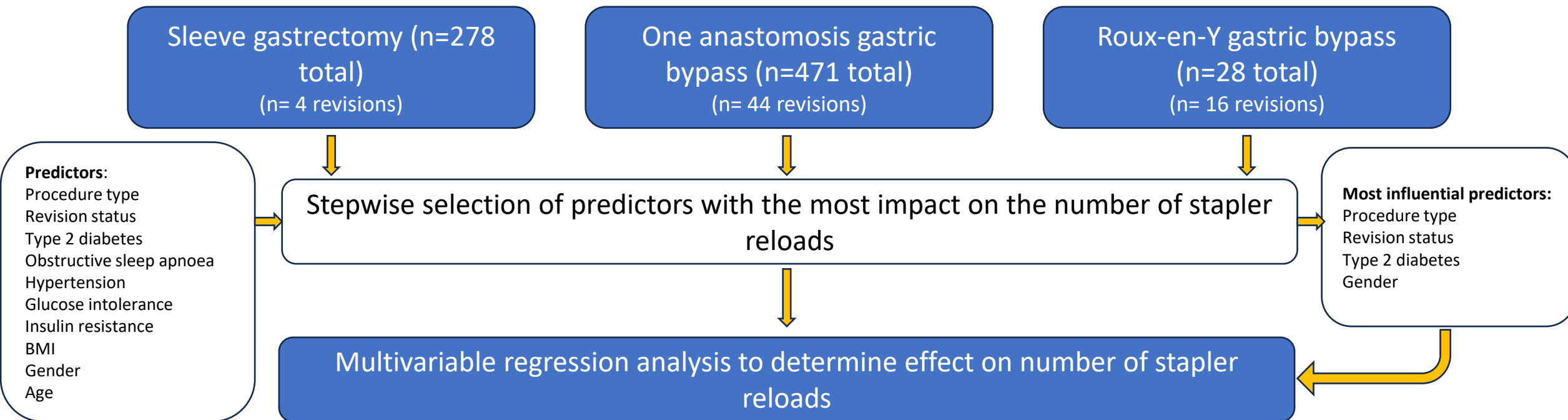
Methodology: Multivariable regression analysis

- Multivariable regression analysis

Setting: Private Australian hospital, 2018 – 2023

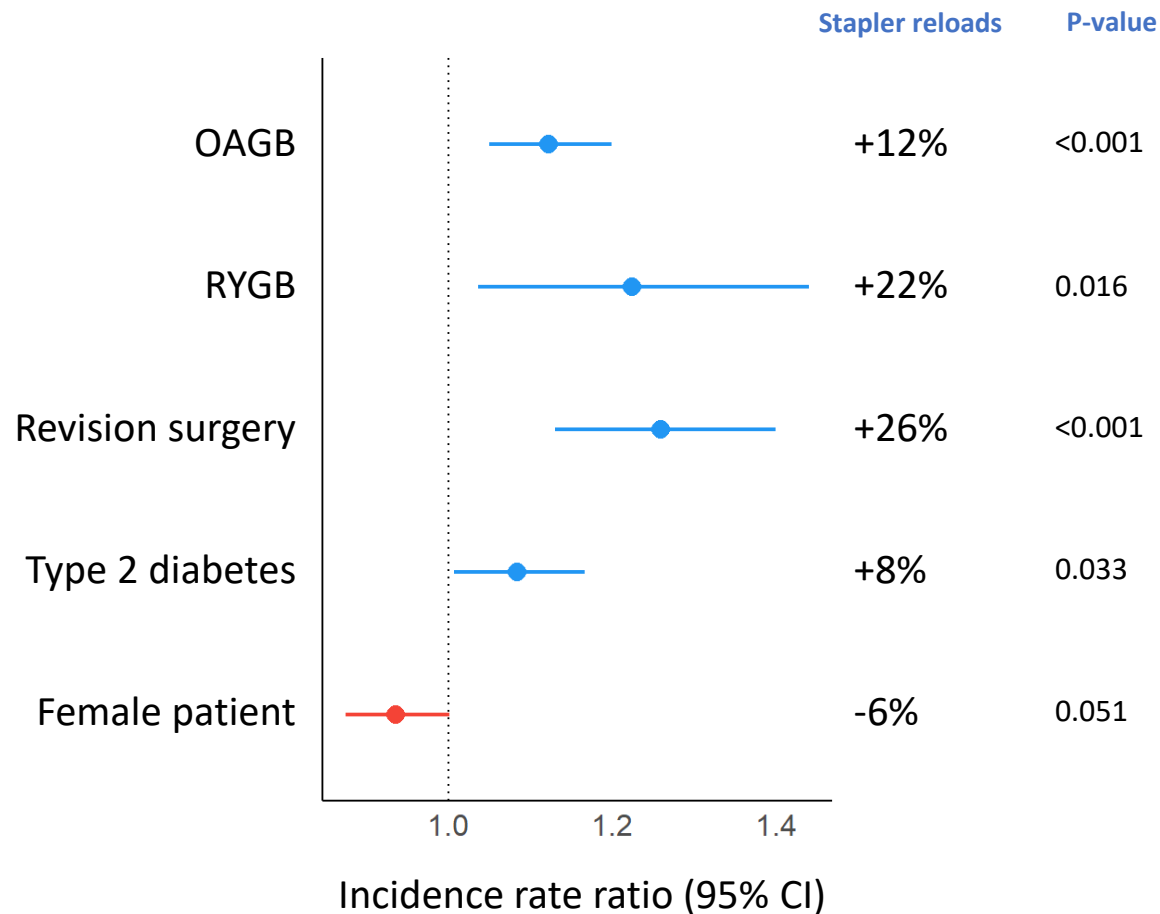
Study type: Retrospective analysis of prospectively collected patient data

Surgery type: Primary or revision MBS



Factors influencing stapler reloads used

Surgery type and patient comorbidity influence number of reloads needed



More stapler reloads needed for

- Gastric bypass (compared to sleeve gastrectomy)
- Revisions (compared to primary surgeries)
- People with type 2 diabetes

THANK YOU

In accordance with «EACCME criteria for the Accreditation of Live Educational Events», please disclose whether you have or not any conflict of interest with the companies:

If you don't have any conflict, please delete the conflict of interest report points:

I have no potential conflict of interest to report

I have the following potential conflict(s) of interest to report:

- Type of affiliation / financial interest:
- Receipt of grants/research supports:
- Receipt of honoraria or consultation fees:
- Participation in a company sponsored speaker's bureau:
- Stock shareholder:
- Spouse/partner:
- Other support (please specify):