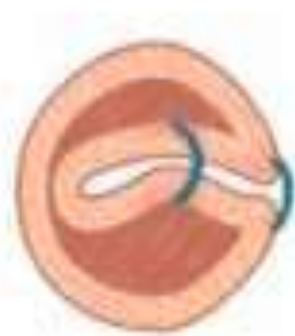
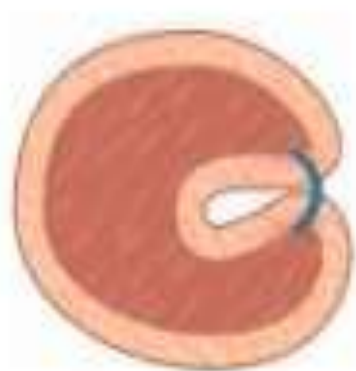
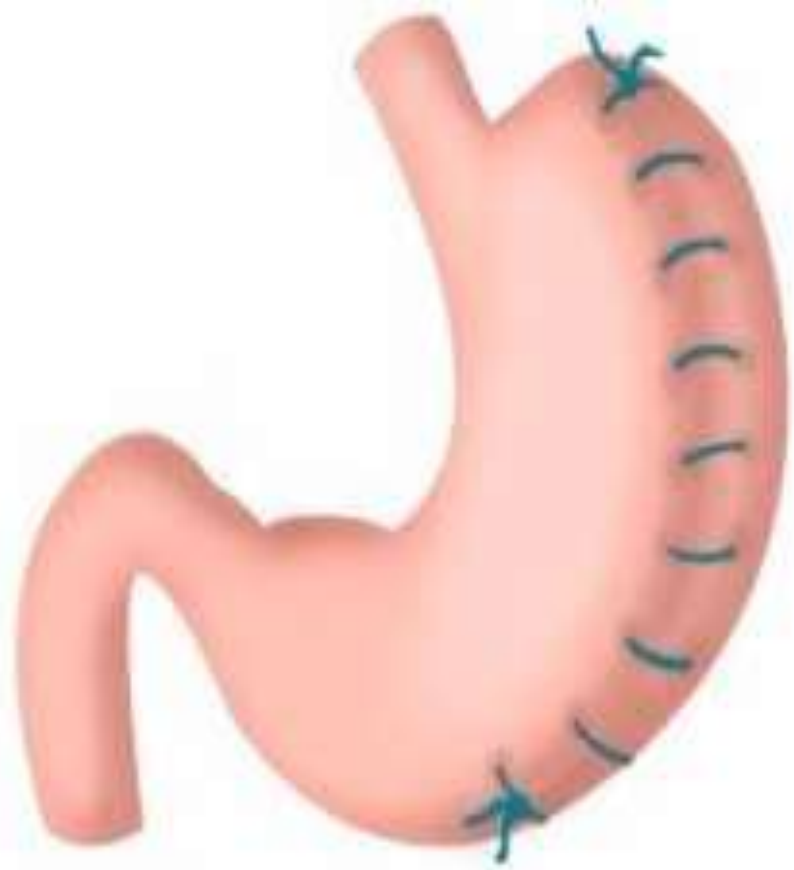




**CONVERSION OF LAPAROSCOPIC GASTRIC PPLICATION TO ONE ANASTOMOSIS GASTRIC BYPASS.
DR MOHAMAD HAMOUD, DR NASSER SAKRAN,
DEPARTMENT OF SURGERY, HOLY FAMILY HOSPITAL, NAZARETH**

GASTRIC GREATER CURVATURE PPLICATION FOR WEIGHT LOSS IS A RESTRICTIVE MINIMALLY INVASIVE PROCEDURE THAT FOLDS THE STOMACH IN ON ITSELF TO CREATE A SMALLER POUCH WITHOUT REMOVAL OF TISSUE, AND DOES NOT HAVE A SIGNIFICANT MALABSORPTIVE COMPONENT







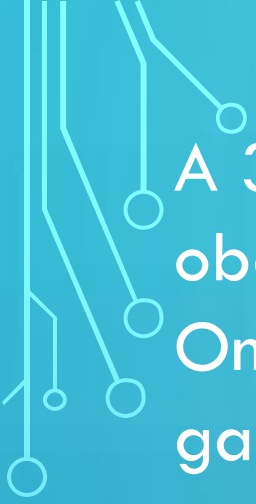
Many of these operations will eventually fail to maintain the weight loss achieved in the first 2 years following plication.





There are a number of reasons why someone might need to have their gastric plication converted to a gastric bypass. These reasons include:

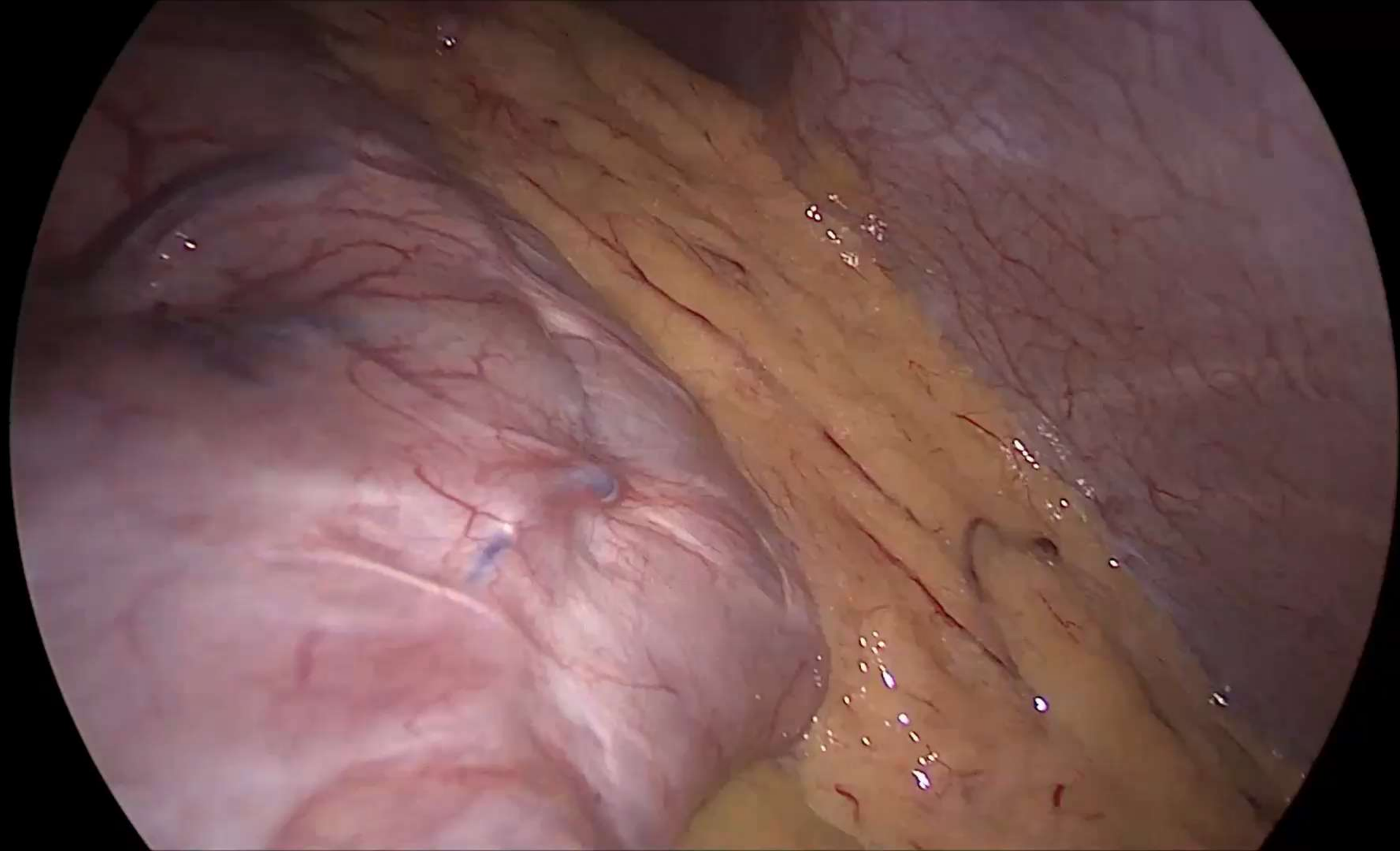
- 1-Inadequate weight loss: Some patients do not lose enough weight after gastric plication.
 - 2-Recurrence of obesity: Obesity can recur after gastric plication.
 - 3-GERD
- 
- 



A 31-year-old female patient underwent gastric plication for morbid obesity, two years ago at another institution.

One year after surgery, she started to regain weight, and suffered from gastroesophageal reflux disease (GERD) symptoms





The background is a solid teal color. In the four corners, there are decorative white line-art patterns resembling circuit traces or neural network connections. These patterns consist of straight lines of varying lengths and angles, ending in small white circles. The patterns are most prominent in the top-left and bottom-left corners, and less so in the top-right and bottom-right corners.

Conclusion: The one anastomosis gastric bypass is the safety and the reliable surgery desired to convert the failed laparoscopic gastric plication.