



International Multicenter Study Of 2 Step SADI As A Rescue For Sleeve Gastrectomy

Amador García Ruiz de Gordejuela

BARIATRIC AND ESOPHAGOGASTRIC SURGERY UNIT

HOSPITAL UNIVERSITARIO DONOSTIA

UNIVERSIDAD DEL PAÍS VASCO / EUSKAL HERRIKO UNIBERTSITATEA



Euskadi, auzolana, bien común



OSASUN SAILA

DEPARTAMENTO DE SALUD

Disclosures

- Authors declare nothing to disclose

SADI-S as Revisional Surgery

- 2nd step in staged procedures for high risk patients
- Rescue for weight recurrence after SG

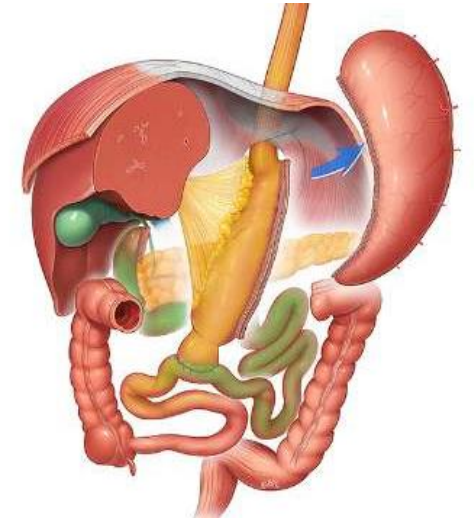
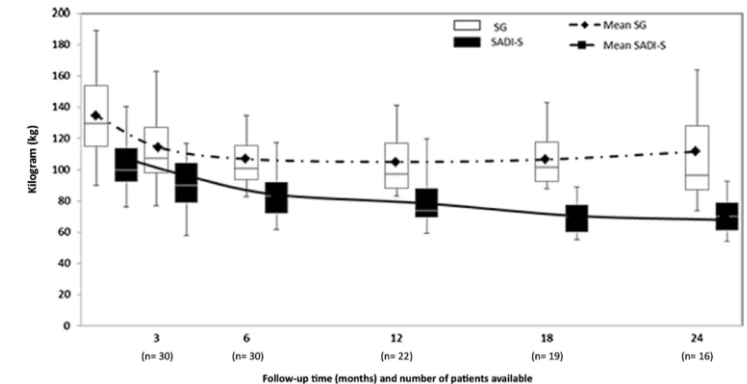


Table 1 Postoperative ponderal evolution

	12 months after SG (n = 30)	Reoperation (n = 30)	6 months after SADI (n = 30; 100%)	12 months after SADI (n = 22; 73.34%)	24 months after SADI (n = 16; 53.34%)
Total weight loss(kg)	28.2 (7.94)	28.06 (8.45)	45.31 (10.74)	49.72 (16.72)	53.16 (12.3)
% Total weight loss	23.12 (6.83)	21.16 (7.42)	36.1 (12.2)	41.15 (11.7)	46.26 (13.2)
Global %EWL	39.62 (14.02)	37.25 (18.02)	63.57 (17.11)	73.1 (22.45)	78.93 (35.50)
%EWL after SADI	N/A	N/A	45.49 (20.94)	60.87 (23.85)	44.25 (34.97)
BMI (kg/m ²)	N/A	N/A	33.20 (4.98)	31.46 (7.12)	28.64 (5.58)
%EBMIL	43.05 (23.78)	N/A	28.37 (15.88)	36.16 (18.54)	49.72 (19.90)

^a Results are expressed as mean ± SD



Balibrea et al. Obes Surg 2017

Design

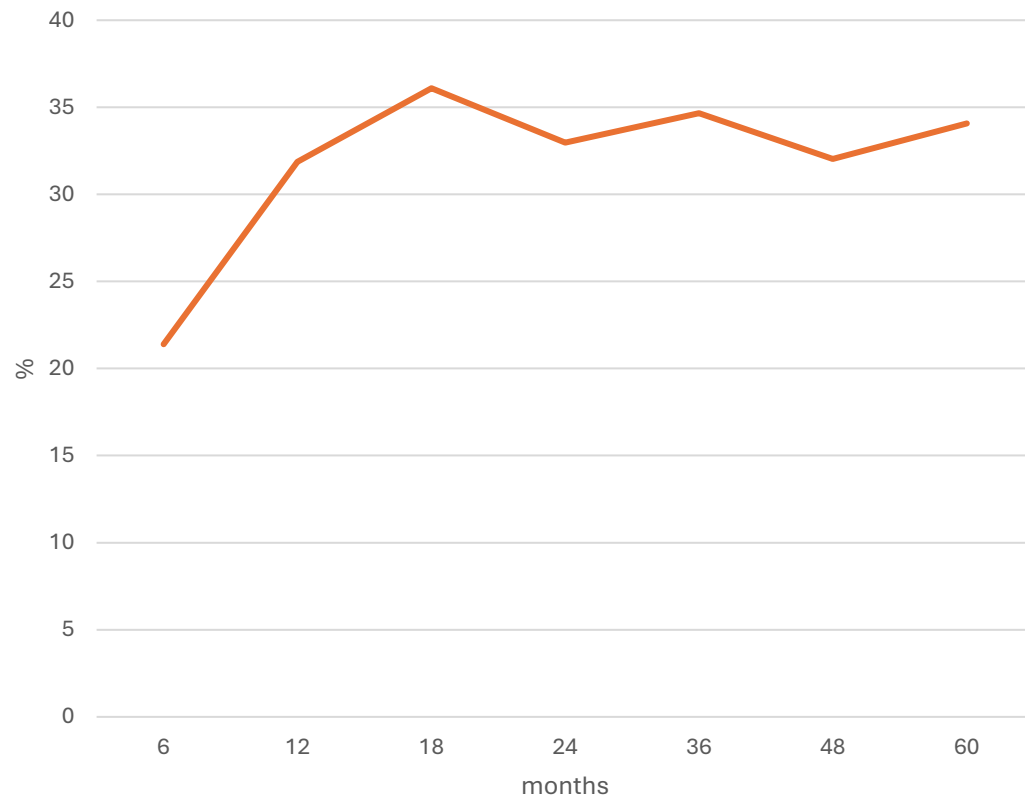
- Multicentric Retrospective Study
 - Spain
 - H.U. Bellvitge. Dr. Javier Osorio → 57 cases
 - H.U. Clínico San Carlos. Dr. Sánchez Pernaute → 51 cases
 - C.H.U. Santiago de Compostela. Dr. Javier Baltar → 8 cases
 - Portugal
 - C.H. entre Vougo e Doura. Dr. Mario Nora → 14 cases
 - USA
 - Orlando Health. Dr. Andre Teixeira → 11 cases
- Weight loss variables

Results

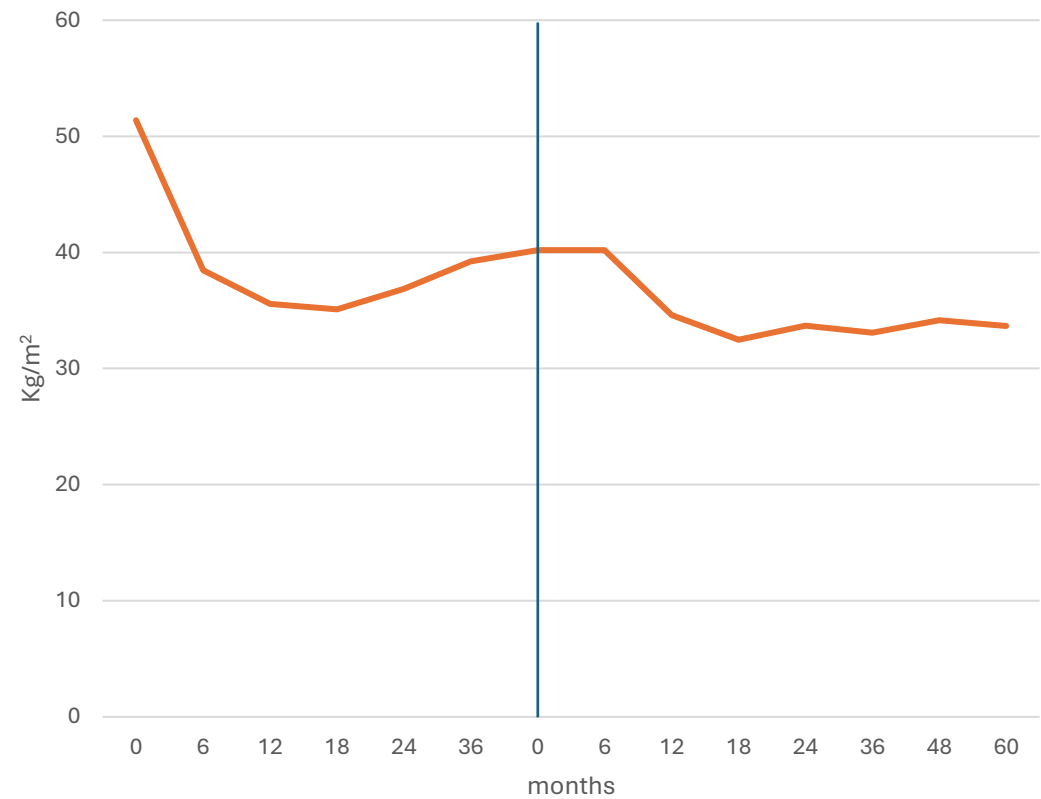
- 141 patients
 - 65.6% women
- 42.28 years old at the time of SG (18-63)
- Time Interval between SG and SADI-S → 39.11 months (3-111)
- Indications
 - 121 rescues for WL recurrences (85.8%)
- Limb lengths at SADI-S
 - 79 cases → 300cm
 - 62 cases → 250cm

Results – Overall Weight Loss

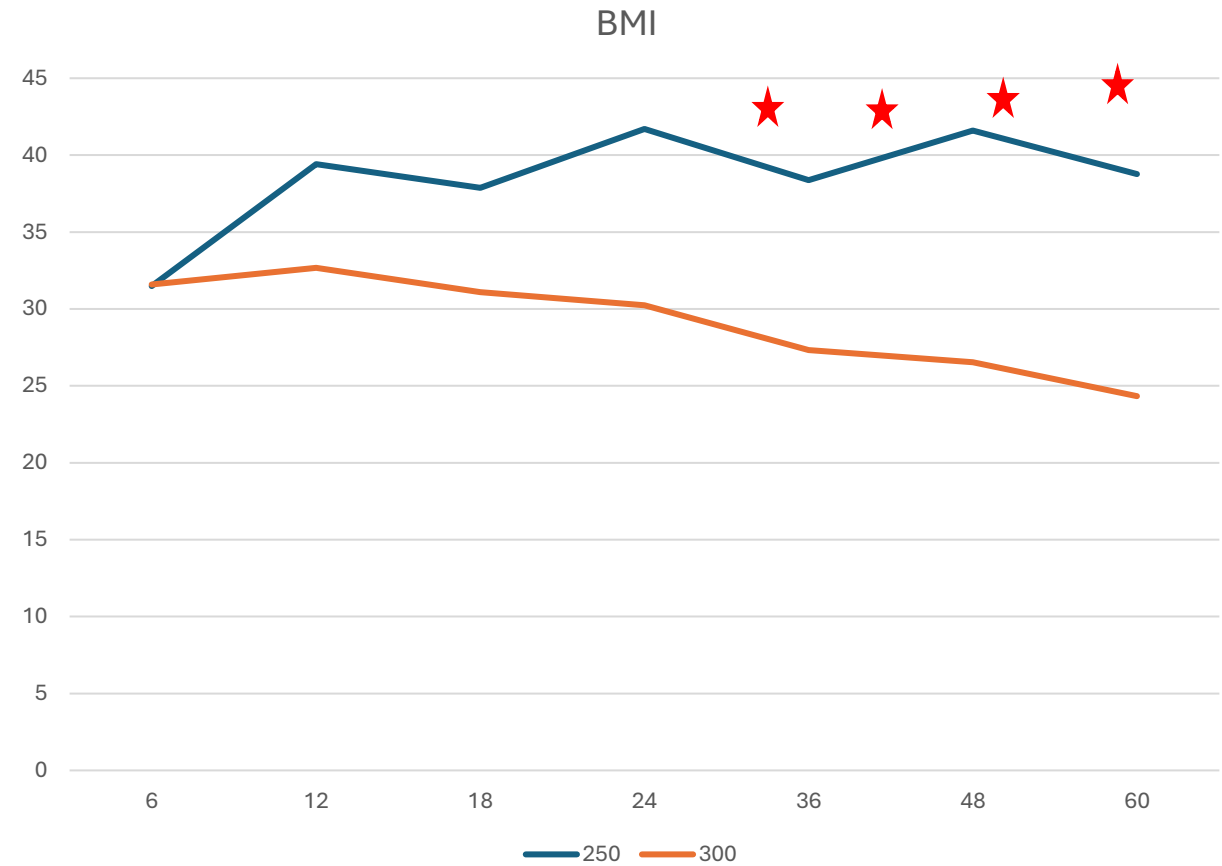
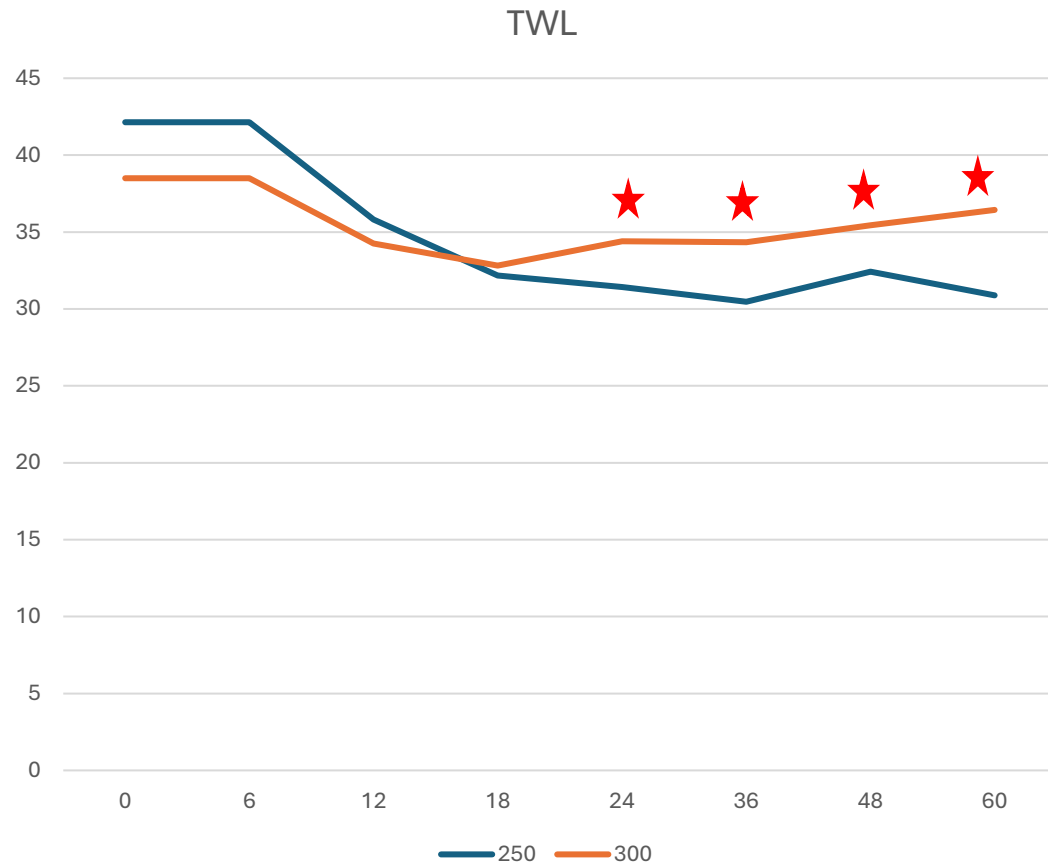
TWL after SADI-S



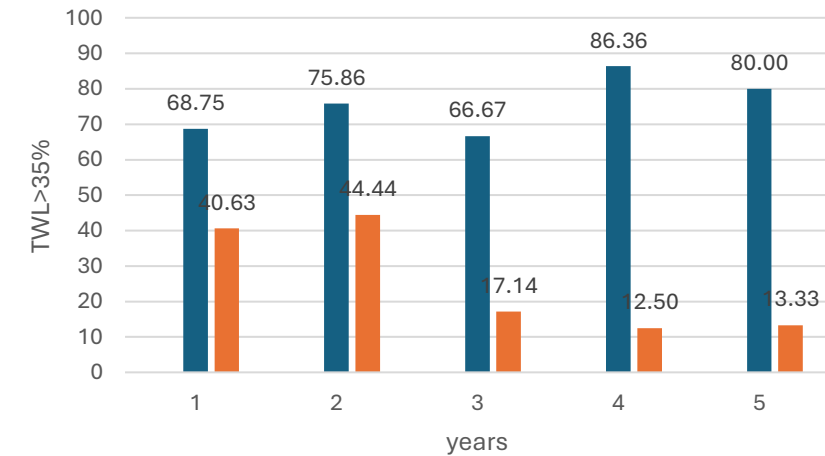
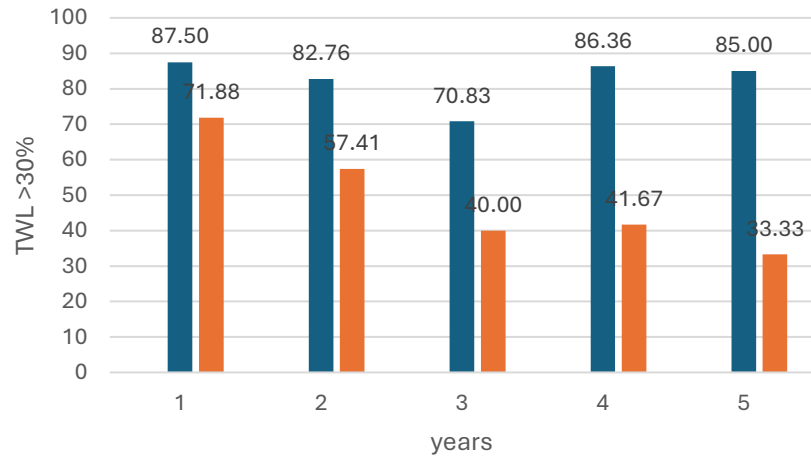
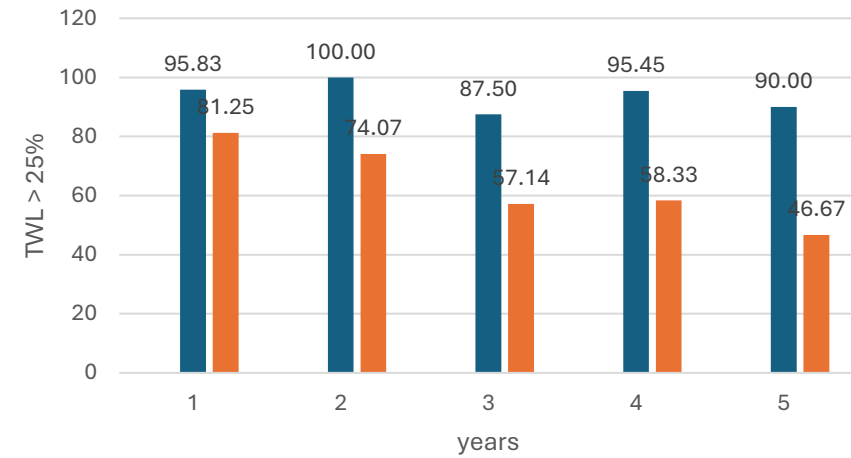
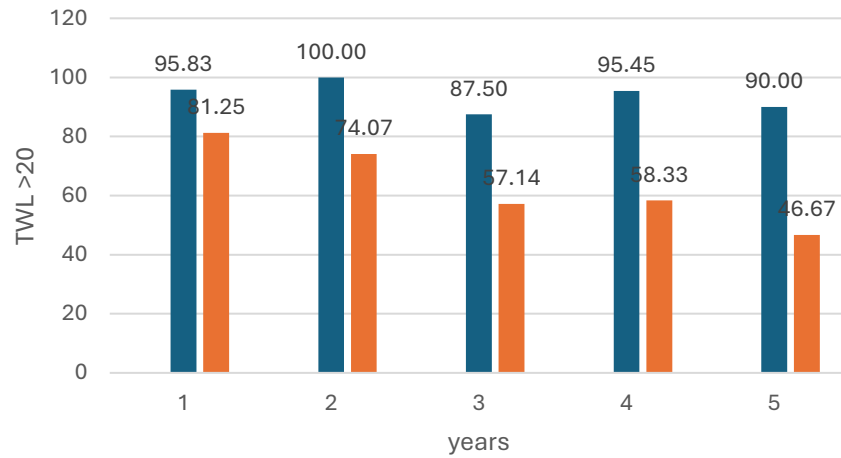
Overall BMI evolution



Results – WL depending on limb lengths

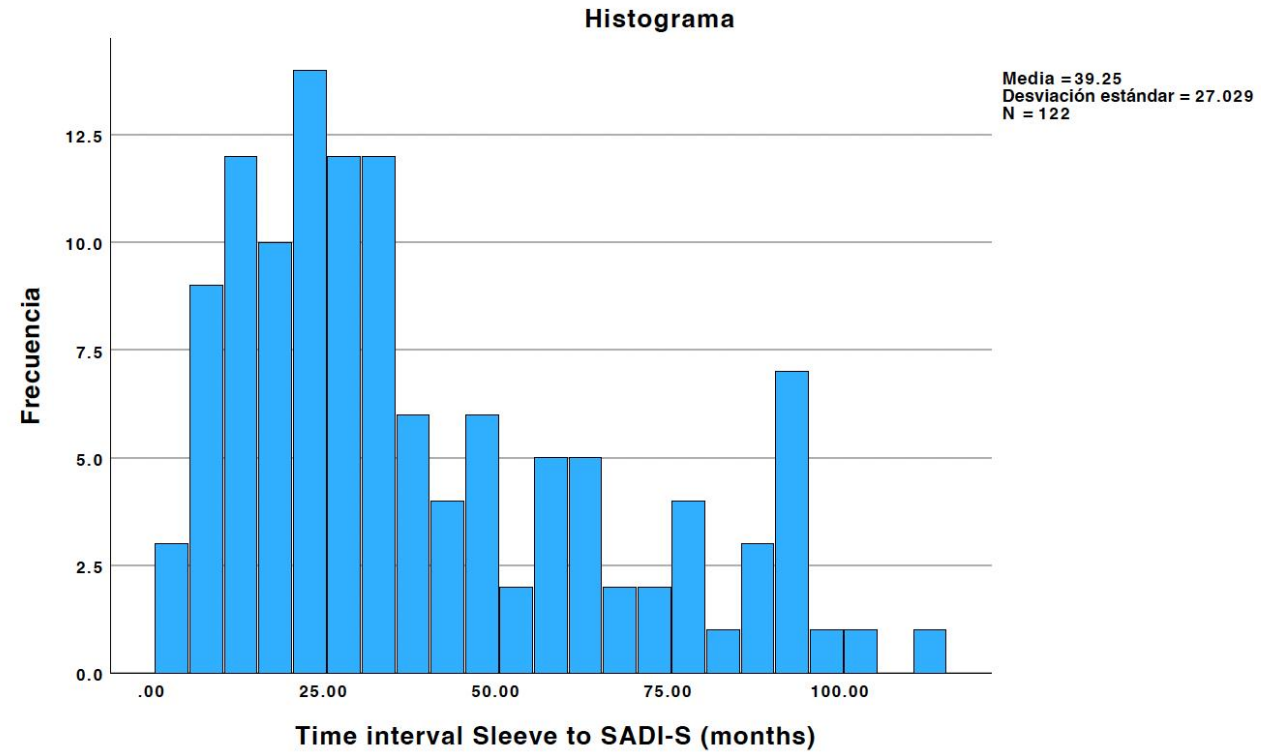


Results – WL depending on limb lengths

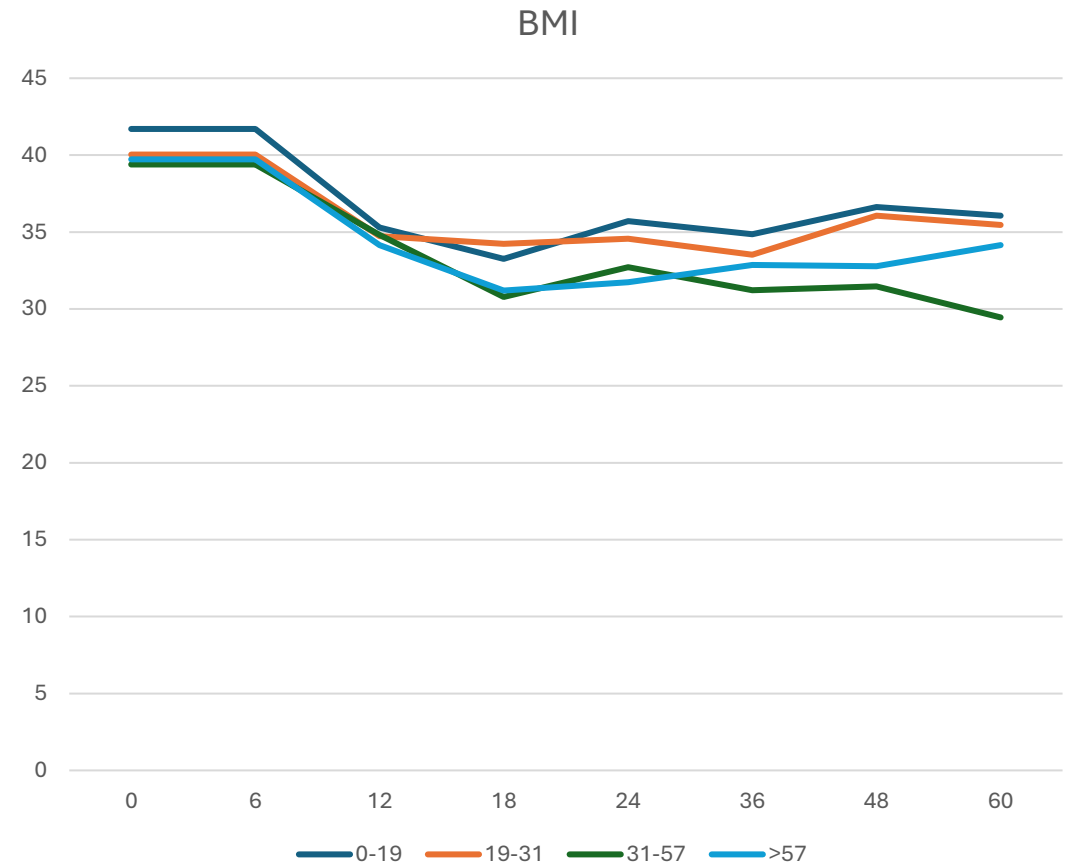
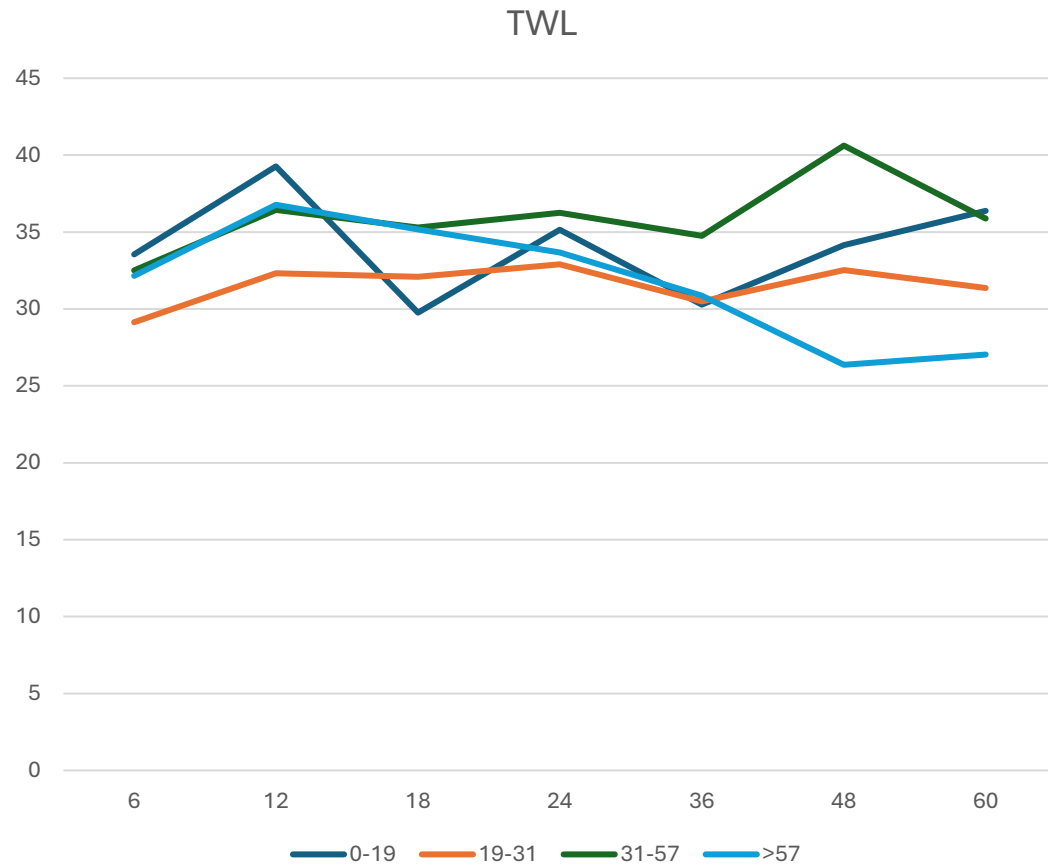


Limb Length ■ 250 ■ 300

Results – Time Interval

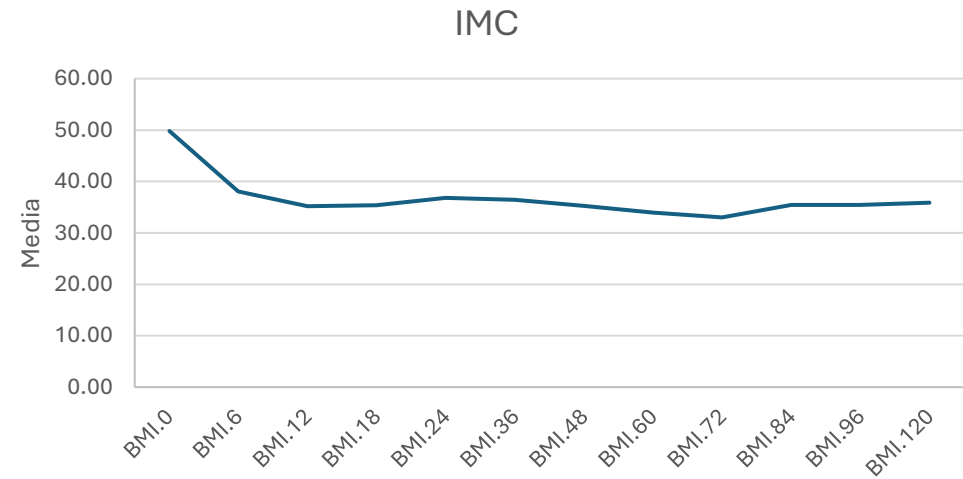
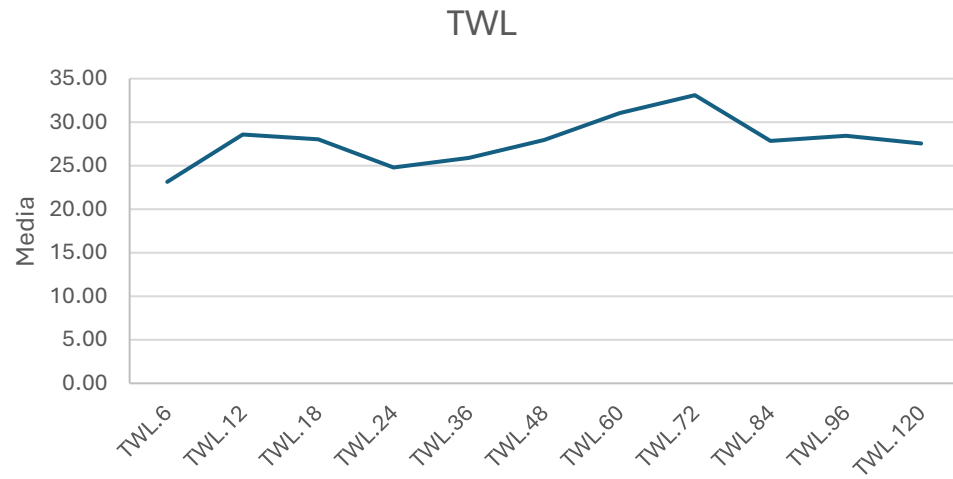


Results – WL depending on Time Intervals



Patients grouped by Quartiles

Results – Long-term Weight Loss



Conclusions

- SADI-S as a rescue for SG achieves acceptable weight loss outcomes
- Time Interval between surgeries does not seem to influence in weight loss
- Limb lengths have true impact in long-term results
- In an overall view, final BMI after 2nd stage SADI-S seems to behave as a primary procedure