

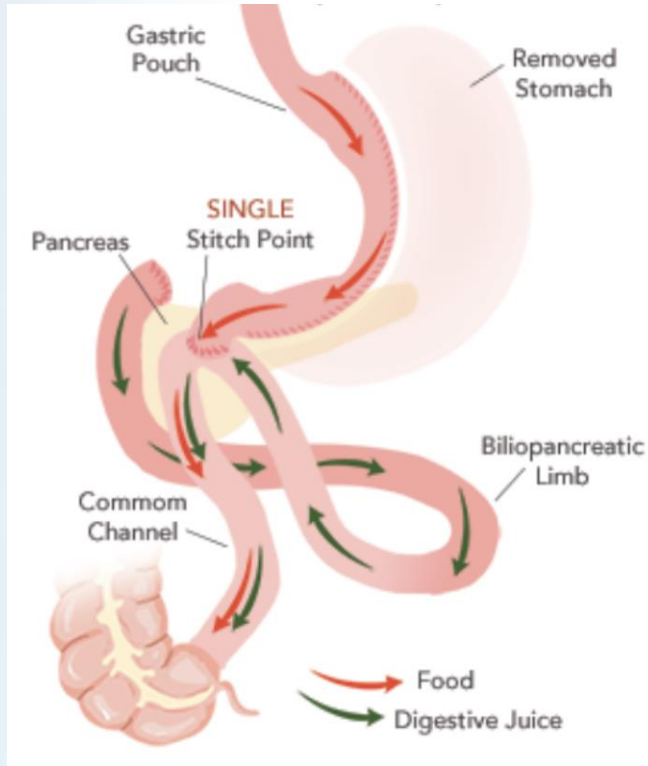


REVISIONAL SURGERY FOR MALNUTRITION FOLLOWING SADI-S: LAPAROSCOPIC COMMON CHANNEL ELONGATION AS A SECURE TREATMENT OPTION— A CASE SERIES STUDY

Aghiles Abbad MD ¹, Ahmed Amine Alaoui ¹, Amir Sleiman MD ¹, Pierre Yves Garneau MD ¹,
Anne-Sophie Studer MD ¹, Adam Di Palma MD ¹, Ronald Denis MD ¹, Henri Atlas MD ¹,
Radu Pescarus MD ¹.

¹*Bariatric Surgery Service, Sacré-Coeur Hospital, University of Montreal, Montreal, Quebec,
Canada*

Background



- **SADI-S** : **S**ingle **A**nastomosis **D**uodeno-**I**leal Bypass with **S**leeve Gastrectomy
- Optimal common channel **250-300 cm**
- **Malnutrition** up to 1.6 %¹
Chronic diarrhea up to 5.6 %¹
- No consensus on optimal revisional surgery for malnutrition/chronic diarrhea

Pearcy, C., Teixeira, A., Ghanem, M., Zundel, N. (2023). Bariatric Surgery Complications and Management. In: Nguyen, N.T., et al. The AFS Textbook of Foregut Disease. Springer, Cham. https://doi.org/10.1007/978-3-031-19671-3_58

¹ Horsley, Obesity Surgery (2019)

Share insights from our institutional experience in managing malabsorption post SADI-S **following failure of conservative treatment** through a detailed analysis of **revisional surgery cases**.

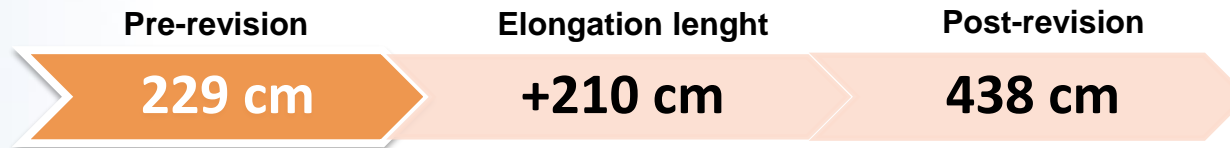
Retrospective study from 2017 to 2024.

Eight (8) patients in total with elongation of the common channel (ECC)

- Seven (7) patients = ECC of 100 to 350 cm
- One (1) patient = complete reversal with duodeno-duodenostomy

Results

LENGTH OF THE COMMON CHANNEL (AVERAGE OF ALL PATIENTS)



MALABSORPTIVE PARAMETERS OBSERVED (AVERAGE OF ALL PATIENTS)

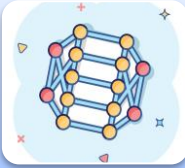
| Parameters | Pre-operative | Post-operative |
|------------------------------|------------------------|--------------------------|
| Albumin levels | 25.0 g/L | 38.8 g/L ↑ |
| Total protein levels | 51.9 g/L | 61.7 g/L ↑ |
| Daily liquid bowel movements | 10.9 | 0.3 ↓ |
| BMI | 27.9 kg/m ² | 31.9 kg/m ² ↑ |

Results

- Mean post-operative stay = 1 day
- All surgeries performed **laparoscopically**
- No mortality
- Average time of follow up : 18.9 months
- Total weight regain post revisional surgery : **13.6%**

- Two major complications :
 - **Duodeno-jejunal anastomotic leak** that required percutaneous drainage in one patient
 - **DVT** in one patient

Conclusion



Nutritional Status

- Laparoscopic revision following SADI-S appears to be **safe** and leads to improvement in protein malnutrition



Malabsorption Symptoms

- Resolution of diarrhea in all patients



Weight Recidivism

- Average weight recidivism (4.0 kg/m^2) is to be expected



Length of Elongation of the Common Channel

- The optimal length of elongation of the CC remains to be determined