



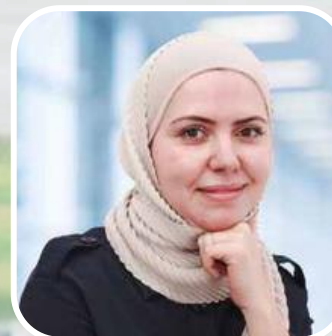
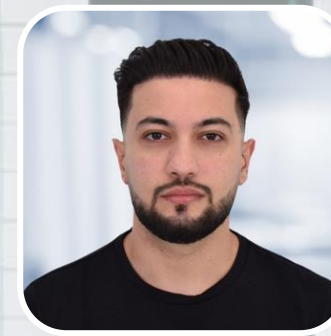
AL TAIE CENTER
FOR LAPAROSCOPIC & OBESITY SURGERY

AL TAIE CENTER
FOR LAPAROSCOPIC AND OBESITY SURGERY
DUBAI, ABU DHABI - UAE
DOHA-QATAR



SINCE 2003

OAGBP, RYGBP, or SADI for Failed Sleeve





AL TAIE CENTER
FOR LAPAROSCOPIC & OBESITY SURGERY

AL TAIE CENTER
FOR LAPAROSCOPIC AND OBESITY SURGERY
DUBAI, ABU DHABI - UAE
DOHA-QATAR



SINCE 2003

INTRODUCTION

Weight Regain post-sleeve Gastrectomy is a Major Concern to both the patient and the surgeon.

200 - OAGBP
200 - RYGBP
20 - SADI

BMI Range 35 - 52
Age Range 24 - 63

Execution criteria : only weight regain Sleeves without other complaints were included in this study



AL TAIE CENTER
FOR LAPAROSCOPIC & OBESITY SURGERY

AL TAIE CENTER
FOR LAPAROSCOPIC AND OBESITY SURGERY
DUBAI, ABU DHABI - UAE
DOHA-QATAR



SINCE 2003

METHOD

- OAGBP - 3 meter BPL
- RYGB - 2 Meter BPL + 1 meter Alimentary Limb
- SADI - at 2.5 meters from Ileo-Caecal Valve



AL TAIE CENTER
FOR LAPAROSCOPIC & OBESITY SURGERY

AL TAIE CENTER
FOR LAPAROSCOPIC AND OBESITY SURGERY
DUBAI, ABU DHABI - UAE
DOHA-QATAR



SINCE 2003

FINDINGS

Weight Loss :

More	OAGBP SADI	Least	RYGBP
------	-----------------------------	-------	--------------

Complications :

Least in	RYGBP	No mortalities
More in	OAGBP	
Most in	SADI	

- Malnutrition
- Diarrhea
- Excessive weight loss
- Reflux / GERD
- Multiple Stomal Ulcers
- Leg Swellings
- Neurological Symptoms
- Bleeding
- Dumping Syndrome



AL TAIE CENTER
FOR LAPAROSCOPIC & OBESITY SURGERY

AL TAIE CENTER
FOR LAPAROSCOPIC AND OBESITY SURGERY
DUBAI, ABU DHABI - UAE
DOHA-QATAR



SINCE 2003

CONCLUSION

The target of the study is to find out the most effective weight loss procedure for post-sleeve weight regain.

- OAGBP has Good weight with Acceptable complications
- SADI has Good weight loss with More Complications
- RYGBP has the Least weight loss with the Least complications

Which Procedure you will Choose ! ?